

C1INH (K-15): sc-46297

BACKGROUND

The serine proteinase inhibitors (serpins) comprise a superfamily of proteins with a diverse set of functions, including the control of complement activation, blood coagulation, programmed cell death and cell development. Serpins are secreted glycoproteins that contain a stretch of peptide that mimics a true substrate for a corresponding serine protease. The most abundant serpins in human plasma are α -1-antitrypsin (AAT) and α -1-antichymotrypsin (AACT). Other serpin family members include pigment epithelium-derived growth factor (PEDF), human protease nexin 1 (PN-1), protease inhibitor 6 (PI-6), thyroxine-binding globulin precursor (TBG), protease inhibitor 9 (PI-9), serine protease inhibitor 3 (Spi3), plasma protease C1 inhibitor (C1INH), Headpin, SerpinB12, monocyte/neutrophil elastase inhibitor members 1a,1b and 1c (M/NEI) and squamous cell carcinoma antigens 1 and 2 (SCCA1/2). Antithrombin-III (ATIII) is a crucial serine protease inhibitor that regulates the coagulation cascade in blood and inhibits Thrombin.

CHROMOSOMAL LOCATION

Genetic locus: SERPING1 (human) mapping to 11q12.1; Serping1 (mouse) mapping to 2 D.

SOURCE

C1INH (K-15) is an affinity purified goat polyclonal antibody raised against a peptide mapping within an internal region of C1INH of human origin.

PRODUCT

Each vial contains 200 μ g IgG in 1.0 ml of PBS with < 0.1% sodium azide and 0.1% gelatin.

Blocking peptide available for competition studies, sc-46297 P, (100 μ g peptide in 0.5 ml PBS containing < 0.1% sodium azide and 0.2% BSA).

STORAGE

Store at 4° C, ****DO NOT FREEZE****. Stable for one year from the date of shipment. Non-hazardous. No MSDS required.

APPLICATIONS

C1INH (K-15) is recommended for detection of C1INH of human and, to a lesser extent, mouse and rat origin by Western Blotting (starting dilution 1:200, dilution range 1:100-1:1000), immunoprecipitation [1-2 μ g per 100-500 μ g of total protein (1 ml of cell lysate)], immunofluorescence (starting dilution 1:50, dilution range 1:50-1:500) and solid phase ELISA (starting dilution 1:30, dilution range 1:30-1:3000).

Suitable for use as control antibody for C1INH siRNA (h): sc-45608, C1INH siRNA (m): sc-45609, C1INH shRNA Plasmid (h): sc-45608-SH, C1INH shRNA Plasmid (m): sc-45609-SH, C1INH shRNA (h) Lentiviral Particles: sc-45608-V and C1INH shRNA (m) Lentiviral Particles: sc-45609-V.

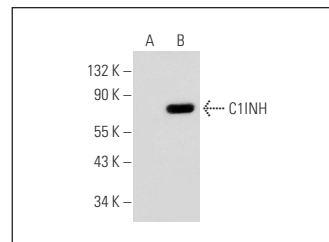
Molecular Weight of C1INH: 55 kDa.

Molecular Weight of glycosylated C1INH: 75-105 kDa.

RECOMMENDED SECONDARY REAGENTS

To ensure optimal results, the following support (secondary) reagents are recommended: 1) Western Blotting: use donkey anti-goat IgG-HRP: sc-2020 (dilution range: 1:2000-1:100,000) or Cruz Marker™ compatible donkey anti-goat IgG-HRP: sc-2033 (dilution range: 1:2000-1:5000), Cruz Marker™ Molecular Weight Standards: sc-2035, TBS Blotto A Blocking Reagent: sc-2333 and Western Blotting Luminol Reagent: sc-2048. 2) Immunoprecipitation: use Protein A/G PLUS-Agarose: sc-2003 (0.5 ml agarose/2.0 ml). 3) Immunofluorescence: use donkey anti-goat IgG-FITC: sc-2024 (dilution range: 1:100-1:400) or donkey anti-goat IgG-TR: sc-2783 (dilution range: 1:100-1:400) with UltraCruz™ Mounting Medium: sc-24941.

DATA



C1INH (K-15): sc-46297. Western blot analysis of C1INH expression in non-transfected: sc-117752 (A) and mouse C1INH transfected: sc-126534 (B) 293T whole cell lysates.

RESEARCH USE

For research use only, not for use in diagnostic procedures.

PROTOCOLS

See our web site at www.scbt.com or our catalog for detailed protocols and support products.

MONOS
Satisfaction
Guaranteed

Try **C1INH (B-11): sc-377062**, our highly recommended monoclonal alternative to C1INH (K-15).