

# cadherin-16 (N-13): sc-46303

## BACKGROUND

The cadherins are a family of  $\text{Ca}^{2+}$ -dependent adhesion molecules that function to mediate cell-cell binding critical to the maintenance of structure and morphogenesis. Cadherins each contain a large extracellular domain at the N-terminus, which is characterized by a series of five homologous repeats, the most distal of which is thought to be responsible for binding specificity. Cadherin-16, also known as Ksp-cadherin, is a type I membrane protein which is kidney-specific. Cadherin-16 is expressed exclusively in the basolateral membrane of renal tubular epithelial cells. The human Ksp-cadherin gene (cadherin-16) maps to chromosome 16q21-proximal 16q22.1. The mouse Ksp-cadherin gene was localized to a highly syntenic region of distal chromosome 8.

## CHROMOSOMAL LOCATION

Genetic locus: CDH16 (human) mapping to 16q22.1; Cdh16 (mouse) mapping to 8 D3.

## SOURCE

cadherin-16 (N-13) is an affinity purified goat polyclonal antibody raised against a peptide mapping near the N-terminus of cadherin-16 of mouse origin.

## PRODUCT

Each vial contains 200  $\mu\text{g}$  IgG in 1.0 ml of PBS with < 0.1% sodium azide and 0.1% gelatin.

Blocking peptide available for competition studies, sc-46303 P, (100  $\mu\text{g}$  peptide in 0.5 ml PBS containing < 0.1% sodium azide and 0.2% BSA).

## STORAGE

Store at 4° C, **\*\*DO NOT FREEZE\*\***. Stable for one year from the date of shipment. Non-hazardous. No MSDS required.

## APPLICATIONS

cadherin-16 (N-13) is recommended for detection of cadherin-16 of mouse, rat and human origin by Western Blotting (starting dilution 1:200, dilution range 1:100-1:1000), immunofluorescence (starting dilution 1:50, dilution range 1:50-1:500), immunohistochemistry (including paraffin-embedded sections) (starting dilution 1:50, dilution range 1:50-1:500) and solid phase ELISA (starting dilution 1:30, dilution range 1:30-1:3000).

Suitable for use as control antibody for cadherin-16 siRNA (h): sc-45610, cadherin-16 siRNA (m): sc-45611, cadherin-16 shRNA Plasmid (h): sc-45610-SH, cadherin-16 shRNA Plasmid (m): sc-45611-SH, cadherin-16 shRNA (h) Lentiviral Particles: sc-45610-V and cadherin-16 shRNA (m) Lentiviral Particles: sc-45611-V.

Molecular Weight (predicted) of cadherin-16: 90 kDa.

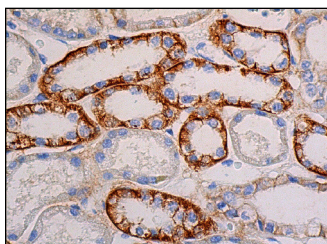
Molecular Weight (observed) of cadherin-16: 84-131 kDa.

Positive Controls: Caki-1 cell lysate: sc-2224.

## RECOMMENDED SECONDARY REAGENTS

To ensure optimal results, the following support (secondary) reagents are recommended: 1) Western Blotting: use donkey anti-goat IgG-HRP: sc-2020 (dilution range: 1:2000-1:100,000) or Cruz Marker™ compatible donkey anti-goat IgG-HRP: sc-2033 (dilution range: 1:2000-1:5000), Cruz Marker™ Molecular Weight Standards: sc-2035, TBS Blotto A Blocking Reagent: sc-2333 and Western Blotting Luminol Reagent: sc-2048. 2) Immunofluorescence: use donkey anti-goat IgG-FITC: sc-2024 (dilution range: 1:100-1:400) or donkey anti-goat IgG-TR: sc-2783 (dilution range: 1:100-1:400) with UltraCruz™ Mounting Medium: sc-24941. 3) Immunohistochemistry: use ImmunoCruz™: sc-2053 or ABC: sc-2023 goat IgG Staining Systems.

## DATA



cadherin-16 (N-13): sc-46303. Immunoperoxidase staining of formalin fixed, paraffin-embedded human kidney tissue showing membrane and cytoplasmic staining of cells in tubules.

## RESEARCH USE

For research use only, not for use in diagnostic procedures.

## PROTOCOLS

See our web site at [www.scbt.com](http://www.scbt.com) or our catalog for detailed protocols and support products.

**MONOS**  
Satisfaction  
Guaranteed

Try **cadherin-16 (E-7): sc-393153** or **cadherin-16 (H-10): sc-393132**, our highly recommended monoclonal alternatives to cadherin-16 (N-13).