

GPT2 (D-15): sc-46351

BACKGROUND

The glutamate pyruvate transaminases GPT (or GPT1) and GPT2, also designated alanine aminotransferases (ALT1 and ALT2) respectively, catalyze the reversible transamination between alanine and 2-oxoglutarate to form pyruvate and glutamate. Subsequently, they play a key role in the intermediary metabolism of glucose and amino acids. GPT and GPT2 share significant sequence homology, but differ in their expression patterns. GPT exhibits high expression in kidney, liver and heart, whereas GPT2 expression is high in muscle, fat and kidney. GPT is widely used as an index of liver integrity or hepatocellular damage in clinical settings. The genes encoding human GPT map to chromosome 8q24.3; the gene encoding human GPT2 maps to chromosome 16q12.1.

CHROMOSOMAL LOCATION

Genetic locus: GPT2 (human) mapping to 16q12.1; Gpt2 (mouse) mapping to 8 C3.

SOURCE

GPT2 (D-15) is an affinity purified goat polyclonal antibody raised against a peptide mapping near the C-terminus of GPT2 of human origin.

PRODUCT

Each vial contains 200 µg IgG in 1.0 ml of PBS with < 0.1% sodium azide and 0.1% gelatin.

Blocking peptide available for competition studies, sc-46351 P, (100 µg peptide in 0.5 ml PBS containing < 0.1% sodium azide and 0.2% BSA).

STORAGE

Store at 4° C, ****DO NOT FREEZE****. Stable for one year from the date of shipment. Non-hazardous. No MSDS required.

APPLICATIONS

GPT2 (D-15) is recommended for detection of GPT2 of mouse, rat and human origin by Western Blotting (starting dilution 1:200, dilution range 1:100-1:1000), immunoprecipitation [1-2 µg per 100-500 µg of total protein (1 ml of cell lysate)], immunofluorescence (starting dilution 1:50, dilution range 1:50-1:500) and solid phase ELISA (starting dilution 1:30, dilution range 1:30-1:3000).

GPT2 (D-15) is also recommended for detection of glutamic pyruvate transaminase 2 in additional species, including equine, canine, bovine and porcine.

Suitable for use as control antibody for GPT2 siRNA (h): sc-45647, GPT2 siRNA (m): sc-45648, GPT2 shRNA Plasmid (h): sc-45647-SH, GPT2 shRNA Plasmid (m): sc-45648-SH, GPT2 shRNA (h) Lentiviral Particles: sc-45647-V and GPT2 shRNA (m) Lentiviral Particles: sc-45648-V.

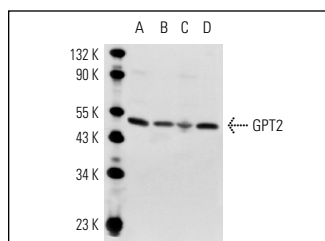
Molecular Weight of GPT2: 47 kDa.

Positive Controls: 3T3-L1 cell lysate: sc-2243, NIH/3T3 whole cell lysate: sc-2210 or Hep G2 cell lysate: sc-2227.

RECOMMENDED SECONDARY REAGENTS

To ensure optimal results, the following support (secondary) reagents are recommended: 1) Western Blotting: use donkey anti-goat IgG-HRP: sc-2020 (dilution range: 1:2000-1:100,000) or Cruz Marker™ compatible donkey anti-goat IgG-HRP: sc-2033 (dilution range: 1:2000-1:5000), Cruz Marker™ Molecular Weight Standards: sc-2035, TBS Blotto A Blocking Reagent: sc-2333 and Western Blotting Luminol Reagent: sc-2048. 2) Immunoprecipitation: use Protein A/G PLUS-Agarose: sc-2003 (0.5 ml agarose/2.0 ml). 3) Immunofluorescence: use donkey anti-goat IgG-FITC: sc-2024 (dilution range: 1:100-1:400) or donkey anti-goat IgG-TR: sc-2783 (dilution range: 1:100-1:400) with UltraCruz™ Mounting Medium: sc-24941.

DATA



GPT2 (D-15): sc-46351. Western blot analysis of GPT2 expression in 3T3-L1 (A), NIH/3T3 (B), Hep G2 (C) and KNRK (D) whole cell lysates.

RESEARCH USE

For research use only, not for use in diagnostic procedures.

PROTOCOLS

See our web site at www.scbt.com or our catalog for detailed protocols and support products.


 MONOS
Satisfaction
Guaranteed

Try **GPT2 (G-7): sc-398383**, our highly recommended monoclonal alternative to GPT2 (D-15).