

KChIP4 (L-14): sc-46380

BACKGROUND

The downstream regulatory element, DRE, acts as a location-dependent gene silencer. DREAM (for DRE-antagonist modulator) is a Ca^{2+} -regulated transcriptional repressor that specifically binds to the DRE. DREAM regulates transcription of prodynorphin and c-Fos genes and shows 99% nucleotide homology to the Kv channel-interacting proteins (KChIPs). KChIP family members include KChIP1, which is expressed in brain, KChIP2, which is expressed in heart, brain and lung, KChIP3 (also designated calsenilin), which is expressed in brain and testis and KChIP4.

REFERENCES

1. Xiong, H., et al. 2004. Differential distribution of KChIPs mRNAs in adult mouse brain. *Brain Res. Mol. Brain Res.* 128: 103-111.
2. Link, W.A., et al. 2004. Day-night changes in downstream regulatory element antagonist modulator/potassium channel interacting protein activity contribute to circadian gene expression in pineal gland. *J. Neurosci.* 24: 5346-5355.
3. Rhodes, K.J., et al. 2004. KChIPs and Kv4 α subunits as integral components of A-type potassium channels in mammalian brain. *J. Neurosci.* 24: 7903-7915.
4. Baranauskas, G. 2004. Cell-type-specific splicing of KChIP4 mRNA correlates with slower kinetics of A-type current. *Eur. J. Neurosci.* 20: 385-391.
5. Lin, Y.L., et al. 2004. Evidence showing an intermolecular interaction between KChIP proteins and Taiwan cobra cardiotoxins. *Biochem. Biophys. Res. Commun.* 319: 720-724.
6. Zhou, W., et al. 2004. Structural insights into the functional interaction of KChIP1 with Shal-type K⁺ channels. *Neuron* 41: 573-586.

CHROMOSOMAL LOCATION

Genetic locus: KCNIP4 (human) mapping to 4p15.31; Kcnip4 (mouse) mapping to 5 B3.

SOURCE

KChIP4 (L-14) is an affinity purified goat polyclonal antibody raised against a peptide mapping within an internal region of KChIP4 of human origin.

PRODUCT

Each vial contains 200 μ g IgG in 1.0 ml of PBS with < 0.1% sodium azide and 0.1% gelatin.

Blocking peptide available for competition studies, sc-46380 P, (100 μ g peptide in 0.5 ml PBS containing < 0.1% sodium azide and 0.2% BSA).

STORAGE

Store at 4° C, **DO NOT FREEZE**. Stable for one year from the date of shipment. Non-hazardous. No MSDS required.

RESEARCH USE

For research use only, not for use in diagnostic procedures.

APPLICATIONS

KChIP4 (L-14) is recommended for detection of KChIP4 of mouse, rat and human origin by Western Blotting (starting dilution 1:200, dilution range 1:100-1:1000), immunoprecipitation [1-2 μ g per 100-500 μ g of total protein (1 ml of cell lysate)], immunofluorescence (starting dilution 1:50, dilution range 1:50-1:500) and solid phase ELISA (starting dilution 1:30, dilution range 1:30-1:3000).

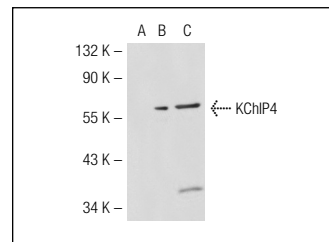
KChIP4 (L-14) is also recommended for detection of KChIP4 in additional species, including equine, canine, bovine, porcine and avian.

Suitable for use as control antibody for KChIP4 siRNA (h): sc-45837, KChIP4 siRNA (m): sc-45838, KChIP4 shRNA Plasmid (h): sc-45837-SH, KChIP4 shRNA Plasmid (m): sc-45838-SH, KChIP4 shRNA (h) Lentiviral Particles: sc-45837-V and KChIP4 shRNA (m) Lentiviral Particles: sc-45838-V.

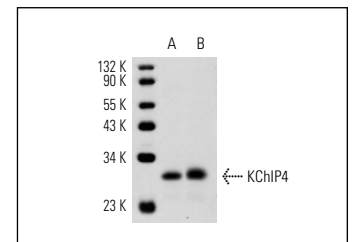
Molecular Weight of KChIP4: 29 kDa.

Positive Controls: KChIP4 (h): 293T Lysate: sc-115282, mouse brain extract: sc-2253 or rat brain extract: sc-2392.

DATA



KChIP4 (L-14): sc-46380. Western blot analysis of KChIP4 expression in non-transfected 293T: sc-117752 (A), human KChIP4 transfected 293T: sc-115282 (B) and SK-N-MC (C) whole cell lysates.



KChIP4 (L-14): sc-46380. Western blot analysis of KChIP4 expression in rat brain (A) and mouse brain (B) tissue extracts.

PROTOCOLS

See our web site at www.scbt.com or our catalog for detailed protocols and support products.



Try **KChIP4 (H-1): sc-373732**, our highly recommended monoclonal alternative to KChIP4 (L-14).