

# Met (N-17): sc-46395

## BACKGROUND

The c-Met oncogene was originally isolated from a chemical carcinogen-treated human osteogenic sarcoma cell line by transfection analysis in NIH/3T3 cells. The Met proto-oncogene product was identified as a transmembrane receptor-like protein with tyrosine kinase activity that is expressed in many tissues. A high proportion of spontaneous NIH/3T3 transformants overexpress c-Met and by transfection analysis the c-Met proto-oncogene has been shown to exhibit transforming activity. Tyrosine phosphorylation of apparently normal Met protein has also been observed in certain human gastric carcinoma cell lines. Tyrosine phosphorylation enhances the receptor kinase activity, while serine phosphorylation of Met on residue 985 has an inhibitory effect. The c-Met gene product has been identified as the cell surface receptor for hepatocyte growth factor, a plasminogen-like protein thought to be a humoral mediator of liver regeneration.

## REFERENCES

1. Cooper, C.S., et al. 1984. Molecular cloning of a new transforming gene from a chemically transformed human cell line. *Nature* 311: 29-33.
2. Park, M., et al. 1986. Mechanism of Met oncogene activation. *Cell* 45: 895-904.
3. Cooper, C.S., et al. 1986. Amplification and overexpression of the Met gene in spontaneously transformed NIH/3T3 mouse fibroblasts. *EMBO J.* 5: 2623-2628.
4. Chan, A.M., et al. 1988. Characterization of the mouse Met proto-oncogene. *Oncogene* 2: 593-599.
5. Giordano, S., et al. 1988. p145, a protein with associated tyrosine kinase activity in a human gastric carcinoma cell line. *Mol. Cell. Biol.* 8: 3510-3517.

## CHROMOSOMAL LOCATION

Genetic locus: MET (human) mapping to 7q31.2; Met (mouse) mapping to 6 A2.

## SOURCE

Met (N-17) is an affinity purified goat polyclonal antibody raised against a peptide mapping within an N-terminal extracellular domain of Met of human origin.

## PRODUCT

Each vial contains 200 µg IgG in 1.0 ml of PBS with < 0.1% sodium azide and 0.1% gelatin.

Blocking peptide available for competition studies, sc-46395 P, (100 µg peptide in 0.5 ml PBS containing < 0.1% sodium azide and 0.2% BSA).

## STORAGE

Store at 4° C, **\*\*DO NOT FREEZE\*\***. Stable for one year from the date of shipment. Non-hazardous. No MSDS required.

## APPLICATIONS

Met (N-17) is recommended for detection of Met of mouse, rat and human origin by Western Blotting (starting dilution 1:200, dilution range 1:100-1:1000), immunoprecipitation [1-2 µg per 100-500 µg of total protein (1 ml of cell lysate)], immunofluorescence (starting dilution 1:50, dilution range 1:50-1:500), immunohistochemistry (including paraffin-embedded sections) (starting dilution 1:50, dilution range 1:50-1:500) and solid phase ELISA (starting dilution 1:30, dilution range 1:30-1:3000).

Met (N-17) is also recommended for detection of Met in additional species, including equine, canine and porcine.

Suitable for use as control antibody for Met siRNA (h): sc-29397, Met siRNA (m): sc-35924, Met shRNA Plasmid (h): sc-29397-SH, Met shRNA Plasmid (m): sc-35924-SH, Met shRNA (h) Lentiviral Particles: sc-29397-V and Met shRNA (m) Lentiviral Particles: sc-35924-V.

Molecular Weight of Met precursor: 170 kDa.

Molecular Weight of Met  $\alpha$  subunit: 50 kDa.

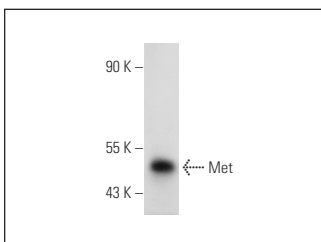
Molecular Weight of Met  $\beta$  subunit: 145 kDa.

Positive Controls: HEK293 whole cell lysate: sc-45136, A-431 whole cell lysate: sc-2201 or LADMAC whole cell lysate: sc-364189.

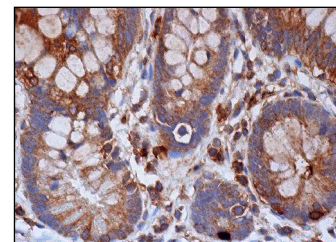
## RECOMMENDED SECONDARY REAGENTS

To ensure optimal results, the following support (secondary) reagents are recommended: 1) Western Blotting: use donkey anti-goat IgG-HRP: sc-2020 (dilution range: 1:2000-1:100,000) or Cruz Marker™ compatible donkey anti-goat IgG-HRP: sc-2033 (dilution range: 1:2000-1:5000), Cruz Marker™ Molecular Weight Standards: sc-2035, TBS Blotto A Blocking Reagent: sc-2333 and Western Blotting Luminol Reagent: sc-2048. 2) Immunoprecipitation: use Protein A/G PLUS-Agarose: sc-2003 (0.5 ml agarose/2.0 ml). 3) Immunofluorescence: use donkey anti-goat IgG-FITC: sc-2024 (dilution range: 1:100-1:400) or donkey anti-goat IgG-TR: sc-2783 (dilution range: 1:100-1:400) with UltraCruz™ Mounting Medium: sc-24941. 4) Immunohistochemistry: use ImmunoCruz™: sc-2053 or ABC: sc-2023 goat IgG Staining Systems.

## DATA



Met (N-17): sc-46395. Western blot analysis of Met expression in HEK293 whole cell lysate.



Met (N-17): sc-46395. Immunoperoxidase staining of formalin fixed, paraffin-embedded human small intestine tissue showing cytoplasmic staining of glandular cells.

## RESEARCH USE

For research use only, not for use in diagnostic procedures.