

RASSF2 (P-17): sc-46475

BACKGROUND

Ras is a small GTP-binding protein involved in many cellular processes, including proliferation, differentiation and apoptosis. Ras transmits signals of cell surface receptors by binding to a variety of effector molecules. In addition to the well-characterized effectors Raf and PI-3 kinase, Ras also interacts with a group of homologous, noncatalytic proteins composed of RASSF1, RASSF2, RASSF3, ADO37 and Nore1. RASSF1 is a potential tumor suppressor gene that plays an important role in tumor pathogenesis. Nore1 binds to Ras in response to EGF or serum stimulation, but its function has yet to be determined. RASSF2 is a nuclear protein containing a Ras-associating domain and a SARAH domain. RASSF2 isoform A is inactivated in colorectal cancer cells by CpG island promoter hypermethylation.

CHROMOSOMAL LOCATION

Genetic locus: RASSF2 (human) mapping to 20p13; Rassf2 (mouse) mapping to 2 F2.

SOURCE

RASSF2 (P-17) is an affinity purified goat polyclonal antibody raised against a peptide mapping within an internal region of RASSF2 of human origin.

PRODUCT

Each vial contains 200 µg IgG in 1.0 ml of PBS with < 0.1% sodium azide and 0.1% gelatin.

Blocking peptide available for competition studies, sc-46475 P, (100 µg peptide in 0.5 ml PBS containing < 0.1% sodium azide and 0.2% BSA).

STORAGE

Store at 4° C, ****DO NOT FREEZE****. Stable for one year from the date of shipment. Non-hazardous. No MSDS required.

APPLICATIONS

RASSF2 (P-17) is recommended for detection of RASSF2 of mouse, rat and human origin by Western Blotting (starting dilution 1:200, dilution range 1:100-1:1000), immunoprecipitation [1-2 µg per 100-500 µg of total protein (1 ml of cell lysate)], immunofluorescence (starting dilution 1:50, dilution range 1:50-1:500), immunohistochemistry (including paraffin-embedded sections) (starting dilution 1:50, dilution range 1:50-1:500) and solid phase ELISA (starting dilution 1:30, dilution range 1:30-1:3000).

RASSF2 (P-17) is also recommended for detection of RASSF2 in additional species, including equine and canine.

Suitable for use as control antibody for RASSF2 siRNA (h): sc-45722, RASSF2 siRNA (m): sc-45723, RASSF2 shRNA Plasmid (h): sc-45722-SH, RASSF2 shRNA Plasmid (m): sc-45723-SH, RASSF2 shRNA (h) Lentiviral Particles: sc-45722-V and RASSF2 shRNA (m) Lentiviral Particles: sc-45723-V.

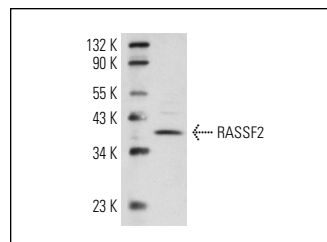
Molecular Weight of RASSF2: 38 kDa.

Positive Controls: CCRF-CEM cell lysate: sc-2225.

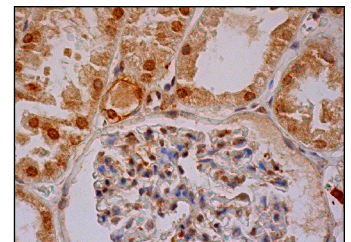
RECOMMENDED SECONDARY REAGENTS

To ensure optimal results, the following support (secondary) reagents are recommended: 1) Western Blotting: use donkey anti-goat IgG-HRP: sc-2020 (dilution range: 1:2000-1:100,000) or Cruz Marker™ compatible donkey anti-goat IgG-HRP: sc-2033 (dilution range: 1:2000-1:5000), Cruz Marker™ Molecular Weight Standards: sc-2035, TBS Blotto A Blocking Reagent: sc-2333 and Western Blotting Luminol Reagent: sc-2048. 2) Immunoprecipitation: use Protein A/G PLUS-Agarose: sc-2003 (0.5 ml agarose/2.0 ml). 3) Immunofluorescence: use donkey anti-goat IgG-FITC: sc-2024 (dilution range: 1:100-1:400) or donkey anti-goat IgG-TR: sc-2783 (dilution range: 1:100-1:400) with UltraCruz™ Mounting Medium: sc-24941. 4) Immunohistochemistry: use ImmunoCruz™: sc-2053 or ABC: sc-2023 goat IgG Staining Systems.

DATA



RASSF2 (P-17): sc-46475. Western blot analysis of RASSF2 expression in CCRF-CEM whole cell lysate.



RASSF2 (P-17): sc-46475. Immunoperoxidase staining of formalin fixed, paraffin-embedded human kidney tissue showing nuclear staining of cells in glomeruli and nuclear and cytoplasmic staining of cells in tubules.

SELECT PRODUCT CITATIONS

1. Cooper, W.N., et al. 2009. RASSF2 associates with and stabilizes the proapoptotic kinase MST2. *Oncogene* 28: 2988-2998.

RESEARCH USE

For research use only, not for use in diagnostic procedures.

PROTOCOLS

See our web site at www.scbt.com or our catalog for detailed protocols and support products.


 MONOS
Satisfaction
Guaranteed

Try **RASSF2 (E-11): sc-376347**, our highly recommended monoclonal alternative to RASSF2 (P-17).