

RGMa (D-16): sc-46482

BACKGROUND

The repulsive guidance molecule (RGM) family of proteins are important in the guidance of growth cones of developing neurons. They are repulsive for a group of axons, those from the temporal half of the retina. RGM have been implicated in both axonal guidance and neural tube closure, but unlike ephrins, semaphorins, netrins and slits, no receptor mechanism for RGM activation has been defined. Dorsal root ganglion axons do not respond to RGM but neogenin (a netrin-binding protein which can function as an RGM receptor) expression can spur RGM responsiveness. The RGM proteins are attached to the membrane by a GPI-anchor. Two members of this family, RGMa and RGMb, are expressed in the nervous system. RGMc, also known as hemojuvelin, is a part of the signaling pathway activating hepcidin and works together with hepcidin to restrict iron absorption in the gut. Defects in the gene encoding for RGMc cause the autosomal recessive disorder juvenile hemochromatosis (JH).

REFERENCES

1. Matsunaga, E. and Chedotal, A. 2004. Repulsive guidance molecule/neogenin: a novel ligand-receptor system playing multiple roles in neural development. *Dev. Growth Differ.* 46: 481-486.
2. Matsunaga, E., et al. 2004. RGM and its receptor neogenin regulate neuronal survival. *Nat. Cell Biol.* 6: 749-755.

CHROMOSOMAL LOCATION

Genetic locus: RGMA (human) mapping to 15q26.1; Rgma (mouse) mapping to 7 D1.

SOURCE

RGMa (D-16) is an affinity purified goat polyclonal antibody raised against a peptide mapping within an internal region of RGMa of human origin.

PRODUCT

Each vial contains 200 µg IgG in 1.0 ml of PBS with < 0.1% sodium azide and 0.1% gelatin.

Blocking peptide available for competition studies, sc-46482 P, (100 µg peptide in 0.5 ml PBS containing < 0.1% sodium azide and 0.2% BSA).

APPLICATIONS

RGMa (D-16) is recommended for detection of RGMa of human and, to a lesser extent, mouse and rat origin by Western Blotting (starting dilution 1:200, dilution range 1:100-1:1000), immunofluorescence (starting dilution 1:50, dilution range 1:50-1:500), immunohistochemistry (including paraffin-embedded sections) (starting dilution 1:50, dilution range 1:50-1:500) and solid phase ELISA (starting dilution 1:30, dilution range 1:30-1:3000).

Suitable for use as control antibody for RGMa siRNA (h): sc-45732, RGMa siRNA (m): sc-45733, RGMa shRNA Plasmid (h): sc-45732-SH, RGMa shRNA Plasmid (m): sc-45733-SH, RGMa shRNA (h) Lentiviral Particles: sc-45732-V and RGMa shRNA (m) Lentiviral Particles: sc-45733-V.

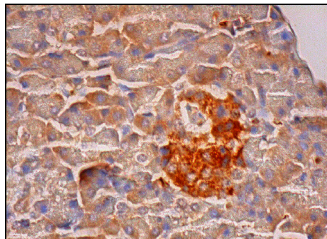
Molecular Weight of RGMa: 55 kDa.

Molecular Weight of cleaved mature RGMa: 38 kDa.

RECOMMENDED SECONDARY REAGENTS

To ensure optimal results, the following support (secondary) reagents are recommended: 1) Western Blotting: use donkey anti-goat IgG-HRP: sc-2020 (dilution range: 1:2000-1:100,000) or Cruz Marker™ compatible donkey anti-goat IgG-HRP: sc-2033 (dilution range: 1:2000-1:5000), Cruz Marker™ Molecular Weight Standards: sc-2035, TBS Blotto A Blocking Reagent: sc-2333 and Western Blotting Luminol Reagent: sc-2048. 2) Immunofluorescence: use donkey anti-goat IgG-FITC: sc-2024 (dilution range: 1:100-1:400) or donkey anti-goat IgG-TR: sc-2783 (dilution range: 1:100-1:400) with UltraCruz™ Mounting Medium: sc-24941. 3) Immunohistochemistry: use ImmunoCruz™: sc-2053 or ABC: sc-2023 goat IgG Staining Systems.

DATA



RGMa (D-16): sc-46482. Immunoperoxidase staining of formalin fixed, paraffin-embedded human pancreas tissue showing cytoplasmic staining of exocrine glandular cells and Islets of Langerhans.

SELECT PRODUCT CITATIONS

1. Li, J., et al. 2011. Potential prognostic value of repulsive guidance molecules in breast cancer. *Anticancer Res.* 31: 1703-1711.
2. Li, J., et al. 2011. Repulsive guidance molecules, novel bone morphogenetic protein co-receptors, are key regulators of the growth and aggressiveness of prostate cancer cells. *Int. J. Oncol.* 40: 544-550.

STORAGE

Store at 4° C, ****DO NOT FREEZE****. Stable for one year from the date of shipment. Non-hazardous. No MSDS required.

RESEARCH USE

For research use only, not for use in diagnostic procedures.

PROTOCOLS

See our web site at www.scbt.com or our catalog for detailed protocols and support products.

MONOS
Satisfaction
Guaranteed

Try **RGMa (E-10): sc-393046**, our highly recommended monoclonal alternative to RGMa (D-16).