

Vangl1 (Y-18): sc-46558

BACKGROUND

The Vang family of proteins are integral membrane proteins that are homologues of the *Drosophila* tissue polarity gene Strabismus. The gene encoding for Van Gogh-like protein 1 (Vangl1), also designated Strabismus 2 (STB2), localizes to human chromosome 1p13.1. Van Gogh-like protein 2 (Vangl2), also designated Strabismus 1 (STB1), localizes to chromosome 1q23.2. Vangl1 is expressed primarily in testis and ovary, but is also expressed in gastric and pancreatic cancer. Vangl proteins play a key developmental role in establishing planar cell polarity (PCP) and in regulating convergent extension (CE) movements during embryogenesis. Vangl1 and Vangl2 are both downregulated in several cancer cell lines and primary tumors.

CHROMOSOMAL LOCATION

Genetic locus: VANGL1 (human) mapping to 1p13.1; Vangl1 (mouse) mapping to 3 F2.2.

SOURCE

Vangl1 (Y-18) is an affinity purified goat polyclonal antibody raised against a peptide mapping within a cytoplasmic domain of Vangl1 of human origin.

PRODUCT

Each vial contains 200 µg IgG in 1.0 ml of PBS with < 0.1% sodium azide and 0.1% gelatin.

Blocking peptide available for competition studies, sc-46558 P, (100 µg peptide in 0.5 ml PBS containing < 0.1% sodium azide and 0.2% BSA).

STORAGE

Store at 4° C, **DO NOT FREEZE**. Stable for one year from the date of shipment. Non-hazardous. No MSDS required.

APPLICATIONS

Vangl1 (Y-18) is recommended for detection of Vangl1 of mouse, rat and human origin by Western Blotting (starting dilution 1:200, dilution range 1:100-1:1000), immunoprecipitation [1-2 µg per 100-500 µg of total protein (1 ml of cell lysate)], immunofluorescence (starting dilution 1:50, dilution range 1:50-1:500), immunohistochemistry (including paraffin-embedded sections) (starting dilution 1:50, dilution range 1:50-1:500) and solid phase ELISA (starting dilution 1:30, dilution range 1:30-1:3000).

Vangl1 (Y-18) is also recommended for detection of Vangl1 in additional species, including equine, canine, bovine and porcine.

Suitable for use as control antibody for Vangl1 siRNA (h): sc-45789, Vangl1 siRNA (m): sc-45790, Vangl1 shRNA Plasmid (h): sc-45789-SH, Vangl1 shRNA Plasmid (m): sc-45790-SH, Vangl1 shRNA (h) Lentiviral Particles: sc-45789-V and Vangl1 shRNA (m) Lentiviral Particles: sc-45790-V.

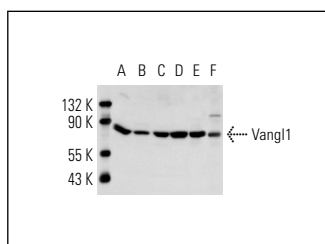
Molecular Weight of Vangl1: 66 kDa.

Positive Controls: ES-2 cell lysate: sc-24674, HeLa whole cell lysate: sc-2200 or CHO-K1 cell lysate: sc-3809.

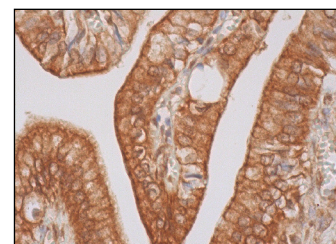
RECOMMENDED SECONDARY REAGENTS

To ensure optimal results, the following support (secondary) reagents are recommended: 1) Western Blotting: use donkey anti-goat IgG-HRP: sc-2020 (dilution range: 1:2000-1:100,000) or Cruz Marker™ compatible donkey anti-goat IgG-HRP: sc-2033 (dilution range: 1:2000-1:5000), Cruz Marker™ Molecular Weight Standards: sc-2035, TBS Blotto A Blocking Reagent: sc-2333 and Western Blotting Luminol Reagent: sc-2048. 2) Immunoprecipitation: use Protein A/G PLUS-Agarose: sc-2003 (0.5 ml agarose/2.0 ml). 3) Immunofluorescence: use donkey anti-goat IgG-FITC: sc-2024 (dilution range: 1:100-1:400) or donkey anti-goat IgG-TR: sc-2783 (dilution range: 1:100-1:400) with UltraCruz™ Mounting Medium: sc-24941. 4) Immunohistochemistry: use ImmunoCruz™: sc-2053 or ABC: sc-2023 goat IgG Staining Systems.

DATA



Vangl1 (Y-18): sc-46558. Western blot analysis of Vangl1 expression in SW-13 (A), HOS (B), ES-2 (C), HeLa (D) and CHO-K1 (E) whole cell lysates and mouse testis tissue extract (F).



Vangl1 (Y-18): sc-46558. Immunoperoxidase staining of formalin fixed, paraffin-embedded human gall bladder tissue showing cytoplasmic and membrane staining of glandular cells.

RESEARCH USE

For research use only, not for use in diagnostic procedures.

PROTOCOLS

See our web site at www.scbt.com or our catalog for detailed protocols and support products.



MONOS
Satisfaction
Guaranteed

Try **Vangl1 (E-3): sc-166844**, our highly recommended monoclonal alternative to Vangl1 (Y-18).