

Annexin XI (B-3): sc-46686

BACKGROUND

The Annexin family of calcium-binding proteins is composed of at least ten mammalian genes. It is characterized by a conserved core domain, which binds to phospholipids in a Ca^{2+} -dependent manner, and a unique amino terminal region, which may confer binding specificity. The Annexin family has been implicated as regulators of such diverse processes as ion-flux, endocytosis and exocytosis, and cellular adhesion. Two forms of Annexin XI, designated A and B, have been identified. Transfection of COS-7 cells with Annexin XI-A, but not Annexin XI-B, causes formation of Annexin XI-associated vesicles.

CHROMOSOMAL LOCATION

Genetic locus: ANXA11 (human) mapping to 10q22.3; Anxa11 (mouse) mapping to 14 A3.

SOURCE

Annexin XI (B-3) is a mouse monoclonal antibody raised against amino acids 376-420 of Annexin XI of human origin.

PRODUCT

Each vial contains 200 μg IgG_{2a} kappa light chain in 1.0 ml of PBS with < 0.1% sodium azide and 0.1% gelatin.

Annexin XI (D-12) is available conjugated to agarose (sc-46686 AC), 500 μg /0.25 ml agarose in 1 ml, for IP; to HRP (sc-46686 HRP), 200 μg /ml, for WB, IHC(P) and ELISA; to either phycoerythrin (sc-46686 PE), fluorescein (sc-46686 FITC), Alexa Fluor® 488 (sc-46686 AF488), Alexa Fluor® 546 (sc-46686 AF546), Alexa Fluor® 594 (sc-46686 AF594) or Alexa Fluor® 647 (sc-46686 AF647), 200 μg /ml, for WB (RGB), IF, IHC(P) and FCM; and to either Alexa Fluor® 680 (sc-46686 AF680) or Alexa Fluor® 790 (sc-46686 AF790), 200 μg /ml, for Near-Infrared (NIR) WB, IF and FCM.

Alexa Fluor® is a trademark of Molecular Probes, Inc., Oregon, USA

RESEARCH USE

For research use only, not for use in diagnostic procedures.

APPLICATIONS

Annexin XI (D-12) is recommended for detection of Annexin XI of mouse, rat and human origin by Western Blotting (starting dilution 1:100, dilution range 1:100-1:2000), immunoprecipitation [1-2 μg per 100-500 μg of total protein (1 ml of cell lysate)], immunofluorescence (starting dilution 1:50, dilution range 1:50-1:500), immunohistochemistry (including paraffin-embedded sections) (starting dilution 1:50, dilution range 1:50-1:500) and solid phase ELISA (starting dilution 1:30, dilution range 1:30-1:3000).

Suitable for use as control antibody for Annexin XI siRNA (h): sc-29694, Annexin XI siRNA (m): sc-29695, Annexin XI shRNA Plasmid (h): sc-29694-SH, Annexin XI shRNA Plasmid (m): sc-29695-SH, Annexin XI shRNA (h) Lentiviral Particles: sc-29694-V and Annexin XI shRNA (m) Lentiviral Particles: sc-29695-V.

Molecular Weight of Annexin XI: 50-56 kDa.

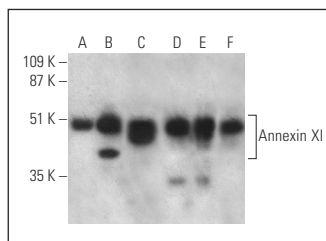
Positive Controls: A-431 nuclear extract: sc-2122, Annexin XI (h): 293T Lysate: sc-170010 or A-431 whole cell lysate: sc-2201.

RECOMMENDED SUPPORT REAGENTS

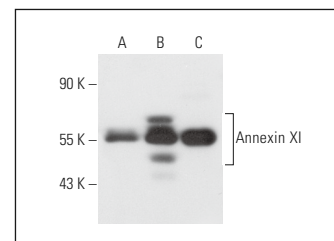
To ensure optimal results, the following support reagents are recommended:

- 1) Western Blotting: use m-IgG κ BP-HRP: sc-516102 or m-IgG κ BP-HRP (Cruz Marker): sc-516102-CM (dilution range: 1:1000-1:10000), Cruz Marker™ Molecular Weight Standards: sc-2035, UltraCruz® Blocking Reagent: sc-516214 and Western Blotting Luminol Reagent: sc-2048.
- 2) Immunoprecipitation: use Protein A/G PLUS-Agarose: sc-2003 (0.5 ml agarose/2.0 ml).
- 3) Immunofluorescence: use m-IgG κ BP-FITC: sc-516140 or m-IgG κ BP-PE: sc-516141 (dilution range: 1:50-1:200) with UltraCruz® Mounting Medium: sc-24941 or UltraCruz® Hard-set Mounting Medium: sc-359850.
- 4) Immunohistochemistry: use m-IgG κ BP-HRP: sc-516102 with DAB, 50X: sc-24982 and Immunohistomount: sc-45086, or Organo/Limonene Mount: sc-45087.

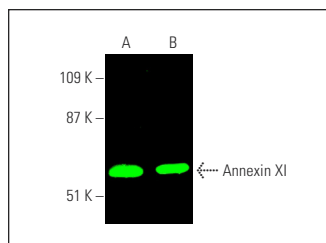
DATA



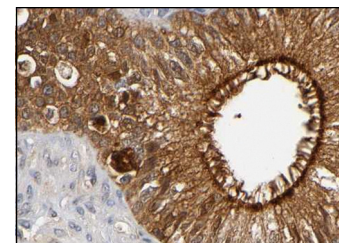
Annexin XI (D-12) HRP: sc-46686 HRP. Direct western blot analysis of Annexin XI expression in NAMALWA (A), 293T (B), A-431 (C) and WI-38 (D) whole cell lysates and A-431 (E) and 3611-RF (F) nuclear extracts.



Annexin XI (D-12): sc-46686. Western blot analysis of Annexin XI expression in non-transfected 293T: sc-117752 (A), human Annexin XI transfected 293T: sc-170010 (B) and WI-38 (C) whole cell lysates.



Annexin XI (D-12): sc-46686. Near-infrared western blot analysis of Annexin XI expression in WI-38 (A) and Jurkat (B) whole cell lysates. Blocked with UltraCruz® Blocking Reagent: sc-516214. Detection reagent used: m-IgG κ BP-CFL 680: sc-516180.



Annexin XI (D-12): sc-46686. Immunoperoxidase staining of formalin fixed, paraffin-embedded human epididymis tissue showing membrane, cytoplasmic and nuclear staining of glandular cells. Kindly provided by The Swedish Human Protein Atlas (HPA) program.

SELECT PRODUCT CITATIONS

1. Yim, W.W., et al. 2022. Annexins A1 and A2 are recruited to larger lysosomal injuries independently of ESCRTs to promote repair. *FEBS Lett.* 596: 991-1003.
2. Shen, Q., et al. 2022. HSF1 stimulates glutamine transport by super-enhancer-driven lncRNA LINC00857 in colorectal cancer. *Cancers* 14: 3855.
3. Park, S., et al. 2023. The mammalian midbody and midbody remnant are assembly sites for RNA and localized translation. *Dev. Cell* 58: 1917-1932.e6.

STORAGE

Store at 4° C, **DO NOT FREEZE**. Stable for one year from the date of shipment. Non-hazardous. No MSDS required.