

# EMMPRIN (B-5): sc-46700

## BACKGROUND

Extracellular matrix metalloproteinase inducer (EMMPRIN), also designated basigin or CD147, is involved in the regulation of matrix remodeling at the epidermal-dermal interface. EMMPRIN stimulates the production of interstitial collagenase, gelatinase A, stromelysin-1 and various metalloproteinases (MMPs) by fibroblasts. These enzymes, which are typically increased during tissue degradation and wound healing, are important factors in cancer invasion and metastasis.

## CHROMOSOMAL LOCATION

Genetic locus: Bsg (mouse) mapping to 10 C1.

## SOURCE

EMMPRIN (B-5) is a mouse monoclonal antibody raised against amino acids 1-190 of EMMPRIN of mouse origin.

## PRODUCT

Each vial contains 200 µg IgG<sub>2b</sub> kappa light chain in 1.0 ml of PBS with < 0.1% sodium azide and 0.1% gelatin.

EMMPRIN (B-5) is available conjugated to agarose (sc-46700 AC), 500 µg/0.25 ml agarose in 1 ml, for IP; to HRP (sc-46700 HRP), 200 µg/ml, for WB, IHC(P) and ELISA; to either phycoerythrin (sc-46700 PE), fluorescein (sc-46700 FITC), Alexa Fluor® 488 (sc-46700 AF488), Alexa Fluor® 546 (sc-46700 AF546), Alexa Fluor® 594 (sc-46700 AF594) or Alexa Fluor® 647 (sc-46700 AF647), 200 µg/ml, for WB (RGB), IF, IHC(P) and FCM; and to either Alexa Fluor® 680 (sc-46700 AF680) or Alexa Fluor® 790 (sc-46700 AF790), 200 µg/ml, for Near-Infrared (NIR) WB, IF and FCM.

Alexa Fluor® is a trademark of Molecular Probes, Inc., Oregon, USA

## APPLICATIONS

EMMPRIN (B-5) is recommended for detection of EMMPRIN of mouse and rat origin by Western Blotting (starting dilution 1:200, dilution range 1:100-1:1000), immunoprecipitation [1-2 µg per 100-500 µg of total protein (1 ml of cell lysate)], immunofluorescence (starting dilution 1:50, dilution range 1:50-1:500) and solid phase ELISA (starting dilution 1:30, dilution range 1:30-1:3000).

Suitable for use as control antibody for EMMPRIN siRNA (m): sc-35299, EMMPRIN siRNA (r): sc-156103, EMMPRIN shRNA Plasmid (m): sc-35299-SH, EMMPRIN shRNA Plasmid (r): sc-156103-SH, EMMPRIN shRNA (m) Lentiviral Particles: sc-35299-V and EMMPRIN shRNA (r) Lentiviral Particles: sc-156103-V.

Molecular Weight of EMMPRIN: 55 kDa.

Positive Controls: RAW 264.7 whole cell lysate: sc-2211, CTLL-2 cell lysate: sc-2242 or PC-12 cell lysate: sc-2250.

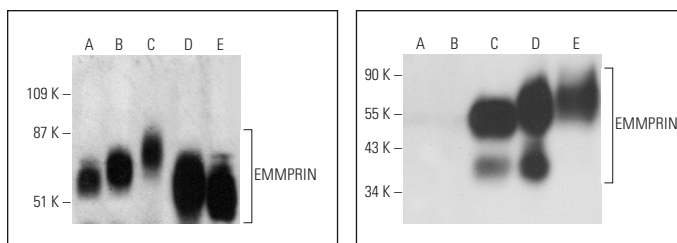
## STORAGE

Store at 4° C, **\*\*DO NOT FREEZE\*\***. Stable for one year from the date of shipment. Non-hazardous. No MSDS required.

## RESEARCH USE

For research use only, not for use in diagnostic procedures.

## DATA



EMMPRIN (B-5) HRP: sc-46700 HRP. Direct western blot analysis of EMMPRIN expression in Hs68 (A), RAW 264.7 (B), CTLL-2 (C), c4 (D) and BYDP (E) whole cell lysates.

EMMPRIN (B-5): sc-46700. Western blot analysis of EMMPRIN expression in Jurkat (A), Hs68 (B), RAW 264.7 (C), CTLL-2 (D) and PC-12 (E) whole cell lysates. Note lack of reactivity with human EMMPRIN in lanes A and B.

## SELECT PRODUCT CITATIONS

- Zavadzkas, J., et al. 2008. Cardiac-restricted overexpression of extracellular matrix metalloproteinase inducer causes myocardial remodeling and dysfunction in aging mice. *Am. J. Physiol. Heart Circ. Physiol.* 295: H1394-H1402.
- Dang, B., et al. 2015. Cyclophilin A/cluster of differentiation 147 interactions participate in early brain injury after subarachnoid hemorrhage in rats. *Crit. Care Med.* 43: e369-81.
- McGinley, C. and Bishop, D.J. 2016. Influence of training intensity on adaptations in acid/base transport proteins, muscle buffer capacity, and repeated-sprint ability in active men. *J. Appl. Physiol.* 121: 1290-1305.
- Yang, S., et al. 2017. CD147 promotes the proliferation, invasiveness, migration and angiogenesis of human lung carcinoma cells. *Oncol. Lett.* 13: 898-904.
- Lu, G., et al. 2018. Inhibition of the cyclophilin A-CD147 interaction attenuates right ventricular injury and dysfunction after acute pulmonary embolism in rats. *J. Biol. Chem.* 293: 12199-12208.
- Pahk, K., et al. 2019. SP-8356, a novel inhibitor of CD147-cyclophilin A interactions, reduces plaque progression and stabilizes vulnerable plaques in apoE-deficient mice. *Int. J. Mol. Sci.* 21: 95.
- Miyata, H., et al. 2021. SPATA33 localizes calcineurin to the mitochondria and regulates sperm motility in mice. *Proc. Natl. Acad. Sci. USA* 118: e2106673118.
- Butera, A., et al. 2022. CD147 targeting by AC-73 induces autophagy and reduces intestinal fibrosis associated with TNBS chronic colitis. *J. Crohns Colitis* 16: 1751-1761.
- Rupar, K., et al. 2023. Full activation of thermogenesis in brown adipocytes requires Basigin action. *FEBS J.* 290: 2673-2691.

## PROTOCOLS

See our web site at [www.scbt.com](http://www.scbt.com) for detailed protocols and support products.