

## BRD2 (N-16): sc-46807

### BACKGROUND

The bromodomain-containing proteins include BRD2, BRD3, BRD4 and BRDT. BRD2 (RING3 protein) is a mitogen-activated nuclear protein whose gene is located in the human MHC II region, suggesting its relation to HLA-associated diseases. The gene encoding BRD3 (RING3-like protein) contains two bromodomains and the gene encoding for the protein maps to chromosome 9q34. BRD4 (HUNK1 protein) is a nuclear protein involved in the regulation of chromosomal dynamics during mitosis. The testis-specific bromodomain protein BRDT contains a PEST sequence, indicating that it undergoes rapid intracellular degradation. The bromodomain-containing proteins are ubiquitously expressed.

### REFERENCES

1. Thorpe, K.L., Gorman, P., Thomas, C., Sheer, D., Trowsdale, J. and Beck, S. 1997. Chromosomal localization, gene structure and transcription pattern of the ORFX gene, a homologue of the MHC-linked RING3 gene. *Gene* 200: 177-183.
2. Zhou, M., Peng, C., Nie, X.M., Zhang, B.C., Zhu, S.G., Yu, Y., Li, X.L. and Li, G.Y. 2003. Expression of BRD7-interacting proteins, BRD2 and BRD3, in nasopharyngeal carcinoma tissues. *Ai Zheng* 22: 123-127.
3. Shang, E., Salazar, G., Crowley, T.E., Wang, X., Lopez, R.A., Wang, X. and Wolgemuth, D.J. 2004. Identification of unique, differentiation stage-specific patterns of expression of the bromodomain-containing genes BRD2, BRD3, BRD4, and BRDT in the mouse testis. *Gene Expr. Patterns* 4: 513-519.
4. Boyer, A., Lussier, J.G., Sinclair, A.H., McClive, P.J. and Silversides, D.W. 2004. Pre-sertoli specific gene expression profiling reveals differential expression of Ppt1 and BRD3 genes within the mouse genital ridge at the time of sex determination. *Biol. Reprod.* 71: 820-827.
5. Trousdale, R.K. and Wolgemuth, D.J. 2004. Bromodomain containing 2 (BRD2) is expressed in distinct patterns during ovarian folliculogenesis independent of FSH or GDF9 action. *Mol. Reprod. Dev.* 68: 261-268.
6. Crowley, T., Brunori, M., Rhee, K., Wang, X. and Wolgemuth, D.J. 2004. Change in nuclear-cytoplasmic localization of a double-bromodomain protein during proliferation and differentiation of mouse spinal cord and dorsal root ganglia. *Brain Res. Dev. Brain Res.* 149: 93-101.
7. Kanno, T., Kanno, Y., Siegel, R.M., Jang, M.K., Lenardo, M.J. and Ozato, K. 2004. Selective recognition of acetylated histones by bromodomain proteins visualized in living cells. *Mol. Cell* 13: 33-43.
8. Sinha, A., Faller, D.V. and Denis, G.V. 2005. Bromodomain analysis of BRD2-dependent transcriptional activation of cyclin A1. *Biochem. J.* 387: 257-269.

### CHROMOSOMAL LOCATION

Genetic locus: BRD2 (human) mapping to 6p21.32; Brd2 (mouse) mapping to 17 B1.

### SOURCE

BRD2 (N-16) is an affinity purified goat polyclonal antibody raised against a peptide mapping at the N-terminus of BRD2 of human origin.

### PRODUCT

Each vial contains 200 µg IgG in 1.0 ml of PBS with < 0.1% sodium azide and 0.1% gelatin.

Blocking peptide available for competition studies, sc-46807 P, (100 µg peptide in 0.5 ml PBS containing < 0.1% sodium azide and 0.2% BSA).

### APPLICATIONS

BRD2 (N-16) is recommended for detection of BRD2 of mouse, rat and human origin by Western Blotting (starting dilution 1:200, dilution range 1:100-1:1000), immunoprecipitation [1-2 µg per 100-500 µg of total protein (1 ml of cell lysate)], immunofluorescence (starting dilution 1:50, dilution range 1:50-1:500) and solid phase ELISA (starting dilution 1:30, dilution range 1:30-1:3000).

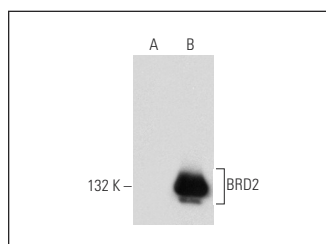
BRD2 (N-16) is also recommended for detection of BRD2 in additional species, including equine, canine, bovine and porcine.

Suitable for use as control antibody for BRD2 siRNA (h): sc-60282, BRD2 siRNA (m): sc-60283, BRD2 shRNA Plasmid (h): sc-60282-SH, BRD2 shRNA Plasmid (m): sc-60283-SH, BRD2 shRNA (h) Lentiviral Particles: sc-60282-V and BRD2 shRNA (m) Lentiviral Particles: sc-60283-V.

Molecular Weight of BRD2: 88 kDa.

Positive Controls: BRD2 (h): 293T Lysate: sc-117289, A-375 cell lysate: sc-3811 or HeLa nuclear extract: sc-2120.

### DATA



BRD2 (N-16): sc-46807. Western blot analysis of BRD2 expression in non-transfected: sc-117752 (A) and human BRD2 transfected: sc-117289 (B) 293T whole cell lysates.

### STORAGE

Store at 4° C, \*\*DO NOT FREEZE\*\*. Stable for one year from the date of shipment. Non-hazardous. No MSDS required.

### RESEARCH USE

For research use only, not for use in diagnostic procedures.

**MONOS**  
Satisfaction  
Guaranteed

Try **BRD2 (G-4): sc-393720** or **BRD2 (A-2): sc-514103**, our highly recommended monoclonal alternatives to BRD2 (N-16).