

# CCXCKR (C-16): sc-46835

## BACKGROUND

The C-C ( $\beta$  chemokine) G protein-coupled receptor family is characterized by a pair of adjacent cysteine residues. C-C chemokine receptor family members include CKR-1, CKR-2A, CKR-2B, CKR-3, CKR-4, CKR-5, CKR-6, CKR-7, CKR-8, CKR-9, CKR-10, CCXCKR, CCR-9, Bonzo, BOB (brother of Bonzo) and Duffy blood group antigen. Each of these receptors are G protein-coupled, seven pass transmembrane domain proteins whose major physiological role is to function in the chemotaxis of T cells and phagocytic cells to sites of inflammation. C-C chemokine receptor type 11 (CCXCKR, CCR-11 or CKR-11), acts as a receptor for CCL2, CCL8, CCL13, CCL19, CCL21 and CCL25. CCXCKR is predominantly expressed in heart tissue, but can also be detected in spleen, colon, pancreas, lung and small intestine.

## REFERENCES

- Gosling, J., Dairaghi, D.J., Wang, Y., Hanley, M., Talbot, D., Miao, Z. and Schall, T.J. 2000. Cutting edge: identification of a novel chemokine receptor that binds dendritic cell- and T cell-active chemokines including ELC, SLC and TECK. *J. Immunol.* 164: 2851-2856.
- Khoja, H., Wang, G., Ng, C.T., Tucker, J., Brown, T. and Shyamala, V. 2000. Cloning of CCRL1, an orphan seven transmembrane receptor related to chemokine receptors, expressed abundantly in the heart. *Gene* 246: 229-238.
- Schweickart, V.L., Epp, A., Raport, C.J. and Gray, P.W. 2000. CCR-11 is a functional receptor for the monocyte chemoattractant protein family of chemokines. *J. Biol. Chem.* 275: 9550-9556.
- Townson, J.R. and Nibbs, R.J. 2002. Characterization of mouse CCXCKR, a receptor for the lymphocyte-attracting chemokines TECK/mCCL25, SLC/mCCL21 and MIP-3 $\beta$ /mCCL19: comparison to human CCXCKR. *Eur. J. Immunol.* 32: 1230-1241.
- Comerford, I. and Nibbs, R.J. 2004. Post-translational control of chemokines: a role for decoy receptors? *Immunol. Lett.* 96: 163-174.

## CHROMOSOMAL LOCATION

Genetic locus: CCRL1 (human) mapping to 3q22; Ccr1 (mouse) mapping to 9 F1.

## SOURCE

CCXCKR (C-16) is an affinity purified goat polyclonal antibody raised against a peptide mapping at the C-terminus of CCXCKR of human origin.

## PRODUCT

Each vial contains 200  $\mu$ g IgG in 1.0 ml of PBS with < 0.1% sodium azide and 0.1% gelatin.

Blocking peptide available for competition studies, sc-46835 P, (100  $\mu$ g peptide in 0.5 ml PBS containing < 0.1% sodium azide and 0.2% BSA).

## STORAGE

Store at 4° C, \*\*DO NOT FREEZE\*\*. Stable for one year from the date of shipment. Non-hazardous. No MSDS required.

## APPLICATIONS

CCXCKR (C-16) is recommended for detection of CCXCKR of mouse and human origin by Western Blotting (starting dilution 1:200, dilution range 1:100-1:1000), immunoprecipitation [1–2  $\mu$ g per 100–500  $\mu$ g of total protein (1 ml of cell lysate)], immunofluorescence (starting dilution 1:50, dilution range 1:50-1:500) and solid phase ELISA (starting dilution 1:30, dilution range 1:30-1:3000).

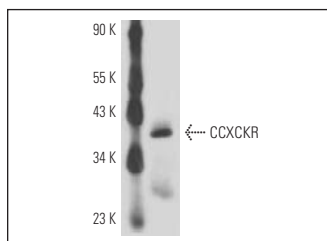
Suitable for use as control antibody for CCXCKR siRNA (h): sc-60339 and CCXCKR siRNA (m): sc-60340.

Molecular Weight of CCXCKR: 40 kDa.

## RECOMMENDED SECONDARY REAGENTS

To ensure optimal results, the following support (secondary) reagents are recommended: 1) Western Blotting: use donkey anti-goat IgG-HRP: sc-2020 (dilution range: 1:2000-1:100,000) or Cruz Marker™ compatible donkey anti-goat IgG-HRP: sc-2033 (dilution range: 1:2000-1:5000), Cruz Marker™ Molecular Weight Standards: sc-2035, TBS Blotto A Blocking Reagent: sc-2333 and Western Blotting Luminol Reagent: sc-2048. 2) Immunoprecipitation: use Protein A/G PLUS-Agarose: sc-2003 (0.5 ml agarose/2.0 ml). 3) Immunofluorescence: use donkey anti-goat IgG-FITC: sc-2024 (dilution range: 1:100-1:400) or donkey anti-goat IgG-TR: sc-2783 (dilution range: 1:100-1:400) with UltraCruz™ Mounting Medium: sc-24941.

## DATA



CCXCKR (C-16): sc-46835. Western blot analysis of CCXCKR expression in mouse heart tissue extract.

## RESEARCH USE

For research use only, not for use in diagnostic procedures.

## PROTOCOLS

See our web site at [www.scbt.com](http://www.scbt.com) or our catalog for detailed protocols and support products.