

Chitotriosidase (C-18): sc-46855

BACKGROUND

Chitinases are ubiquitous chitin-fragmenting hydrolases. The chitinase Chitotriosidase is capable of cleaving natural chitin and chitin-like substrates in humans and may play a role in immunity against pathogens containing chitin. Activated human macrophages secrete chitotriosidase and increased plasma levels of chitotriosidase are a feature of patients suffering from Gaucher disease. Expression of mouse Chitotriosidase is restricted to brain, skin, bone marrow, kidney, tongue, stomach and testis. The homology between Chitotriosidase and chitinases found in lower organisms is significant. Acidic mammalian chitinase precursor (AMCase) degrades chitotriose and chitin. AMCase is highly expressed in stomach tissues and is primarily a secreted protein. It is involved in Th2-mediated inflammation and may play a role in asthma and allergic diseases.

REFERENCES

1. Zhu, Z., et al. 2004. Acidic mammalian chitinase in asthmatic Th2 inflammation and IL-13 pathway activation. *Science* 304: 1678-1682.
2. Malaguarnera, L., et al. 2005. Interferon- γ , tumor necrosis factor- α , and lipopolysaccharide promote Chitotriosidase gene expression in human macrophages. *J. Clin. Lab. Anal.* 19: 128-132.
3. Di Rosa, M., et al. 2005. Effect of interferon- γ , interleukin-10, lipopolysaccharide and tumor necrosis factor- α on Chitotriosidase synthesis in human macrophages. *Clin. Chem. Lab. Med.* 43: 499-502.
4. Aerts, J.M., et al. 2005. Identification and use of biomarkers in Gaucher disease and other lysosomal storage diseases. *Acta Paediatr. Suppl.* 94: 43-46.
5. Deegan, P.B., et al. 2005. Clinical evaluation of biomarkers in Gaucher disease. *Acta Paediatr. Suppl.* 94: 47-50.
6. Brinkman, J., et al. 2005. Plasma chitotriosidase and CCL18: early biochemical surrogate markers in type B Niemann-Pick disease. *J. Inherit. Metab. Dis.* 28: 13-20.

CHROMOSOMAL LOCATION

Genetic locus: CHIT1 (human) mapping to 1q32.1.

SOURCE

Chitotriosidase (C-18) is an affinity purified goat polyclonal antibody raised against a peptide mapping near the C-terminus of Chitotriosidase of human origin.

PRODUCT

Each vial contains 200 μ g IgG in 1.0 ml of PBS with < 0.1% sodium azide and 0.1% gelatin.

Blocking peptide available for competition studies, sc-46855 P, (100 μ g peptide in 0.5 ml PBS containing < 0.1% sodium azide and 0.2% BSA).

STORAGE

Store at 4° C, ****DO NOT FREEZE****. Stable for one year from the date of shipment. Non-hazardous. No MSDS required.

APPLICATIONS

Chitotriosidase (C-18) is recommended for detection of Chitotriosidase of human origin by Western Blotting (starting dilution 1:200, dilution range 1:100-1:1000), immunofluorescence (starting dilution 1:50, dilution range 1:50-1:500), immunohistochemistry (including paraffin-embedded sections) (starting dilution 1:50, dilution range 1:50-1:500) and solid phase ELISA (starting dilution 1:30, dilution range 1:30-1:3000).

Suitable for use as control antibody for Chitotriosidase siRNA (h): sc-60365, Chitotriosidase shRNA Plasmid (h): sc-60365-SH and Chitotriosidase shRNA (h) Lentiviral Particles: sc-60365-V.

Molecular Weight of Chitotriosidase precursor: 50 kDa.

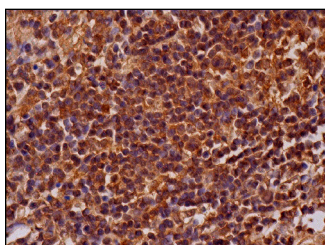
Molecular Weight of Chitotriosidase processed form: 39 kDa.

Positive Controls: Hep G2 cell lysate: sc-2227 or AML-193 whole cell lysate: sc-364182.

RECOMMENDED SECONDARY REAGENTS

To ensure optimal results, the following support (secondary) reagents are recommended: 1) Western Blotting: use donkey anti-goat IgG-HRP: sc-2020 (dilution range: 1:2000-1:100,000) or Cruz Marker™ compatible donkey anti-goat IgG-HRP: sc-2033 (dilution range: 1:2000-1:5000), Cruz Marker™ Molecular Weight Standards: sc-2035, TBS Blotto A Blocking Reagent: sc-2333 and Western Blotting Luminol Reagent: sc-2048. 2) Immunofluorescence: use donkey anti-goat IgG-FITC: sc-2024 (dilution range: 1:100-1:400) or donkey anti-goat IgG-TR: sc-2783 (dilution range: 1:100-1:400) with UltraCruz™ Mounting Medium: sc-24941. 3) Immunohistochemistry: use ImmunoCruz™: sc-2053 or ABC: sc-2023 goat IgG Staining Systems.

DATA



Chitotriosidase (C-18): sc-46855. Immunoperoxidase staining of formalin fixed, paraffin-embedded human lymph node tissue showing cytoplasmic staining of cells in germinal centers and cells in non-germinal centers.

RESEARCH USE

For research use only, not for use in diagnostic procedures.



Try **Chitotriosidase (A-11): sc-271460** or **Chitotriosidase (A-3): sc-271282**, our highly recommended monoclonal alternatives to Chitotriosidase (C-18).