

CRMP-5 (C-16): sc-46875

BACKGROUND

Collapsin response mediator proteins (CRMPs), including CRMP-1 (DRP-1), CRMP-2 (DRP-2 or TOAD64), CRMP-3 (DRP-4), CRMP-4 (DRP-3) and CRMP-5 (DRP-5), mediate signal transduction after exposure of neural cells to the axon guidance molecule Semaphorin 3A (SEMA3A)/collapsin. CRMPs are present in the developing cerebral cortex and neocortical neurons and are responsive to SEMA3A. In the adult brain, the expression of CRMPs is dramatically down-regulated. However, they remain expressed in structures that retain their capacity for differentiation and plasticity. CRMP-5, which is phylogenetically divergent from the other four CRMPs, is expressed in the filopodia of growth cones as well as in adult central and peripheral neurons, including synapses. The paraneoplastic CRMP-5 autoantibody (CRMP-5-IgG) is also associated with small-cell lung carcinoma or thymoma.

CHROMOSOMAL LOCATION

Genetic locus: DPYSL5 (human) mapping to 2p23.3; Dpysl5 (mouse) mapping to 5 B1.

SOURCE

CRMP-5 (C-16) is an affinity purified goat polyclonal antibody raised against a peptide mapping at the C-terminus of CRMP-5 of human origin.

PRODUCT

Each vial contains 200 µg IgG in 1.0 ml of PBS with < 0.1% sodium azide and 0.1% gelatin.

Blocking peptide available for competition studies, sc-46875 P, (100 µg peptide in 0.5 ml PBS containing < 0.1% sodium azide and 0.2% BSA).

STORAGE

Store at 4° C, ****DO NOT FREEZE****. Stable for one year from the date of shipment. Non-hazardous. No MSDS required.

APPLICATIONS

CRMP-5 (C-16) is recommended for detection of CRMP-5 of mouse, rat and human origin by Western Blotting (starting dilution 1:200, dilution range 1:100-1:1000), immunoprecipitation [1-2 µg per 100-500 µg of total protein (1 ml of cell lysate)], immunofluorescence (starting dilution 1:50, dilution range 1:50-1:500) and solid phase ELISA (starting dilution 1:30, dilution range 1:30-1:3000).

CRMP-5 (C-16) is also recommended for detection of CRMP-5 in additional species, including equine, canine, bovine and porcine.

Suitable for use as control antibody for CRMP-5 siRNA (h): sc-60449, CRMP-5 siRNA (m): sc-60450, CRMP-5 shRNA Plasmid (h): sc-60449-SH, CRMP-5 shRNA Plasmid (m): sc-60450-SH, CRMP-5 shRNA (h) Lentiviral Particles: sc-60449-V and CRMP-5 shRNA (m) Lentiviral Particles: sc-60450-V.

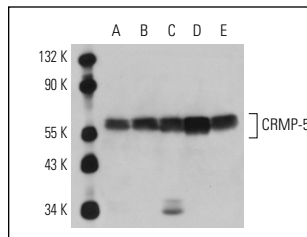
Molecular Weight of CRMP-5: 62 kDa.

Positive Controls: Y79 cell lysate: sc-2240, SK-N-SH cell lysate: sc-2410 or CRMP-5 (h): 293T Lysate: sc-176143.

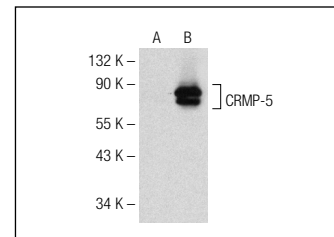
RECOMMENDED SECONDARY REAGENTS

To ensure optimal results, the following support (secondary) reagents are recommended: 1) Western Blotting: use donkey anti-goat IgG-HRP: sc-2020 (dilution range: 1:2000-1:100,000) or Cruz Marker™ compatible donkey anti-goat IgG-HRP: sc-2033 (dilution range: 1:2000-1:5000), Cruz Marker™ Molecular Weight Standards: sc-2035, TBS Blotto A Blocking Reagent: sc-2333 and Western Blotting Luminol Reagent: sc-2048. 2) Immunoprecipitation: use Protein A/G PLUS-Agarose: sc-2003 (0.5 ml agarose/2.0 ml). 3) Immunofluorescence: use donkey anti-goat IgG-FITC: sc-2024 (dilution range: 1:100-1:400) or donkey anti-goat IgG-TR: sc-2783 (dilution range: 1:100-1:400) with UltraCruz™ Mounting Medium: sc-24941.

DATA



CRMP-5 (C-16): sc-46875. Western blot analysis of CRMP-5 expression in H69AR (A), Y79 (B) and SK-N-SH (C) whole cell lysates and rat postnatal brain (D) and mouse brain (E) tissue extracts.



CRMP-5 (C-16): sc-46875. Western blot analysis of CRMP-5 expression in non-transfected: sc-117752 (A) and human CRMP-5 transfected: sc-176143 (B) 293T whole cell lysates.

RESEARCH USE

For research use only, not for use in diagnostic procedures.

PROTOCOLS

See our web site at www.scbt.com or our catalog for detailed protocols and support products.

MONOS
Satisfaction
Guaranteed

Try **CRMP-5 (CR-1): sc-58515** or **CRMP-5 (C-7): sc-374320**, our highly recommended monoclonal alternatives to CRMP-5 (C-16).