

cystatin D (C-18): sc-46889

BACKGROUND

The cystatin superfamily is a well-established family of cysteine protease inhibitors. Cystatins A and B (type 1) are mainly intracellular; cystatins C, D, E/M, F, G, S, SN and SA are extracellular (type 2); and the kininogens are type 3 cystatins which are intravascular proteins. All true cystatins inhibit cysteine peptidases of the papain family, such as cathepsins, and some also inhibit legumain family enzymes. Cystatin SA, S and SN are found primarily in saliva. Cystatin S and SN can also be expressed in tears, urine and seminal fluid. Cystatin C is a related protein which is expressed in brain, thymus, ovary, epididymis and vas deferens. Cystatin D protects against proteinases in the oral cavity, while cystatin E/M and F moderate the inhibition of cathepsin proteins. The fetuins, part of the cystatin superfamily, are secretable proteins that influence osteogenesis and bone resorption, regulation of the Insulin and hepatocyte growth factor receptors, and the response to systemic inflammation. High molecular weight kininogen (Kininogen HC) and low molecular weight kininogen (Kininogen LC) have varied roles, though they both inhibit the thrombin- and plasmin-induced aggregation of thrombocytes.

REFERENCES

1. Saitoh, E., et al. 1988. Cystatin superfamily. Evidence that family II cystatin genes are evolutionarily related to family III cystatin genes. *Biol. Chem. Hoppe Seyler* 369: 191-197.
3. Nishio, C., et al. 2000. Involvement of cystatin C in oxidative stress-induced apoptosis of cultured rat CNS neurons. *Brain Res.* 873: 252-262.
4. Manoury, B., et al. 2001. Bm-CPI-2, a cystatin homolog secreted by the filarial parasite *Brugia malayi*, inhibits class II MHC-restricted antigen processing. *Curr. Biol.* 11: 447-451.
5. Janowski, R., et al. 2001. Human cystatin C, an amyloidogenic protein, dimerizes through three-dimensional domain swapping. *Nat. Struct. Biol.* 8: 316-320.
6. Aras, O., et al. 2001. Cystatin C is an independent predictor of fasting and post-methionine load total homocysteine concentrations among stable renal transplant recipients. *Clin. Chem.* 47: 1263-1268.
7. Calero, M., et al. 2001. Distinct properties of wildtype and the amyloidogenic human cystatin C variant of hereditary cerebral hemorrhage with amyloidosis, Icelandic type. *J. Neurochem.* 77: 628-637.

CHROMOSOMAL LOCATION

Genetic locus: CST5 (human) mapping to 20p11.21.

SOURCE

cystatin D (C-18) is an affinity purified goat polyclonal antibody raised against a peptide mapping at the C-terminus of cystatin D of human origin.

PRODUCT

Each vial contains 200 µg IgG in 1.0 ml of PBS with < 0.1% sodium azide and 0.1% gelatin.

Blocking peptide available for competition studies, sc-46889 P, (100 µg peptide in 0.5 ml PBS containing < 0.1% sodium azide and 0.2% BSA).

APPLICATIONS

cystatin D (C-18) is recommended for detection of mature cystatin D and cystatin D precursor of human origin by Western Blotting (starting dilution 1:200, dilution range 1:100-1:1000), immunofluorescence (starting dilution 1:50, dilution range 1:50-1:500), immunohistochemistry (including paraffin-embedded sections) (starting dilution 1:50, dilution range 1:50-1:500) and solid phase ELISA (starting dilution 1:30, dilution range 1:30-1:3000); may cross-react with cystatin C, cystatin S and cystatin 10.

Suitable for use as control antibody for cystatin D siRNA (h): sc-60489, cystatin D shRNA Plasmid (h): sc-60489-SH and cystatin D shRNA (h) Lentiviral Particles: sc-60489-V.

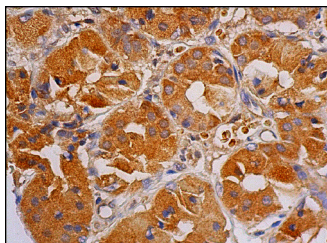
Molecular Weight of cystatin D: 13 kDa.

Positive Controls: human salivary gland extract: sc-363762.

RECOMMENDED SECONDARY REAGENTS

To ensure optimal results, the following support (secondary) reagents are recommended: 1) Western Blotting: use donkey anti-goat IgG-HRP: sc-2020 (dilution range: 1:2000-1:100,000) or Cruz Marker™ compatible donkey anti-goat IgG-HRP: sc-2033 (dilution range: 1:2000-1:5000), Cruz Marker™ Molecular Weight Standards: sc-2035, TBS Blotto A Blocking Reagent: sc-2333 and Western Blotting Luminol Reagent: sc-2048. 2) Immunofluorescence: use donkey anti-goat IgG-FITC: sc-2024 (dilution range: 1:100-1:400) or donkey anti-goat IgG-TR: sc-2783 (dilution range: 1:100-1:400) with UltraCruz™ Mounting Medium: sc-24941. 3) Immunohistochemistry: use ImmunoCruz™: sc-2053 or ABC: sc-2023 goat IgG Staining Systems.

DATA



cystatin D (C-18): sc-46889. Immunoperoxidase staining of formalin fixed, paraffin-embedded human salivary gland tissue showing cytoplasmic staining of glandular cells.

STORAGE

Store at 4° C, **DO NOT FREEZE**. Stable for one year from the date of shipment. Non-hazardous. No MSDS required.

RESEARCH USE

For research use only, not for use in diagnostic procedures.

PROTOCOLS

See our web site at www.scbt.com or our catalog for detailed protocols and support products.