

IL-20R β (K-17): sc-47059

BACKGROUND

The class II cytokine receptor family includes 12 members, 11 of which combine as various heterodimers to transduce signals across the cellular membrane for 27 cytokines. These cytokines are divided into four structurally related groups: six cytokines of the IL-10 family, 17 type I IFNs, one type II IFN and three IFN- λ . IL-20 is a member of the IL-10 family of cytokines that has been shown to be upregulated in psoriatic skin. The receptor for IL-20 (IL-20R) exists as a dimer consisting of IL-20R α and IL-20R β . IL-20R also functions as a receptor for IL-19, IL-24 and IL-26. It is highly expressed in skin, brain and testis. IL-20, IL20R α and IL-20R β all have higher expression levels in psoriatic lesional (LS) skin than in nonlesional (NL) skin, suggesting a role for these proteins as potential therapeutic targets. IL-20 can induce signal transducer and activator of transcription (Stat) activation through IL-20R.

REFERENCES

- Ho, A.S.Y., et al. 1993. A receptor for interleukin-10 is related to interferon receptors. *Proc. Natl. Acad. Sci. USA* 90: 11267-11271.
- Weber-Nordt, R.M., et al. 1994. Lipopoly-saccharide-dependent induction of IL-10 receptor expression on murine fibroblasts. *J. Immunol.* 153: 3734-3744.
- Ho, A.S., et al. 1995. Functional regions of the mouse interleukin-10 receptor cytoplasmic domain. *Mol. Cell. Biol.* 15: 5043-5053.
- Tan, J.C., et al. 1995. Characterization of recombinant extracellular domain of human interleukin-10 receptor. *J. Biol. Chem.* 270: 12906-12911.
- Carson, W.E., et al. 1995. The functional characterization of interleukin-10 receptor expression on human natural killer cells. *Blood* 85: 3577-3585.
- Corinti, S., et al. 2001. Regulatory activity of autocrine IL-10 on dendritic cell functions. *J. Immunol.* 166: 4312-4318.
- Vilcek, J. 2002. Novel interferons. *Nat. Immunol.* 4: 8-9.
- Stearns, M.E., et al. 2003. IL-10 signaling via IL-10E1 is dependent on tyrosine phosphorylation in the IL-10R α chain in human primary prostate cancer cell lines. *Oncogene* 22: 3781-3791.

CHROMOSOMAL LOCATION

Genetic locus: IL20RB (human) mapping to 3q22.3.

SOURCE

IL-20R β (K-17) is an affinity purified goat polyclonal antibody raised against a peptide mapping within an extracellular domain of IL-20R β of human origin.

PRODUCT

Each vial contains 200 μ g IgG in 1.0 ml of PBS with < 0.1% sodium azide and 0.1% gelatin.

Blocking peptide available for competition studies, sc-47059 P, (100 μ g peptide in 0.5 ml PBS containing < 0.1% sodium azide and 0.2% BSA).

RESEARCH USE

For research use only, not for use in diagnostic procedures.

APPLICATIONS

IL-20R β (K-17) is recommended for detection of IL-20R β isoform 1 of human origin by Western Blotting (starting dilution 1:200, dilution range 1:100-1:1000), immunoprecipitation [1-2 μ g per 100-500 μ g of total protein (1 ml of cell lysate)], immunofluorescence (starting dilution 1:50, dilution range 1:50-1:500) and solid phase ELISA (starting dilution 1:30, dilution range 1:30-1:3000).

IL-20R β (K-17) is also recommended for detection of IL-20R β isoform 1 in additional species, including bovine.

Suitable for use as control antibody for IL-20R β siRNA (h): sc-60833, IL-20R β shRNA Plasmid (h): sc-60833-SH and IL-20R β shRNA (h) Lentiviral Particles: sc-60833-V.

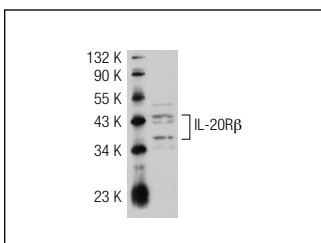
Molecular Weight of IL-20R β : 35 kDa.

Positive Controls: HeLa whole cell lysate: sc-2200.

RECOMMENDED SECONDARY REAGENTS

To ensure optimal results, the following support (secondary) reagents are recommended: 1) Western Blotting: use donkey anti-goat IgG-HRP: sc-2020 (dilution range: 1:2000-1:100,000) or Cruz Marker™ compatible donkey anti-goat IgG-HRP: sc-2033 (dilution range: 1:2000-1:5000), Cruz Marker™ Molecular Weight Standards: sc-2035, TBS Blotto A Blocking Reagent: sc-2333 and Western Blotting Luminol Reagent: sc-2048. 2) Immunoprecipitation: use Protein A/G PLUS-Agarose: sc-2003 (0.5 ml agarose/2.0 ml). 3) Immunofluorescence: use donkey anti-goat IgG-FITC: sc-2024 (dilution range: 1:100-1:400) or donkey anti-goat IgG-TR: sc-2783 (dilution range: 1:100-1:400) with UltraCruz™ Mounting Medium: sc-24941.

DATA



IL-20R β (K-17): sc-47059. Western blot analysis of IL-20R β expression in HeLa whole cell lysate.

STORAGE

Store at 4° C, **DO NOT FREEZE**. Stable for one year from the date of shipment. Non-hazardous. No MSDS required.

PROTOCOLS

See our web site at www.scbt.com or our catalog for detailed protocols and support products.