

IL-31 (N-16): sc-47073

BACKGROUND

IL-31 is a T cell cytokine that is preferentially produced by T helper type 2 cells. IL-31 signals through a heterodimeric receptor composed of the IL-31 receptor (IL-31R) and the oncostatin M receptor (OSM). This receptor complex recruits JAK1, JAK2, Stat1, Stat3 and Stat5 signaling pathways, as well as the PI 3-kinase/AKT cascade. SHP-2 and Shc adapter molecules are also recruited and contribute to an increased activation of the MAP kinase pathway in response to IL-31. Overexpression of IL-31 in mice results in pruritus and skin dermatitis resembling human atopic dermatitis (AD). Comparisons between skin from patients with AD and healthy skin showed IL-31R expression at higher levels on epidermal keratinocytes in AD samples. Infiltrating cells, more numerous in skin from patients with AD compared with that of healthy individuals, expressed IL-31 mRNA. IL-31 may participate in the cause of itch sensation and promote scratching behavior in NC/Nga mice with atopic dermatitis, and may represent a novel target for antipruritic drug development.

CHROMOSOMAL LOCATION

Genetic locus: IL31 (human) mapping to 12q24.31.

SOURCE

IL-31 (N-16) is an affinity purified goat polyclonal antibody raised against a peptide mapping within an internal region of IL-31 of human origin.

PRODUCT

Each vial contains 100 µg IgG in 1.0 ml of PBS with < 0.1% sodium azide and 0.1% gelatin.

Blocking peptide available for competition studies, sc-47073 P, (100 µg peptide in 0.5 ml PBS containing < 0.1% sodium azide and 0.2% BSA).

STORAGE

Store at 4° C, ****DO NOT FREEZE****. Stable for one year from the date of shipment. Non-hazardous. No MSDS required.

APPLICATIONS

IL-31 (N-16) is recommended for detection of IL-31 of human origin by Western Blotting (starting dilution 1:200, dilution range 1:100-1:1000), immunoprecipitation [1-2 µg per 100-500 µg of total protein (1 ml of cell lysate)], immunofluorescence (starting dilution 1:50, dilution range 1:50-1:500) and solid phase ELISA (starting dilution 1:30, dilution range 1:30-1:3000).

Suitable for use as control antibody for IL-31 siRNA (h): sc-60838, IL-31 shRNA Plasmid (h): sc-60838-SH and IL-31 shRNA (h) Lentiviral Particles: sc-60838-V.

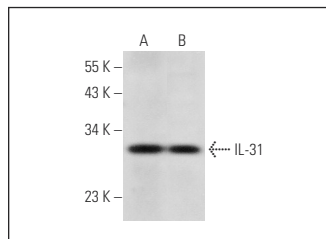
Molecular Weight of IL-31: 18 kDa.

Positive Controls: human spleen extract: sc-363779 or human colon extract: sc-363757.

RECOMMENDED SECONDARY REAGENTS

To ensure optimal results, the following support (secondary) reagents are recommended: 1) Western Blotting: use donkey anti-goat IgG-HRP: sc-2020 (dilution range: 1:2000-1:100,000) or Cruz Marker™ compatible donkey anti-goat IgG-HRP: sc-2033 (dilution range: 1:2000-1:5000), Cruz Marker™ Molecular Weight Standards: sc-2035, TBS Blotto A Blocking Reagent: sc-2333 and Western Blotting Luminol Reagent: sc-2048. 2) Immunoprecipitation: use Protein A/G PLUS-Agarose: sc-2003 (0.5 ml agarose/2.0 ml). 3) Immunofluorescence: use donkey anti-goat IgG-FITC: sc-2024 (dilution range: 1:100-1:400) or donkey anti-goat IgG-TR: sc-2783 (dilution range: 1:100-1:400) with UltraCruz™ Mounting Medium: sc-24941.

DATA



IL-31 (N-16): sc-47073. Western blot analysis of IL-31 expression in human spleen (A) and human colon (B) tissue extracts.

RESEARCH USE

For research use only, not for use in diagnostic procedures.

PROTOCOLS

See our web site at www.scbt.com or our catalog for detailed protocols and support products.

MONOS
Satisfaction
Guaranteed

Try **IL-31 (E-2): sc-515415**, our highly recommended monoclonal alternative to IL-31 (N-16).