

OA1 (K-16): sc-47258

BACKGROUND

G protein-coupled receptors (GPRs or GPCRs), are members of the largest protein family and play a role in many different stimulus-response pathways. G protein-coupled receptors mediate extracellular signals into intracellular signals (G protein-activation). They respond to a great variety of signaling molecules, including hormones, neurotransmitters and other proteins and peptides. GPR143, also designated ocular albinism type 1 protein (OA1), is detected exclusively in pigment cells. OA1, which is a multi-pass membrane protein, is a melanosomal protein expressed primarily in pigment cells. Defects in the gene encoding for OA1 cause ocular albinism, an X-linked disorder mainly characterized by retinal hypopigmentation and visual impairment.

REFERENCES

1. Schiaffino, M.V., et al. 1996. Analysis of the OA1 gene reveals mutations in only one-third of patients with X-linked ocular albinism. *Hum. Mol. Genet.* 4: 2319-2325.
2. Schiaffino, M.V., et al. 1999. Ocular albinism: eviden system. *Nat. Genet.* 23: 108-112.
3. Oetting, W.S. and King, R.A. 1999. Molecular basis of albinism: mutations and polymorphisms of pigmentation genes associated with albinism. *Hum. Mutat.* 13: 99-115.
4. Rosenberg, T. and Schwartz, M. 1999. X-linked ocular albinism: prevalence and mutations—a national study. *Eur. J. Hum. Genet.* 6: 570-577.
5. Bassi, M.T., et al. 2001. Diverse prevalence of large deletions within the OA1 gene in ocular albinism type 1 patients from Europe and North America. *Hum. Genet.* 108: 51-54.
6. Oetting, W.S. 2002. New insights into ocular albinism type 1 (OA1): mutations and polymorphisms of the OA1 gene. *Hum. Mutat.* 19: 85-92.

CHROMOSOMAL LOCATION

Genetic locus: GPR143 (human) mapping to Xp22.2; Gpr143 (mouse) mapping to X F3.

SOURCE

OA1 (K-16) is an affinity purified goat polyclonal antibody raised against a peptide mapping near the N-terminus of OA1 of mouse origin.

PRODUCT

Each vial contains 200 µg IgG in 1.0 ml of PBS with < 0.1% sodium azide and 0.1% gelatin.

Blocking peptide available for competition studies, sc-47258 P, (100 µg peptide in 0.5 ml PBS containing < 0.1% sodium azide and 0.2% BSA).

STORAGE

Store at 4° C, **DO NOT FREEZE**. Stable for one year from the date of shipment. Non-hazardous. No MSDS required.

RESEARCH USE

For research use only, not for use in diagnostic procedures.

APPLICATIONS

OA1 (K-16) is recommended for detection of OA1 of mouse and, to a lesser extent, human origin by Western Blotting (starting dilution 1:200, dilution range 1:100-1:1000), immunoprecipitation [1-2 µg per 100-500 µg of total protein (1 ml of cell lysate)], immunofluorescence (starting dilution 1:50, dilution range 1:50-1:500) and solid phase ELISA (starting dilution 1:30, dilution range 1:30-1:3000).

Suitable for use as control antibody for OA1 siRNA (h): sc-61239, OA1 siRNA (m): sc-61240, OA1 shRNA Plasmid (h): sc-61239-SH, OA1 shRNA Plasmid (m): sc-61240-SH, OA1 shRNA (h) Lentiviral Particles: sc-61239-V and OA1 shRNA (m) Lentiviral Particles: sc-61240-V.

Molecular Weight of OA1 glycoprotein: 60 kDa.

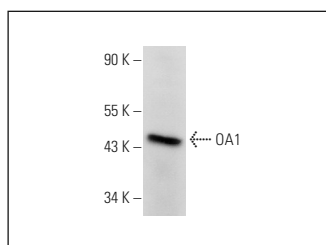
Molecular Weight of OA1 unglycosylated precursor: 45-48 kDa.

Positive Controls: mouse brain extract: sc-2253.

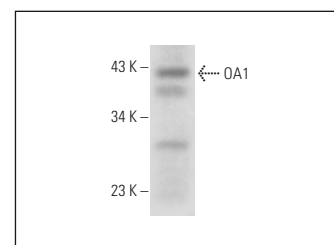
RECOMMENDED SECONDARY REAGENTS

To ensure optimal results, the following support (secondary) reagents are recommended: 1) Western Blotting: use donkey anti-goat IgG-HRP: sc-2020 (dilution range: 1:2000-1:100,000) or Cruz Marker™ compatible donkey anti-goat IgG-HRP: sc-2033 (dilution range: 1:2000-1:5000), Cruz Marker™ Molecular Weight Standards: sc-2035, TBS Blotto A Blocking Reagent: sc-2333 and Western Blotting Luminol Reagent: sc-2048. 2) Immunoprecipitation: use Protein A/G PLUS-Agarose: sc-2003 (0.5 ml agarose/2.0 ml). 3) Immunofluorescence: use donkey anti-goat IgG-FITC: sc-2024 (dilution range: 1:100-1:400) or donkey anti-goat IgG-TR: sc-2783 (dilution range: 1:100-1:400) with UltraCruz™ Mounting Medium: sc-24941.

DATA



OA1 (K-16): sc-47258. Western blot analysis of OA1 expression in mouse brain tissue extract.



OA1 (K-16): sc-47258. Western blot analysis of OA1 expression in human prostate tissue extract.

PROTOCOLS

See our web site at www.scbt.com or our catalog for detailed protocols and support products.

MONOS
Satisfaction
Guaranteed

Try **OA1 (C-6): sc-398602**, our highly recommended monoclonal alternative to OA1 (K-16).