

RFC-1 (C-17): sc-47357

BACKGROUND

Reduced folate carrier protein (RFC-1), also designated folate transporter 1, placental folate transporter (FOLT), or intestinal folate carrier (IFC-1), is a multi-pass membrane protein that acts as a transporter for folate intake. In human placental choriocarcinoma cells, folate intake occurs via potocytosis, a mechanism that couples three components: folate receptor, folate transporter and a H⁺-pump. RFC-1 is a heavily glycosylated protein that is primarily detected in liver and placenta. RFC-1 mediates the uptake of methotrexate (MTX), the antifolate drug widely used as both an anticancer chemotherapeutic drug and as an immunosuppressive agent. MTX mimics natural folates to inhibit critical cellular biosynthetic pathways.

REFERENCES

1. Moscow, J.A., et al. 1995. Isolation of a gene encoding a human reduced folate carrier (RFC1) and analysis of its expression in transport-deficient, methotrexate-resistant human breast cancer cells. *Cancer Res.* 55: 3790-3794.
2. Prasad, P.D., et al. 1995. Molecular cloning of the human placental folate transporter. *Biochem. Biophys. Res. Commun.* 206: 681-687.
3. Wong, S.C., et al. 1995. Isolation of human cDNAs that restore methotrexate sensitivity and reduced folate carrier activity in methotrexate transport-defective Chinese hamster ovary cells. *J. Biol. Chem.* 270: 17468-17475.
4. Chiao, J.H., et al. 1997. RFC-1 gene expression regulates folate absorption in mouse small intestine. *J. Biol. Chem.* 272: 11165-11170.
5. Moscow, J.A. 1998. Methotrexate transport and resistance. *Leuk. Lymphoma* 30: 215-224.

CHROMOSOMAL LOCATION

Genetic locus: SLC19A1 (human) mapping to 21q22.3.

SOURCE

RFC-1 (C-17) is an affinity purified goat polyclonal antibody raised against a peptide mapping near the C-terminus of RFC-1 of human origin.

PRODUCT

Each vial contains 200 µg IgG in 1.0 ml of PBS with < 0.1% sodium azide and 0.1% gelatin.

Blocking peptide available for competition studies, sc-47357 P, (100 µg peptide in 0.5 ml PBS containing < 0.1% sodium azide and 0.2% BSA).

STORAGE

Store at 4° C, ****DO NOT FREEZE****. Stable for one year from the date of shipment. Non-hazardous. No MSDS required.

PROTOCOLS

See our web site at www.scbt.com or our catalog for detailed protocols and support products.

APPLICATIONS

RFC-1 (C-17) is recommended for detection of RFC-1 of human origin by Western Blotting (starting dilution 1:200, dilution range 1:100-1:1000), immunofluorescence (starting dilution 1:50, dilution range 1:50-1:500), immunohistochemistry (including paraffin-embedded sections) (starting dilution 1:50, dilution range 1:50-1:500) and solid phase ELISA (starting dilution 1:30, dilution range 1:30-1:3000).

Suitable for use as control antibody for RFC-1 siRNA (h): sc-61462, RFC-1 shRNA Plasmid (h): sc-61462-SH and RFC-1 shRNA (h) Lentiviral Particles: sc-61462-V.

Molecular Weight of human RFC-1: 58 kDa.

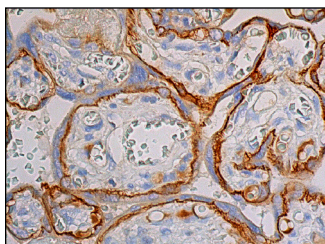
Molecular Weight of glycosylated RFC-1: 92 kDa.

Molecular Weight of mouse RFC-1 isoforms: 58/54/43 kDa.

RECOMMENDED SECONDARY REAGENTS

To ensure optimal results, the following support (secondary) reagents are recommended: 1) Western Blotting: use donkey anti-goat IgG-HRP: sc-2020 (dilution range: 1:2000-1:100,000) or Cruz Marker™ compatible donkey anti-goat IgG-HRP: sc-2033 (dilution range: 1:2000-1:5000), Cruz Marker™ Molecular Weight Standards: sc-2035, TBS Blotto A Blocking Reagent: sc-2333 and Western Blotting Luminol Reagent: sc-2048. 2) Immunofluorescence: use donkey anti-goat IgG-FITC: sc-2024 (dilution range: 1:100-1:400) or donkey anti-goat IgG-TR: sc-2783 (dilution range: 1:100-1:400) with UltraCruz™ Mounting Medium: sc-24941. 3) Immunohistochemistry: use ImmunoCruz™: sc-2053 or ABC: sc-2023 goat IgG Staining Systems.

DATA



RFC-1 (C-17): sc-47357. Immunoperoxidase staining of formalin fixed, paraffin-embedded human placenta tissue showing membrane staining of trophoblastic cells.

RESEARCH USE

For research use only, not for use in diagnostic procedures.

MONOS
Satisfaction
Guaranteed

Try **RFC-1 (D-4): sc-390948**, our highly recommended monoclonal alternative to RFC-1 (C-17).