

# RFC-1 (C-19): sc-47358

## BACKGROUND

Reduced folate carrier protein (RFC-1), also designated folate transporter 1, placental folate transporter (FOLT), or intestinal folate carrier (IFC-1), is a multi-pass membrane protein that acts as a transporter for folate intake. In human placental choriocarcinoma cells, folate intake occurs via potocytosis, a mechanism that couples three components: folate receptor, folate transporter and a H<sup>+</sup>-pump. RFC-1 is a heavily glycosylated protein that is primarily detected in liver and placenta. RFC-1 mediates the uptake of methotrexate (MTX), the antifolate drug widely used as both an anticancer chemotherapeutic drug and as an immunosuppressive agent. MTX mimics natural folates to inhibit critical cellular biosynthetic pathways.

## REFERENCES

1. Moscow, J.A., et al. 1995. Isolation of a gene encoding a human reduced folate carrier (RFC1) and analysis of its expression in transport-deficient, methotrexate-resistant human breast cancer cells. *Cancer Res.* 55: 3790-3794.
2. Prasad, P.D., et al. 1995. Molecular cloning of the human placental folate transporter. *Biochem. Biophys. Res. Commun.* 206: 681-687.

## CHROMOSOMAL LOCATION

Genetic locus: Slc19a1 (mouse) mapping to 10 C1.

## SOURCE

RFC-1 (C-19) is an affinity purified goat polyclonal antibody raised against a peptide mapping at the C-terminus of RFC-1 of mouse origin.

## PRODUCT

Each vial contains 200 µg IgG in 1.0 ml of PBS with < 0.1% sodium azide and 0.1% gelatin.

Blocking peptide available for competition studies, sc-47358 P, (100 µg peptide in 0.5 ml PBS containing < 0.1% sodium azide and 0.2% BSA).

## APPLICATIONS

RFC-1 (C-19) is recommended for detection of RFC-1 of mouse and, to a lesser extent, rat origin by Western Blotting (starting dilution 1:200, dilution range 1:100-1:1000), immunoprecipitation [1-2 µg per 100-500 µg of total protein (1 ml of cell lysate)], immunofluorescence (starting dilution 1:50, dilution range 1:50-1:500) and solid phase ELISA (starting dilution 1:30, dilution range 1:30-1:3000).

Suitable for use as control antibody for RFC-1 siRNA (m): sc-37632, RFC-1 shRNA Plasmid (m): sc-37632-SH and RFC-1 shRNA (m) Lentiviral Particles: sc-37632-V.

Molecular Weight of human RFC-1: 58 kDa.

Molecular Weight of glycosylated RFC-1: 92 kDa.

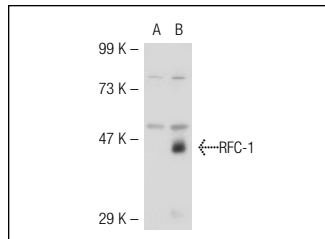
Molecular Weight of mouse RFC-1 isoforms: 58/54/43 kDa.

Positive Controls: RFC1 (m): 293T Lysate: sc-123083.

## RECOMMENDED SECONDARY REAGENTS

To ensure optimal results, the following support (secondary) reagents are recommended: 1) Western Blotting: use donkey anti-goat IgG-HRP: sc-2020 (dilution range: 1:2000-1:100,000) or Cruz Marker™ compatible donkey anti-goat IgG-HRP: sc-2033 (dilution range: 1:2000-1:5000), Cruz Marker™ Molecular Weight Standards: sc-2035, TBS Blotto A Blocking Reagent: sc-2333 and Western Blotting Luminol Reagent: sc-2048. 2) Immunoprecipitation: use Protein A/G PLUS-Agarose: sc-2003 (0.5 ml agarose/2.0 ml). 3) Immunofluorescence: use donkey anti-goat IgG-FITC: sc-2024 (dilution range: 1:100-1:400) or donkey anti-goat IgG-TR: sc-2783 (dilution range: 1:100-1:400) with UltraCruz™ Mounting Medium: sc-24941.

## DATA



RFC-1 (C-19): sc-47358. Western blot analysis of RFC-1 expression in non-transfected: sc-117752 (A) and mouse RFC-1 transfected: sc-123083 (B) 293T whole cell lysates.

## SELECT PRODUCT CITATIONS

1. Cherukad, J., et al. 2012. Spatial and temporal expression of folate-related transporters and metabolic enzymes during mouse placental development. *Placenta* 33: 440-448.

## STORAGE

Store at 4° C, \*\*DO NOT FREEZE\*\*. Stable for one year from the date of shipment. Non-hazardous. No MSDS required.

## RESEARCH USE

For research use only, not for use in diagnostic procedures.

## PROTOCOLS

See our web site at [www.scbt.com](http://www.scbt.com) or our catalog for detailed protocols and support products.

**MONOS**  
Satisfaction  
Guaranteed

Try **RFC-1 (D-6): sc-271276**, our highly recommended monoclonal alternative to RFC-1 (C-19).