

# Siglec-5 (K-19): sc-47411

## BACKGROUND

Two families of mammalian lectin-like adhesion molecules bind glycoconjugate ligands in a sialic acid-dependent manner: the selectins and the sialoadhesins. The sialic acid-binding immunoglobulin superfamily lectins, designated Siglecs or sialoadhesins, are immunoglobulin superfamily members recognizing sialylated ligands. Siglec-5 binds equally to  $\alpha$ 2,3-linked and  $\alpha$ 2,6-linked sialic acid. Four isoforms of hSiglec-5 exist, possessing three (hSiglec-5-3L and -3C) or four (hSiglec-5-4L and -4S) extracellular domains linked to long (hSiglec-5-3L and -4L) or short (hSiglec-5-4S) cytoplasmic tails or existing as a soluble isoform (hSiglec-5-3C). Siglec-5 is expressed by monocytes and neutrophils, but is absent from leukemic cell lines representing early stages of myelomonocytic differentiation. Siglec-5 may play a role in the diagnosis and monitoring of acute myeloid leukemia (AML).

## CHROMOSOMAL LOCATION

Genetic locus: SIGLEC5 (human) mapping to 19q13.41.

## SOURCE

Siglec-5 (K-19) is an affinity purified goat polyclonal antibody raised against a peptide mapping within a C-terminal cytoplasmic domain of Siglec-5 of human origin.

## PRODUCT

Each vial contains 200  $\mu$ g IgG in 1.0 ml of PBS with < 0.1% sodium azide and 0.1% gelatin.

Blocking peptide available for competition studies, sc-47411 P, (100  $\mu$ g peptide in 0.5 ml PBS containing < 0.1% sodium azide and 0.2% BSA).

## STORAGE

Store at 4° C, **\*\*DO NOT FREEZE\*\***. Stable for one year from the date of shipment. Non-hazardous. No MSDS required.

## APPLICATIONS

Siglec-5 (K-19) is recommended for detection of Siglec-5 of human origin by Western Blotting (starting dilution 1:200, dilution range 1:100-1:1000), immunoprecipitation [1-2  $\mu$ g per 100-500  $\mu$ g of total protein (1 ml of cell lysate)], immunofluorescence (starting dilution 1:50, dilution range 1:50-1:500) and solid phase ELISA (starting dilution 1:30, dilution range 1:30-1:3000).

Suitable for use as control antibody for Siglec-5 siRNA (h): sc-61549, Siglec-5 siRNA (m): sc-61550, Siglec-5 shRNA Plasmid (h): sc-61549-SH, Siglec-5 shRNA Plasmid (m): sc-61550-SH, Siglec-5 shRNA (h) Lentiviral Particles: sc-61549-V and Siglec-5 shRNA (m) Lentiviral Particles: sc-61550-V.

Molecular Weight of Siglec-5 dimer: 140 kDa.

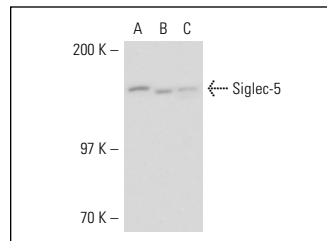
Molecular Weight of Siglec-5 monomer: 70 kDa.

Positive Controls: AML-193 whole cell lysate: sc-364182 or HL-60 whole cell lysate: sc-2209.

## RECOMMENDED SECONDARY REAGENTS

To ensure optimal results, the following support (secondary) reagents are recommended: 1) Western Blotting: use donkey anti-goat IgG-HRP: sc-2020 (dilution range: 1:2000-1:100,000) or Cruz Marker™ compatible donkey anti-goat IgG-HRP: sc-2033 (dilution range: 1:2000-1:5000), Cruz Marker™ Molecular Weight Standards: sc-2035, TBS Blotto A Blocking Reagent: sc-2333 and Western Blotting Luminol Reagent: sc-2048. 2) Immunoprecipitation: use Protein A/G PLUS-Agarose: sc-2003 (0.5 ml agarose/2.0 ml). 3) Immunofluorescence: use donkey anti-goat IgG-FITC: sc-2024 (dilution range: 1:100-1:400) or donkey anti-goat IgG-TR: sc-2783 (dilution range: 1:100-1:400) with UltraCruz™ Mounting Medium: sc-24941.

## DATA



Siglec-5 (K-19): sc-47411. Western blot analysis of Siglec-5 expression in M1 (A), AML-193 (B) and HL-60 (C) whole cell lysates.

## RESEARCH USE

For research use only, not for use in diagnostic procedures.

## PROTOCOLS

See our web site at [www.scbt.com](http://www.scbt.com) or our catalog for detailed protocols and support products.



Try **Siglec-5 (H-7): sc-377005** or **Siglec-5/14 (C-2): sc-374584**, our highly recommended monoclonal alternatives to Siglec-5 (K-19).