

Supervillin (N-15): sc-47434

BACKGROUND

Members of the Gelsolin superfamily play a role in Actin filament remodeling as well as several other cellular processes, including cell motility, control of apoptosis and regulation of phagocytosis. Supervillin is tightly associated with both Actin filaments and plasma membrane and may participate in cell growth, adhesion and motility. Supervillin is ubiquitously expressed. A form of Supervillin is expressed in non-muscle cells, where it can activate androgen receptor activity. In muscle, Supervillin is expressed as an isoform, designated archvillin, that contributes to myogenic membrane structures and differentiation.

REFERENCES

1. Pestonjamas, K.N., et al. 1997. Supervillin (p205): A novel membrane-associated, F-Actin-binding protein in the villin/gelsolin superfamily. *J. Cell Biol.* 139: 1255-1269.
2. Pope, R.K., et al. 1998. Cloning, characterization, and chromosomal localization of human supervillin (SVIL). *Genomics* 52: 342-351.
3. Ting, H.J., et al. 2002. Supervillin associates with androgen receptor and modulates its transcriptional activity. *Proc. Natl. Acad. Sci. USA* 99: 661-666.
4. Oh, S.W., et al. 2003. Archvillin, a muscle-specific isoform of Supervillin, is an early expressed component of the costameric membrane skeleton. *J. Cell Sci.* 116: 2261-2275.
5. Silacci, P., et al. 2004. Gelsolin superfamily proteins: key regulators of cellular functions. *Cell. Mol. Life Sci.* 61: 2614-2623.
6. Archer, S.K., et al. 2004. The flightless I protein and the gelsolin family in nuclear hormone receptor-mediated signalling. *Biochem. Soc. Trans.* 32: 940-942.
7. Gangopadhyay, S.S., et al. 2004. Smooth muscle archvillin: a novel regulator of signaling and contractility in vascular smooth muscle. *J. Cell Sci.* 117: 5043-5057.
8. Ting, H.J., et al. 2004. Actin monomer enhances Supervillin-modulated androgen receptor transactivation. *Biochem. Biophys. Res. Commun.* 319: 393-396.

CHROMOSOMAL LOCATION

Genetic locus: SVIL (human) mapping to 10p11.23; Svl (mouse) mapping to 18 A1.

SOURCE

Supervillin (N-15) is an affinity purified goat polyclonal antibody raised against a peptide mapping near the N-terminus of Supervillin of human origin.

PRODUCT

Each vial contains 200 µg IgG in 1.0 ml of PBS with < 0.1% sodium azide and 0.1% gelatin.

Blocking peptide available for competition studies, sc-47434 P, (100 µg peptide in 0.5 ml PBS containing < 0.1% sodium azide and 0.2% BSA).

APPLICATIONS

Supervillin (N-15) is recommended for detection of Supervillin of mouse, rat and human origin by Western Blotting (starting dilution 1:200, dilution range 1:100-1:1000), immunoprecipitation [1-2 µg per 100-500 µg of total protein (1 ml of cell lysate)], immunofluorescence (starting dilution 1:50, dilution range 1:50-1:500) and solid phase ELISA (starting dilution 1:30, dilution range 1:30-1:3000).

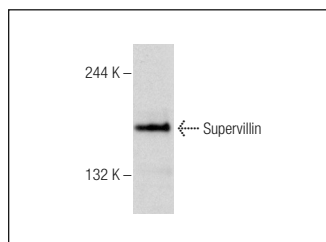
Suitable for use as control antibody for Supervillin siRNA (h): sc-61624, Supervillin siRNA (m): sc-61625, Supervillin shRNA Plasmid (h): sc-61624-SH, Supervillin shRNA Plasmid (m): sc-61625-SH, Supervillin shRNA (h) Lentiviral Particles: sc-61624-V and Supervillin shRNA (m) Lentiviral Particles: sc-61625-V.

Molecular Weight (predicted) of Supervillin isoforms p250/p205: 248/201 kDa.

Molecular Weight (observed) of Supervillin: 169-200 kDa.

Positive Controls: Jurkat whole cell lysate: sc-2204, mouse hypothalamus extract: sc-364242 or A549 cell lysate: sc-2413.

DATA



Supervillin (N-15): sc-47434. Western blot analysis of Supervillin expression in mouse hypothalamus tissue extract.

STORAGE

Store at 4° C, ****DO NOT FREEZE****. Stable for one year from the date of shipment. Non-hazardous. No MSDS required.

RESEARCH USE

For research use only, not for use in diagnostic procedures.

PROTOCOLS

See our web site at www.scbt.com or our catalog for detailed protocols and support products.


 MONOS
Satisfaction
Guaranteed

Try **Supervillin (B8C1): sc-53556** or **Supervillin (A-12): sc-393135**, our highly recommended monoclonal alternatives to Supervillin (N-15).