

TAUT (C-18): sc-47451



The Power to Question

BACKGROUND

Taurine is an abundant organic osmolyte that possesses antioxidant and immunomodulatory properties and plays a role in cell volume homeostasis. Taurine is taken up into cells via the taurine transporter (TAUT). TAUT, which is sodium- and chloride-dependent, is a multi-pass membrane protein belonging to the sodium neurotransmitter symporter (SNF) family of proteins. TNF α upregulates TAUT expression, while phosphorylation on Serine 322 down-regulates it. Overexpression of TAUT protects renal cells from cisplatin-induced nephrotoxicity.

REFERENCES

1. Jhiang, S.M., Fithian, L., Smanik, P., McGill, J., Tong, Q. and Mazzaferri, E.L. 1993. Cloning of the human taurine transporter and characterization of taurine uptake in thyroid cells. *FEBS Lett.* 318: 139-144.
2. Ramamoorthy, S., Leibach, F.H., Mahesh, V.B., Han, H., Yang-Feng, T., Blakely, R.D. and Ganapathy, V. 1994. Functional characterization and chromosomal localization of a cloned taurine transporter from human placenta. *Biochem. J.* 300: 893-900.
3. Miyamoto, Y., Liou, G.I. and Sprinkle, T.J. 1996. Isolation of a cDNA encoding a taurine transporter in the human retinal pigment epithelium. *Curr. Eye Res.* 15: 345-349.
4. Takasaki, M., Satsu, H. and Shimizu, M. 2004. Physiological significance of the taurine transporter and taurine biosynthetic enzymes in 3T3-L1 adipocytes. *Biofactors* 21: 419-421.
5. Voss, J.W., Pedersen, S.F., Christensen, S.T. and Lambert, I.H. 2004. Regulation of the expression and subcellular localization of the taurine transporter TAUT in mouse NIH/3T3 fibroblasts. *Eur. J. Biochem.* 271: 4646-4658.
6. Friedrich, B., Alexander, D., Aicher, W.K., Duszenko, M., Schaub, T.P., Passlick-Deetjen, J., Waldegger, S., Wolf, S., Risler, T. and Lang, F. 2005. Influence of standard haemodialysis treatment on transcription of human serum- and glucocorticoid-inducible kinase SGK1 and taurine transporter TAUT in blood leukocytes. *Nephrol. Dial. Transplant.* 20: 768-774.

CHROMOSOMAL LOCATION

Genetic locus: SLC6A6 (human) mapping to 3p25.1; Slc6a6 (mouse) mapping to 6 D1.

SOURCE

TAUT (C-18) is an affinity purified goat polyclonal antibody raised against a peptide mapping within an internal region of TAUT of human origin.

PRODUCT

Each vial contains 200 μ g IgG in 1.0 ml of PBS with < 0.1% sodium azide and 0.1% gelatin.

Blocking peptide available for competition studies, sc-47451 P, (100 μ g peptide in 0.5 ml PBS containing < 0.1% sodium azide and 0.2% BSA).

APPLICATIONS

TAUT (C-18) is recommended for detection of TAUT of mouse, rat and human origin by Western Blotting (starting dilution 1:200, dilution range 1:100-1:1000), immunoprecipitation [1-2 μ g per 100-500 μ g of total protein (1 ml of cell lysate)], immunofluorescence (starting dilution 1:50, dilution range 1:50-1:500) and solid phase ELISA (starting dilution 1:30, dilution range 1:30-1:3000).

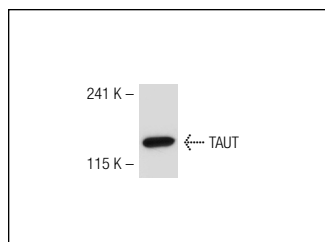
TAUT (C-18) is also recommended for detection of TAUT in additional species, including canine, bovine, porcine and avian.

Suitable for use as control antibody for TAUT siRNA (h): sc-61648, TAUT siRNA (m): sc-61649, TAUT shRNA Plasmid (h): sc-61648-SH, TAUT shRNA Plasmid (m): sc-61649-SH, TAUT shRNA (h) Lentiviral Particles: sc-61648-V and TAUT shRNA (m) Lentiviral Particles: sc-61649-V.

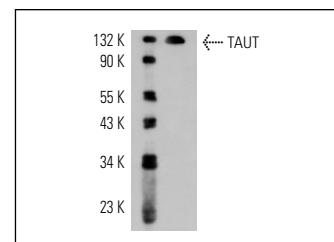
Molecular Weight of TAUT isoforms: 49-132 kDa.

Positive Controls: Jurkat whole cell lysate: sc-2204, ARPE-19 whole cell lysate: sc-364357 or Y79 cell lysate: sc-2240.

DATA



TAUT (C-18): sc-47451. Western blot analysis of TAUT expression in Jurkat whole cell lysate.



TAUT (C-18): sc-47451. Western blot analysis of TAUT expression in Jurkat whole cell lysate.

STORAGE

Store at 4° C, ****DO NOT FREEZE****. Stable for one year from the date of shipment. Non-hazardous. No MSDS required.

RESEARCH USE

For research use only, not for use in diagnostic procedures.

PROTOCOLS

See our web site at www.scbt.com or our catalog for detailed protocols and support products.



Try **TAUT (A-11): sc-393036** or **TAUT (E-10): sc-166640**, our highly recommended monoclonal alternatives to TAUT (C-18).