

γ -taxilin (N-14): sc-47462

BACKGROUND

γ -taxilin (also called lipopolysaccharide-specific response protein 5) is ubiquitously expressed, with an especially high level of expression in heart and skeletal muscle. γ -taxilin displays known expression in brain, placenta, lung, liver, kidney and pancreas. Taxilin family members β - and γ -taxilin bind to the α subunit of the nascent polypeptide-associated complex (NAC) and affect its nuclear distribution, suggesting that the taxilin family is involved not only in the translational process through its interaction with NAC but also in the transcriptional process through its interaction with α NAC alone.

REFERENCES

1. Nogami, S., et al. 2003. Interaction of taxilin with syntaxin which does not form the SNARE complex. *Biochem. Biophys. Res. Commun.* 311: 797-802.
2. Nogami, S., et al. 2003. Taxilin; a novel syntaxin-binding protein that is involved in Ca^{2+} -dependent exocytosis in neuroendocrine cells. *Genes Cells* 8: 17-28.
3. Nogami, S., et al. 2004. Identification and characterization of taxilin isoforms. *Biochem. Biophys. Res. Commun.* 319: 936-943.
4. Yoshida, K., et al. 2005. Interaction of the taxilin family with the nascent polypeptide-associated complex that is involved in the transcriptional and translational processes. *Genes Cells* 10: 465-476.
5. Malyala, A., et al. 2005. Estrogen modulation of hypothalamic neurons: activation of multiple signaling pathways and gene expression changes. *Steroids* 70: 397-406.
6. Yu, V.W., et al. 2006. Inhibition of ATF4 transcriptional activity by FIAT/ γ -taxilin modulates bone mass accrual. *Ann. N.Y. Acad. Sci.* 1068: 131-142.

CHROMOSOMAL LOCATION

Genetic locus: TXLNG (human) mapping to Xp22.2; Txlng (mouse) mapping to X F4.

SOURCE

γ -taxilin (N-14) is an affinity purified goat polyclonal antibody raised against a peptide mapping near the N-terminus of γ -taxilin of human origin.

PRODUCT

Each vial contains 200 μ g IgG in 1.0 ml of PBS with < 0.1% sodium azide and 0.1% gelatin.

Blocking peptide available for competition studies, sc-47462 P, (100 μ g peptide in 0.5 ml PBS containing < 0.1% sodium azide and 0.2% BSA).

STORAGE

Store at 4° C, ****DO NOT FREEZE****. Stable for one year from the date of shipment. Non-hazardous. No MSDS required.

PROTOCOLS

See our web site at www.scbt.com or our catalog for detailed protocols and support products.

APPLICATIONS

γ -taxilin (N-14) is recommended for detection of γ -taxilin of human and, to a lesser extent, mouse and rat origin by Western Blotting (starting dilution 1:200, dilution range 1:100-1:1000), immunoprecipitation [1-2 μ g per 100-500 μ g of total protein (1 ml of cell lysate)], immunofluorescence (starting dilution 1:50, dilution range 1:50-1:500) and solid phase ELISA (starting dilution 1:30, dilution range 1:30-1:3000).

γ -taxilin (N-14) is also recommended for detection of γ -taxilin in additional species, including equine, canine and bovine.

Suitable for use as control antibody for γ -taxilin siRNA (h): sc-61650, γ -taxilin siRNA (m): sc-61652, γ -taxilin shRNA Plasmid (h): sc-61650-SH, γ -taxilin shRNA Plasmid (m): sc-61652-SH, γ -taxilin shRNA (h) Lentiviral Particles: sc-61650-V and γ -taxilin shRNA (m) Lentiviral Particles: sc-61652-V.

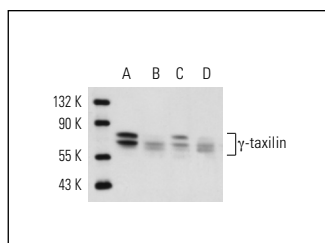
Molecular Weight of γ -taxilin: 70 kDa.

Positive Controls: HeLa nuclear extract: sc-2120, MCF7 nuclear extract: sc-2149 or SW480 nuclear extract: sc-2155.

RECOMMENDED SECONDARY REAGENTS

To ensure optimal results, the following support (secondary) reagents are recommended: 1) Western Blotting: use donkey anti-goat IgG-HRP: sc-2020 (dilution range: 1:2000-1:100,000) or Cruz Marker™ compatible donkey anti-goat IgG-HRP: sc-2033 (dilution range: 1:2000-1:5000), Cruz Marker™ Molecular Weight Standards: sc-2035, TBS Blotto A Blocking Reagent: sc-2333 and Western Blotting Luminol Reagent: sc-2048. 2) Immunoprecipitation: use Protein A/G PLUS-Agarose: sc-2003 (0.5 ml agarose/2.0 ml). 3) Immunofluorescence: use donkey anti-goat IgG-FITC: sc-2024 (dilution range: 1:100-1:400) or donkey anti-goat IgG-TR: sc-2783 (dilution range: 1:100-1:400) with UltraCruz™ Mounting Medium: sc-24941.

DATA



γ -taxilin (N-14): sc-47462. Western blot analysis of γ -taxilin expression in HeLa (A), MCF7 (B), SW480 (C) and A-431 (D) nuclear extracts.

RESEARCH USE

For research use only, not for use in diagnostic procedures.