

# Transcobalamin I (M-16): sc-47511

## BACKGROUND

Transcobalamin I (TCI) and Transcobalamin II (TCII) are secreted proteins belonging to the eukaryotic cobalamin transport proteins family and also to the vitamin B12-binding protein family. The genes encoding these proteins map to chromosome 11q12.1 and 22q12.2, respectively. Transcobalamin I is a constituent of secondary granules in neutrophils, while Transcobalamin II binds cobalamin and mediates its transport into cells. These plasma proteins are expressed in various tissues and secretions.

## REFERENCES

1. Kalra, S., Li, N., Yammani, R.R., Seetharam, S. and Seetharam, B. 2004. Cobalamin (vitamin B12) binding, phylogeny and synten of human Transcobalamin. Arch. Biochem. Biophys. 431: 189-196.
2. Cheeramakara, C., Thanomsak, W., Songmeang, K., Nontprasert, A., Sanghirun, C., Suthisai, N. and Areekul, S., et al. 2005. Elevation of serum Transcobalamin II in patients with scrub typhus. Southeast Asian J. Trop. Med. Public Health 36: 113-117.
3. Chen, X., Remacha, A.F, Sardà, M.P. and Carmel, R. 2005. Influence of cobalamin deficiency compared with that of cobalamin absorption on serum holo-Transcobalamin II. Am. J. Clin. Nutr. 81: 110-114.
4. Fedosov, S.N., Orning, L., Løvli, T., Quadros, E.V., Thompson, K., Berglund, L. and Petersen, T.E. 2005. Mapping the functional domains of human Transcobalamin using monoclonal antibodies. FEBS J. 272: 3887-3898.
5. Swanson, D.A., Pangilinan, F., Mills, J.L., Kirke, P.N., Conley, M., Weiler, A., Frey, T., Parle-McDermott, A., O'Leary, V.B., Seltzer, R.R., Moynihan, K.A., Molloy, A.M., Burke, H., Scott, J.M. and Brody, L.C. 2005. Evaluation of Transcobalamin II polymorphisms as neural tube defect risk factors in an Irish population. Birth Defects Res. Part A Clin. Mol. Teratol. 73: 239-244.

## CHROMOSOMAL LOCATION

Genetic locus: TCN1 (human) mapping to 11q12.1.

## SOURCE

Transcobalamin I (M-16) is an affinity purified goat polyclonal antibody raised against a peptide mapping near the N-terminus of Transcobalamin I of human origin.

## PRODUCT

Each vial contains 200 µg IgG in 1.0 ml of PBS with < 0.1% sodium azide and 0.1% gelatin.

Blocking peptide available for competition studies, sc-47511 P, (100 µg peptide in 0.5 ml PBS containing < 0.1% sodium azide and 0.2% BSA).

## STORAGE

Store at 4° C, **\*\*DO NOT FREEZE\*\***. Stable for one year from the date of shipment. Non-hazardous. No MSDS required.

## RESEARCH USE

For research use only, not for use in diagnostic procedures.

## APPLICATIONS

Transcobalamin I (M-16) is recommended for detection of precursor and mature Transcobalamin I of human origin by Western Blotting (starting dilution 1:200, dilution range 1:100-1:1000), immunoprecipitation [1-2 µg per 100-500 µg of total protein (1 ml of cell lysate)], immunofluorescence (starting dilution 1:50, dilution range 1:50-1:500) and solid phase ELISA (starting dilution 1:30, dilution range 1:30-1:3000).

Suitable for use as control antibody for Transcobalamin I siRNA (h): sc-61706, Transcobalamin I shRNA Plasmid (h): sc-61706-SH and Transcobalamin I shRNA (h) Lentiviral Particles: sc-61706-V.

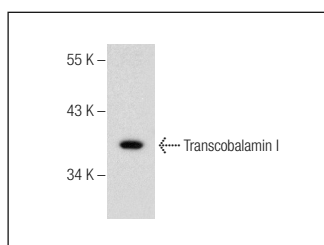
Molecular Weight of Transcobalamin I: 48/38 kDa.

Positive Control: HeLa whole cell lysate: sc-2200.

## RECOMMENDED SECONDARY REAGENTS

To ensure optimal results, the following support (secondary) reagents are recommended: 1) Western Blotting: use donkey anti-goat IgG-HRP: sc-2020 (dilution range: 1:2000-1:100,000) or Cruz Marker™ compatible donkey anti-goat IgG-HRP: sc-2033 (dilution range: 1:2000-1:5000), Cruz Marker™ Molecular Weight Standards: sc-2035, TBS Blotto A Blocking Reagent: sc-2333 and Western Blotting Luminol Reagent: sc-2048. 2) Immunoprecipitation: use Protein A/G PLUS-Agarose: sc-2003 (0.5 ml agarose/2.0 ml). 3) Immunofluorescence: use donkey anti-goat IgG-FITC: sc-2024 (dilution range: 1:100-1:400) or donkey anti-goat IgG-TR: sc-2783 (dilution range: 1:100-1:400) with UltraCruz™ Mounting Medium: sc-24941.

## DATA



Transcobalamin I (M-16): sc-47511. Western blot analysis of Transcobalamin I expression in HeLa whole cell lysate.

## PROTOCOLS

See our web site at [www.scbt.com](http://www.scbt.com) or our catalog for detailed protocols and support products.