

UBE2E1 (C-18): sc-47547

BACKGROUND

The ubiquitin (Ub) pathway involves three sequential enzymatic steps that facilitate the conjugation of Ub and Ub-like molecules to specific protein substrates. The first step requires the ATP-dependent activation of the Ub C-terminus and the assembly of multi-Ub chains by the Ub-activating enzyme known as the E1 component. The Ub chain is then conjugated to the Ub-conjugating enzyme (E2) to generate an intermediate Ub-E2 complex. The Ub-ligase (E3) then catalyzes the transfer of Ub from E2 to the appropriate protein substrate. UBE2E1 and UBE2L3, also designated UBCH6 and UBCH7 respectively in human, are E2 conjugating enzymes that interact with various proteins. Specifically, UBE2E1 interacts with the tumor suppressor protein TSSC5. UBE2L3 has been shown to mediate c-fos degradation, NFκB maturation, human papilloma virus-mediated p53 and Myc protein degradation.

CHROMOSOMAL LOCATION

Genetic locus: UBE2E1/UBE2E2 (human) mapping to 3p24.2; Ube2e1/Ube2e2 (mouse) mapping to 14 A3.

SOURCE

UBE2E1 (C-18) is an affinity purified goat polyclonal antibody raised against a peptide mapping at the C-terminus of UBE2E1 of human origin.

PRODUCT

Each vial contains 200 µg IgG in 1.0 ml of PBS with < 0.1% sodium azide and 0.1% gelatin.

Blocking peptide available for competition studies, sc-47547 P, (100 µg peptide in 0.5 ml PBS containing < 0.1% sodium azide and 0.2% BSA).

STORAGE

Store at 4° C, ****DO NOT FREEZE****. Stable for one year from the date of shipment. Non-hazardous. No MSDS required.

APPLICATIONS

UBE2E1 (C-18) is recommended for detection of UBE2E1 and UBE2E2 of mouse, rat and human origin by Western Blotting (starting dilution 1:200, dilution range 1:100-1:1000), immunoprecipitation [1-2 µg per 100-500 µg of total protein (1 ml of cell lysate)], immunofluorescence (starting dilution 1:50, dilution range 1:50-1:500) and solid phase ELISA (starting dilution 1:30, dilution range 1:30-1:3000); may cross-react with UBE2E3.

UBE2E1 (C-18) is also recommended for detection of UBE2E1 and UBE2E2 in additional species, including equine, canine, bovine, porcine and avian.

Suitable for use as control antibody for UBE2E1 siRNA (h): sc-61744, UBE2E1 siRNA (m): sc-61745, UBE2E1 shRNA Plasmid (h): sc-61744-SH, UBE2E1 shRNA Plasmid (m): sc-61745-SH, UBE2E1 shRNA (h) Lentiviral Particles: sc-61744-V and UBE2E1 shRNA (m) Lentiviral Particles: sc-61745-V.

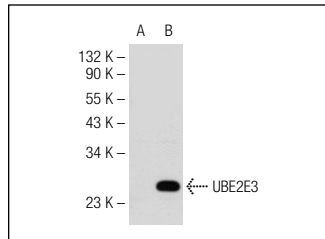
Molecular Weight of UBE2E1: 21-24 kDa.

Positive Controls: UBE2E3 (m): 293T Lysate: sc-127737, UBE2E3 (h): 293T Lysate: sc-111622 or mouse brain extract: sc-2253.

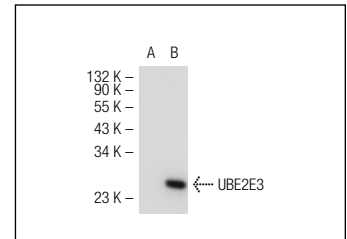
RECOMMENDED SECONDARY REAGENTS

To ensure optimal results, the following support (secondary) reagents are recommended: 1) Western Blotting: use donkey anti-goat IgG-HRP: sc-2020 (dilution range: 1:2000-1:100,000) or Cruz Marker™ compatible donkey anti-goat IgG-HRP: sc-2033 (dilution range: 1:2000-1:5000), Cruz Marker™ Molecular Weight Standards: sc-2035, TBS Blotto A Blocking Reagent: sc-2333 and Western Blotting Luminol Reagent: sc-2048. 2) Immunoprecipitation: use Protein A/G PLUS-Agarose: sc-2003 (0.5 ml agarose/2.0 ml). 3) Immunofluorescence: use donkey anti-goat IgG-FITC: sc-2024 (dilution range: 1:100-1:400) or donkey anti-goat IgG-TR: sc-2783 (dilution range: 1:100-1:400) with UltraCruz™ Mounting Medium: sc-24941.

DATA



UBCH6 (C-18): sc-47547. Western blot analysis of UBE2E3 expression in non-transfected: sc-117752 (A) and mouse UBE2E3 transfected: sc-127737 (B) 293T whole cell lysates.



UBE2E1 (C-18): sc-47547. Western blot analysis of UBE2E3 expression in non-transfected: sc-117752 (A) and human UBE2E3 transfected: sc-111622 (B) 293T whole cell lysates.

RESEARCH USE

For research use only, not for use in diagnostic procedures.

PROTOCOLS

See our web site at www.scbt.com or our catalog for detailed protocols and support products.

MONOS
Satisfaction
Guaranteed

Try **UBE2E1 (42): sc-136113**, our highly recommended monoclonal alternative to UBE2E1 (C-18).