

ARP-1 (M-15): sc-47579

BACKGROUND

COUP (chicken ovalbumin upstream promoter) transcription factors have been cloned in several species and identified as orphan members of the steroid/thyroid hormone receptor superfamily. COUP-TFI (also designated COUP or EAR-3) and ARP-1 (also designated COUP-TFII) exhibit highly regulated and overlapping expression in most tissues. COUP-TFs are highly expressed in the developing and central nervous system, suggesting that these factors may be important in neural development and differentiation. COUP-TFs can compete for binding to response elements which are common to other members of this family, including RAR, RXR, PPAR, HNF-4, VDR and TR. They have been shown to act as negative regulators as well as initiators of transcription.

CHROMOSOMAL LOCATION

Genetic locus: NR2F2 (human) mapping to 15q26.2; Nr2f2 (mouse) mapping to 7 D1.

SOURCE

ARP-1 (M-15) is an affinity purified goat polyclonal antibody raised against a peptide mapping within an internal region of ARP-1 of human origin.

PRODUCT

Each vial contains 200 µg IgG in 1.0 ml of PBS with < 0.1% sodium azide and 0.1% gelatin. Also available as TransCruz reagent for Gel Supershift and ChIP applications, sc-47579 X, 200 µg/0.1 ml.

Blocking peptide available for competition studies, sc-47579 P, (100 µg peptide in 0.5 ml PBS containing < 0.1% sodium azide and 0.2% BSA).

STORAGE

Store at 4° C, ****DO NOT FREEZE****. Stable for one year from the date of shipment. Non-hazardous. No MSDS required.

APPLICATIONS

ARP-1 (M-15) is recommended for detection of ARP-1 of mouse, rat and human origin by Western Blotting (starting dilution 1:200, dilution range 1:100-1:1000), immunoprecipitation [1-2 µg per 100-500 µg of total protein (1 ml of cell lysate)], immunofluorescence (starting dilution 1:50, dilution range 1:50-1:500) and solid phase ELISA (starting dilution 1:30, dilution range 1:30-1:3000); may cross-react with COUP-TFI and EAR2.

ARP-1 (M-15) is also recommended for detection of ARP-1 in additional species, including equine, canine, bovine, porcine and avian.

Suitable for use as control antibody for ARP-1 siRNA (h): sc-38818, ARP-1 siRNA (m): sc-38819, ARP-1 shRNA Plasmid (h): sc-38818-SH, ARP-1 shRNA Plasmid (m): sc-38819-SH, ARP-1 shRNA (h) Lentiviral Particles: sc-38818-V and ARP-1 shRNA (m) Lentiviral Particles: sc-38819-V.

ARP-1 (M-15) X TransCruz antibody is recommended for Gel Supershift and ChIP applications.

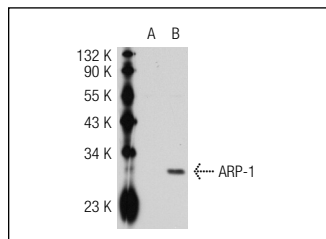
Molecular Weight of ARP-1: 45 kDa.

Positive Controls: ARP-1 (h): 293T Lysate: sc-111675 or Ramos nuclear extract: sc-2153.

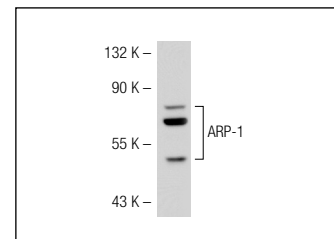
RECOMMENDED SECONDARY REAGENTS

To ensure optimal results, the following support (secondary) reagents are recommended: 1) Western Blotting: use donkey anti-goat IgG-HRP: sc-2020 (dilution range: 1:2000-1:100,000) or Cruz Marker™ compatible donkey anti-goat IgG-HRP: sc-2033 (dilution range: 1:2000-1:5000), Cruz Marker™ Molecular Weight Standards: sc-2035, TBS Blotto A Blocking Reagent: sc-2333 and Western Blotting Luminol Reagent: sc-2048. 2) Immunoprecipitation: use Protein A/G PLUS-Agarose: sc-2003 (0.5 ml agarose/2.0 ml). 3) Immunofluorescence: use donkey anti-goat IgG-FITC: sc-2024 (dilution range: 1:100-1:400) or donkey anti-goat IgG-TR: sc-2783 (dilution range: 1:100-1:400) with UltraCruz™ Mounting Medium: sc-24941.

DATA



ARP-1 (M-15): sc-47579. Western blot analysis of ARP-1 expression in non-transfected: sc-117752 (A) and human ARP-1 transfected: sc-111675 (B) 293T whole cell lysates.



ARP-1 (M-15): sc-47579. Western blot analysis of ARP-1 expression in Ramos nuclear extract.

RESEARCH USE

For research use only, not for use in diagnostic procedures.

PROTOCOLS

See our web site at www.scbt.com or our catalog for detailed protocols and support products.



Try **ARP-1 (E-11): sc-271940** or **ARP-1 (B-2): sc-271265**, our highly recommended monoclonal alternatives to ARP-1 (M-15).