

# MKP-5 (Y-18): sc-47666

## BACKGROUND

Mitogen-activated protein (MAP) kinases are a large class of proteins involved in signal transduction pathways that are activated by a range of stimuli and mediate a number of physiological and pathological changes in the cell. Dual specificity phosphatases (DSPs) are a subclass of the protein tyrosine phosphatase (PTP) gene superfamily, which are selective for dephosphorylating critical phosphothreonine and phosphotyrosine residues within MAP kinases. DSP gene expression is induced by a host of growth factors and/or cellular stresses, thereby negatively regulating MAP kinase superfamily members including MAPK/ERK, SAPK/JNK and p38. MKP-5 preferentially binds to p38, but also to SAPK/JNK. It is ubiquitously expressed and localizes to both the cytoplasm and the nucleus. MKP-5 has been implicated in cell proliferation and apoptosis, tumor invasion and immune responses.

## REFERENCES

1. Keyse, S.M. 1995. An emerging family of dual specificity MAP kinase phosphatases. *Biochim. Biophys. Acta* 1265: 152-160.
2. Sun, H. 1998. Functional studies of dual-specificity phosphatases. *Methods Mol. Biol.* 84: 307-318.

## CHROMOSOMAL LOCATION

Genetic locus: DUSP10 (human) mapping to 1q41; Dusp10 (mouse) mapping to 1 H5.

## SOURCE

MKP-5 (Y-18) is an affinity purified goat polyclonal antibody raised against a peptide mapping within an internal region of MKP-5 of human origin.

## PRODUCT

Each vial contains 200 µg IgG in 1.0 ml of PBS with < 0.1% sodium azide and 0.1% gelatin.

Blocking peptide available for competition studies, sc-47666 P, (100 µg peptide in 0.5 ml PBS containing < 0.1% sodium azide and 0.2% BSA).

## APPLICATIONS

MKP-5 (Y-18) is recommended for detection of MKP-5 of mouse, rat and human origin by Western Blotting (starting dilution 1:200, dilution range 1:100-1:1000), immunofluorescence (starting dilution 1:50, dilution range 1:50-1:500), immunohistochemistry (including paraffin-embedded sections) (starting dilution 1:50, dilution range 1:50-1:500) and solid phase ELISA (starting dilution 1:30, dilution range 1:30-1:3000).

MKP-5 (Y-18) is also recommended for detection of MKP-5 in additional species, including equine, canine, bovine, porcine and avian.

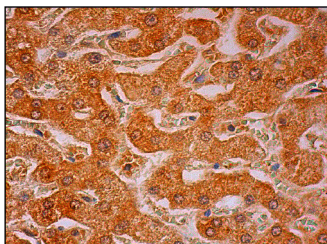
Suitable for use as control antibody for MKP-5 siRNA (h): sc-61048, MKP-5 siRNA (m): sc-61049, MKP-5 shRNA Plasmid (h): sc-61048-SH, MKP-5 shRNA Plasmid (m): sc-61049-SH, MKP-5 shRNA (h) Lentiviral Particles: sc-61048-V and MKP-5 shRNA (m) Lentiviral Particles: sc-61049-V.

Molecular Weight of MKP-5: 53 kDa.

## RECOMMENDED SECONDARY REAGENTS

To ensure optimal results, the following support (secondary) reagents are recommended: 1) Western Blotting: use donkey anti-goat IgG-HRP: sc-2020 (dilution range: 1:2000-1:100,000) or Cruz Marker™ compatible donkey anti-goat IgG-HRP: sc-2033 (dilution range: 1:2000-1:5000), Cruz Marker™ Molecular Weight Standards: sc-2035, TBS Blotto A Blocking Reagent: sc-2333 and Western Blotting Luminol Reagent: sc-2048. 2) Immunofluorescence: use donkey anti-goat IgG-FITC: sc-2024 (dilution range: 1:100-1:400) or donkey anti-goat IgG-TR: sc-2783 (dilution range: 1:100-1:400) with UltraCruz™ Mounting Medium: sc-24941. 3) Immunohistochemistry: use ImmunoCruz™: sc-2053 or ABC: sc-2023 goat IgG Staining Systems.

## DATA



MKP-5 (Y-18): sc-47666. Immunoperoxidase staining of formalin fixed, paraffin-embedded human liver tissue showing cytoplasmic and nuclear staining of hepatocytes.

## STORAGE

Store at 4° C, **\*\*DO NOT FREEZE\*\***. Stable for one year from the date of shipment. Non-hazardous. No MSDS required.

## RESEARCH USE

For research use only, not for use in diagnostic procedures.

## PROTOCOLS

See our web site at [www.scbt.com](http://www.scbt.com) or our catalog for detailed protocols and support products.

**MONOS**  
Satisfaction  
Guaranteed

Try **MKP-5 (G-10): sc-374276**, our highly recommended monoclonal alternative to MKP-5 (Y-18).