

# VHY (S-15): sc-47678

## BACKGROUND

Mitogen-activated protein (MAP) kinases are a large class of proteins involved in signal transduction pathways that are activated by a range of stimuli and mediate a number of physiological and pathological changes in the cell. Dual specificity phosphatases (DSPs) are a subclass of the protein tyrosine phosphatase (PTP) gene superfamily, which are selective for dephosphorylating critical phosphothreonine and phosphotyrosine residues within MAP kinases. DSP gene expression is induced by a host of growth factors and/or cellular stresses, thereby negatively regulating MAP kinase superfamily members including MAPK/ERK, SAPK/JNK and p38. VH1-related member Y (VHY) is a member of a subgroup of myristoylated VH1-like small dual specificity phosphatases. It is highly expressed in testis, specifically in pachytene spermatocytes (midstage of meiotic division I) and round spermatids. VHY localizes to the plasma membrane in transfected 293T or NIH/3T3 cells.

## CHROMOSOMAL LOCATION

Genetic locus: DUSP15 (human) mapping to 20q11.21; Dusp15 (mouse) mapping to 2 H1.

## SOURCE

VHY (S-15) is an affinity purified goat polyclonal antibody raised against a peptide mapping near the N-terminus of VHY of human origin.

## PRODUCT

Each vial contains 200 µg IgG in 1.0 ml of PBS with < 0.1% sodium azide and 0.1% gelatin.

Blocking peptide available for competition studies, sc-47678 P, (100 µg peptide in 0.5 ml PBS containing < 0.1% sodium azide and 0.2% BSA).

## STORAGE

Store at 4° C, **\*\*DO NOT FREEZE\*\***. Stable for one year from the date of shipment. Non-hazardous. No MSDS required.

## APPLICATIONS

VHY (S-15) is recommended for detection of VHY of mouse, rat and human origin by Western Blotting (starting dilution 1:200, dilution range 1:100-1:1000), immunoprecipitation [1-2 µg per 100-500 µg of total protein (1 ml of cell lysate)], immunofluorescence (starting dilution 1:50, dilution range 1:50-1:500) and solid phase ELISA (starting dilution 1:30, dilution range 1:30-1:3000).

VHY (S-15) is also recommended for detection of VHY in additional species, including equine, canine, bovine, porcine and avian.

Suitable for use as control antibody for VHY siRNA (h): sc-61786, VHY siRNA (m): sc-61787, VHY shRNA Plasmid (h): sc-61786-SH, VHY shRNA Plasmid (m): sc-61787-SH, VHY shRNA (h) Lentiviral Particles: sc-61786-V and VHY shRNA (m) Lentiviral Particles: sc-61787-V.

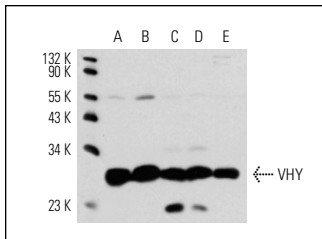
Molecular Weight of VHY: 26 kDa.

Positive Controls: NIH/3T3 whole cell lysate: sc-2210, F9 cell lysate: sc-2245 or rat testis extract: sc-2400.

## RECOMMENDED SECONDARY REAGENTS

To ensure optimal results, the following support (secondary) reagents are recommended: 1) Western Blotting: use donkey anti-goat IgG-HRP: sc-2020 (dilution range: 1:2000-1:100,000) or Cruz Marker™ compatible donkey anti-goat IgG-HRP: sc-2033 (dilution range: 1:2000-1:5000), Cruz Marker™ Molecular Weight Standards: sc-2035, TBS Blotto A Blocking Reagent: sc-2333 and Western Blotting Luminol Reagent: sc-2048. 2) Immunoprecipitation: use Protein A/G PLUS-Agarose: sc-2003 (0.5 ml agarose/2.0 ml). 3) Immunofluorescence: use donkey anti-goat IgG-FITC: sc-2024 (dilution range: 1:100-1:400) or donkey anti-goat IgG-TR: sc-2783 (dilution range: 1:100-1:400) with UltraCruz™ Mounting Medium: sc-24941.

## DATA



VHY (S-15): sc-47678. Western blot analysis of VHY expression in NIH/3T3 (A), F9 (B), NTERA-2 cl. D1 (C) and HS 181.Tes (D) whole cell lysates and rat testis tissue extract (E).

## RESEARCH USE

For research use only, not for use in diagnostic procedures.

## PROTOCOLS

See our web site at [www.scbt.com](http://www.scbt.com) or our catalog for detailed protocols and support products.



Try **VHY (G-7): sc-166173** or **VHY (F-11): sc-393888**, our highly recommended monoclonal alternatives to VHY (S-15).