

Factor B (M13/12): sc-47682

BACKGROUND

The complement component proteins, C3, C4 and C5, are potent anaphylatoxins that are released during complement activation. Binding of these proteins to their respective G protein-coupled receptors, C3 α R, C1R and C5 α R, induces proinflammatory events, such as cellular degranulation, smooth muscle contraction, arachidonic acid metabolism, cytokine release, leukocyte activation and cellular chemotaxis. Complement Factor B, also designated Properdin Factor B or PBF2, is part of the alternate pathway of the complement system and is cleaved by Factor D into two fragments: Ba and Bb. Bb combines with complement Factor 3b to produce the C3 or C5 convertase and plays a role in the differentiation and proliferation of preactivated B lymphocytes, lysis of erythrocytes, stimulation of lymphocyte blastogenesis and rapid spreading of peripheral blood monocytes. Ba is important in inhibiting the proliferation of preactivated B lymphocytes. Adipsin, also designated complement Factor D, is a serine protease that cleaves complement Factor B and may be involved in obesity. Factor H controls the function of the alternative complement pathway. FHR-1 (complement Factor H related protein 1) may play a role in lipid metabolism.

REFERENCES

1. Woods, D.E., et al. 1982. Isolation of cDNA clones for the human complement protein Factor B, a class III major histocompatibility complex gene product. *Proc. Natl. Acad. Sci. USA* 79: 5661-5665.
2. Campbell, R.D., et al. 1983. Molecular cloning and characterization of the gene coding for human complement protein Factor B. *Proc. Natl. Acad. Sci. USA* 80: 4464-4468.
3. Mole, J.E., et al. 1984. Complete primary structure for the zymogen of human complement Factor B. *J. Biol. Chem.* 259: 3407-3412.
4. Wu, L.C., et al. 1987. Cell-specific expression of the human complement protein Factor B gene: evidence for the role of two distinct 5'-flanking elements. *Cell* 48: 331-342.
5. Kolb, W.P., et al. 1989. Ba and Bb fragments of factor B activation: fragment production, biological activities, neoepitope expression and quantitation in clinical samples. *Complement Inflamm.* 6: 175-204.
6. Niemann, M.A., et al. 1991. The principal site of glycation of human complement Factor B. *Biochem. J.* 274: 473-480.
7. Jing, H., et al. 2000. New structural motifs on the chymotrypsin fold and their potential roles in complement Factor B. *EMBO J.* 19: 164-173.

CHROMOSOMAL LOCATION

Genetic locus: CFB (human) mapping to 6p21.33.

SOURCE

Factor B (M13/12) is a mouse monoclonal antibody raised against complement protein Factor B of human origin.

PRODUCT

Each vial contains 200 μ g IgG₁ kappa light chain in 1.0 ml of PBS with < 0.1% sodium azide and 0.1% gelatin.

APPLICATIONS

Factor B (M13/12) is recommended for detection of Complement Factor B Bb Fragment of human origin by Western Blotting (starting dilution 1:100, dilution range 1:100-1:1000) and immunoprecipitation [1-2 μ g per 100-500 μ g of total protein (1 ml of cell lysate)].

Suitable for use as control antibody for Factor B siRNA (h): sc-44510, Factor B shRNA Plasmid (h): sc-44510-SH and Factor B shRNA (h) Lentiviral Particles: sc-44510-V.

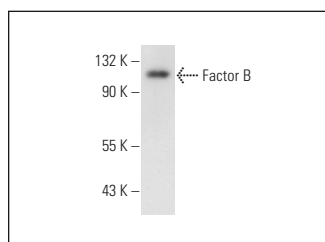
Molecular Weight of Factor B: 100 kDa.

Positive Controls: HeLa whole cell lysate: sc-2200.

RECOMMENDED SUPPORT REAGENTS

To ensure optimal results, the following support reagents are recommended: 1) Western Blotting: use m-IgG κ BP-HRP: sc-516102 or m-IgG κ BP-HRP (Cruz Marker): sc-516102-CM (dilution range: 1:1000-1:10000), Cruz Marker™ Molecular Weight Standards: sc-2035, UltraCruz® Blocking Reagent: sc-516214 and Western Blotting Luminol Reagent: sc-2048. 2) Immunoprecipitation: use Protein A/G PLUS-Agarose: sc-2003 (0.5 ml agarose/2.0 ml).

DATA



Factor B (M13/12): sc-47682. Western blot analysis of purified human Factor B.

STORAGE

Store at 4° C, **DO NOT FREEZE**. Stable for one year from the date of shipment. Non-hazardous. No MSDS required.

RESEARCH USE

For research use only, not for use in diagnostic procedures.

PROTOCOLS

See our web site at www.scbt.com for detailed protocols and support products.