

C3a (D17/1): sc-47689

BACKGROUND

Complement C3 precursor contains complement C3 β chain, complement C3 α chain, C3a anaphylatoxin, complement C3b α chain, complement C3c fragment, complement C3dg fragment, complement C3g fragment, complement C3d fragment and complement C3f fragment. C3a, C4a, and C5a are potent anaphylatoxins that are released during complement activation, a system of ligand-surface protein interactions specific to cells of hematopoietic lineage that aids in the elimination of pathogens. C3a and C5a secretion correlates with pathophysiological phenotypes such as asthma and bacterial meningitis. Binding of these proteins to their respective G protein-coupled receptors (C3aR, C5aR), which are present on the surface of myeloid leukocytes, induces proinflammatory events such as cellular degranulation, smooth muscle contraction, arachidonic acid metabolism, cytokine release, leukocyte activation and cellular chemotaxis. C3aR is expressed in brain and activated B-lymphocytes whereas C5aR is prevalent on the surface of hepatocyte, lung, smooth muscle, and endothelial cells. Upon activation, C3aR and C5aR are susceptible to rapid GRK-mediated phosphorylation and clathrin-coated vesicle targeting. C5aR utilizes the Ras-Raf-ERK1/2 cascade and couples to G_i/G_{16} proteins.

REFERENCES

1. de, Bruijn M.H., et al. 1985. Human complement component C3: cDNA coding sequence and derived primary structure. *Proc. Natl. Acad. Sci. USA* 82: 708-712.
2. Buhl, A.M., et al. 1995. Mitogen-activated protein kinase activation requires two signal inputs from the human anaphylatoxin C5a receptor. *J. Biol. Chem.* 270: 19828-19832.
3. Stahel, P.F., et al. 1997. TNF- α -mediated expression of the receptor for anaphylatoxin C5a on neurons in experimental *Listeria* meningoencephalitis. *J. Immunol.* 159: 861-869.
4. Settmacher, B., et al. 1999. Modulation of C3a activity: internalization of the human C3a receptor and its inhibition by C5a. *J. Immunol.* 162: 7409-7416.
5. Langkabel, P., et al. 1999. Ligand-induced phosphorylation of anaphylatoxin receptors C3aR and C5aR is mediated by G protein-coupled receptor kinases. *Eur. J. Immunol.* 29: 3035-3046.
6. Humbles, A.A., et al. 2000. A role for the C3a anaphylatoxin receptor in the effector phase of asthma. *Nature* 406: 998-1001.

CHROMOSOMAL LOCATION

Genetic locus: C3 (human) mapping to 19p13.3.

SOURCE

C3a (D17/1) is a mouse monoclonal antibody raised against complement protein factor C3a of human origin.

PRODUCT

Each vial contains 200 μ g IgG $_1$ kappa light chain in 1.0 ml of PBS with < 0.1% sodium azide and 0.1% gelatin.

APPLICATIONS

C3a (D17/1) is recommended for detection of C3a, C3a(desArg) and C3 of human origin by Western Blotting (starting dilution 1:100, dilution range) and immunoprecipitation [1-2 μ g per 100-500 μ g of total protein (1 ml of cell lysate)]; non cross-reactive with C4a or C5a of human origin.

Suitable for use as control antibody for C3 siRNA (h): sc-37068, C3 shRNA Plasmid (h): sc-37068-SH and C3 shRNA (h) Lentiviral Particles: sc-37068-V.

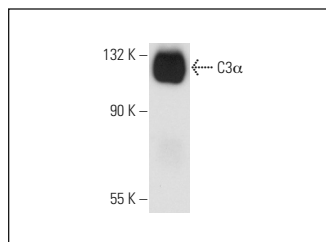
Molecular Weight of C3a: 115 kDa.

Positive Controls: human heart extract: sc-363763.

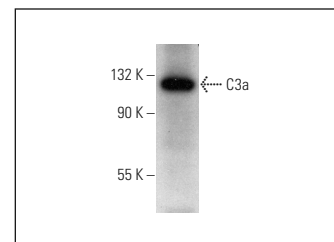
RECOMMENDED SUPPORT REAGENTS

To ensure optimal results, the following support reagents are recommended: 1) Western Blotting: use m-IgG κ BP-HRP: sc-516102 or m-IgG κ BP-HRP (Cruz Marker): sc-516102-CM (dilution range: 1:1000-1:10000), Cruz Marker[™] Molecular Weight Standards: sc-2035, UltraCruz[®] Blocking Reagent: sc-516214 and Western Blotting Luminol Reagent: sc-2048. 2) Immunoprecipitation: use Protein A/G PLUS-Agarose: sc-2003 (0.5 ml agarose/2.0 ml).

DATA



C3a (D17/1): sc-47689. Western blot analysis of the α subunit of human complement C3.



C3a (D17/1): sc-47689. Western blot analysis of C3a expression in human heart tissue extract.

STORAGE

Store at 4° C, **DO NOT FREEZE**. Stable for one year from the date of shipment. Non-hazardous. No MSDS required.

RESEARCH USE

For research use only, not for use in diagnostic procedures.

PROTOCOLS

See our web site at www.scbt.com for detailed protocols and support products.



See **C3 (B-9): sc-28294** for C3 antibody conjugates, including AC, HRP, FITC, PE, and Alexa Fluor[®] 488, 546, 594, 647, 680 and 790.