

ASB-11 (K-16): sc-47803

BACKGROUND

Members of the suppressor of cytokine signaling (SOCS) family of proteins contain C-terminal regions of homology called the SOCS box, which serves to couple SOCS proteins and their binding partners with the elongin B and C complex. Several other families of proteins also contain SOCS boxes, but differ from the SOCS proteins in the type of domain they contain upstream of the SOCS box. Members of the ankyrin repeat and SOCS box-containing (ASB) protein family include ASB-1, ASB-2, ASB-3, ASB-4 and ASB-11. ASB-1 is expressed in multiple organs, including the hematopoietic compartment. ASB-1 knockout mice display a diminution of spermatogenesis with less complete filling of seminiferous tubules. ASB-2 is a novel retinoic-acid (RA)-induced gene in acute promyelocytic leukemia (APL) cells and its expression induces growth-inhibition and chromatin condensation recapitulating early events critical to RA-induced differentiation of APL cells. ASB-2 is directly induced by all-*trans* retinoic acid, by the binding of RARα to the RAR binding element/RXR binding element in the ASB-2 promoter.

REFERENCES

- Hilton, D.J., et al. 1998. Twenty proteins containing a C-terminal SOCS box form five structural classes. *Proc. Natl. Acad. Sci. USA* 95: 114-119.
- Kile, B.T., et al. 2000. Cloning and characterization of the genes encoding the ankyrin repeat and SOCS box-containing proteins ASB-1, ASB-2, ASB-3 and ASB-4. *Gene* 258: 331-341.
- Kile, B.T., et al. 2001. Functional analysis of ASB-1 using genetic modification in mice. *Mol. Cell. Biol.* 21: 6189-6197.
- Guibal, F.C., et al. 2001. ASB-2 inhibits growth and promotes commitment in Myeloid Leukemia cells. *J. Biol. Chem.* 277: 218-224.

CHROMOSOMAL LOCATION

Genetic locus: ASB11 (human) mapping to Xp22.2; Asb11 (mouse) mapping to X F5.

SOURCE

ASB-11 (K-16) is an affinity purified goat polyclonal antibody raised against a peptide mapping within an internal region of ASB-11 of human origin.

PRODUCT

Each vial contains 200 µg IgG in 1.0 ml of PBS with < 0.1% sodium azide and 0.1% gelatin.

Blocking peptide available for competition studies, sc-47803 P, (100 µg peptide in 0.5 ml PBS containing < 0.1% sodium azide and 0.2% BSA).

STORAGE

Store at 4° C, **DO NOT FREEZE**. Stable for one year from the date of shipment. Non-hazardous. No MSDS required.

PROTOCOLS

See our web site at www.scbt.com or our catalog for detailed protocols and support products.

APPLICATIONS

ASB-11 (K-16) is recommended for detection of ASB-11 of mouse and human origin by Western Blotting (starting dilution 1:200, dilution range 1:100-1:1000), immunoprecipitation [1-2 µg per 100-500 µg of total protein (1 ml of cell lysate)], immunofluorescence (starting dilution 1:50, dilution range 1:50-1:500) and solid phase ELISA (starting dilution 1:30, dilution range 1:30-1:3000); may cross-react with ASB-9.

ASB-11 (K-16) is also recommended for detection of ASB-11 in additional species, including equine, canine, bovine, porcine and avian.

Suitable for use as control antibody for ASB-11 siRNA (h): sc-60206, ASB-11 siRNA (m): sc-60207, ASB-11 shRNA Plasmid (h): sc-60206-SH, ASB-11 shRNA Plasmid (m): sc-60207-SH, ASB-11 shRNA (h) Lentiviral Particles: sc-60206-V and ASB-11 shRNA (m) Lentiviral Particles: sc-60207-V.

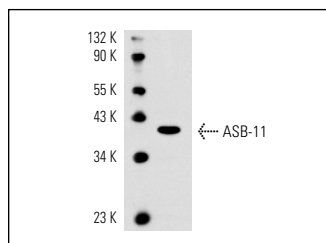
Molecular Weight of ASB-11: 35 kDa.

Positive Controls: ASB-9 (h): 293T lysate: sc-110869 or mouse liver extract: sc-2256.

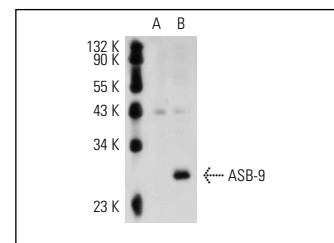
RECOMMENDED SECONDARY REAGENTS

To ensure optimal results, the following support (secondary) reagents are recommended: 1) Western Blotting: use donkey anti-goat IgG-HRP: sc-2020 (dilution range: 1:2000-1:100,000) or Cruz Marker™ compatible donkey anti-goat IgG-HRP: sc-2033 (dilution range: 1:2000-1:5000), Cruz Marker™ Molecular Weight Standards: sc-2035, TBS Blotto A Blocking Reagent: sc-2333 and Western Blotting Luminol Reagent: sc-2048. 2) Immunoprecipitation: use Protein A/G PLUS-Agarose: sc-2003 (0.5 ml agarose/2.0 ml). 3) Immunofluorescence: use donkey anti-goat IgG-FITC: sc-2024 (dilution range: 1:100-1:400) or donkey anti-goat IgG-TR: sc-2783 (dilution range: 1:100-1:400) with UltraCruz™ Mounting Medium: sc-24941.

DATA



ASB-11 (K-16): sc-47803. Western blot analysis of ASB-11 expression in mouse liver tissue extract.



ASB-11 (K-16): sc-47803. Western blot analysis of ASB-9 expression in non-transfected: sc-117752 (A) and human ASB-9 transfected: sc-110869 (B) 293T whole cell lysates.

RESEARCH USE

For research use only, not for use in diagnostic procedures.