

CARD 10 (C-12): sc-47826

BACKGROUND

Membrane-associated guanylate kinase (MAGUK) family members function as molecular scaffolds for the assembly of multiprotein complexes localizing to the plasma membrane. Several mammalian proteins related to the *Drosophila* tumor suppressor discs-large (dlg) gene product belong to the MAGUK family, including the caspase recruitment domain (CARD) protein family with the exception of CARD 9. The CARD domain consists of six or seven antiparallel α helices. CARD family members participate in apoptosis signaling through highly specific protein-protein homophilic interactions. CARD 10 (also designated CARD-containing MAGUK protein 3 or Carma 3) interacts with Bcl-10 to activate NF κ B. CARD 10 is expressed in a variety of adult and fetal tissues, including heart, kidney and liver and in multiple cancer cell lines.

CHROMOSOMAL LOCATION

Genetic locus: CARD10 (human) mapping to 22q13.1; Card10 (mouse) mapping to 15 E1.

SOURCE

CARD 10 (C-12) is an affinity purified goat polyclonal antibody raised against a peptide mapping near the C-terminus of CARD 10 of human origin.

PRODUCT

Each vial contains 200 μ g IgG in 1.0 ml of PBS with < 0.1% sodium azide and 0.1% gelatin.

Blocking peptide available for competition studies, sc-47826 P, (100 μ g peptide in 0.5 ml PBS containing < 0.1% sodium azide and 0.2% BSA).

STORAGE

Store at 4° C, ****DO NOT FREEZE****. Stable for one year from the date of shipment. Non-hazardous. No MSDS required.

APPLICATIONS

CARD 10 (C-12) is recommended for detection of CARD 10 of mouse and human origin by Western Blotting (starting dilution 1:200, dilution range 1:100-1:1000), immunoprecipitation [1-2 μ g per 100-500 μ g of total protein (1 ml of cell lysate)], immunofluorescence (starting dilution 1:50, dilution range 1:50-1:500) and solid phase ELISA (starting dilution 1:30, dilution range 1:30-1:3000).

CARD 10 (C-12) is also recommended for detection of CARD 10 in additional species, including porcine.

Suitable for use as control antibody for CARD 10 siRNA (h): sc-60326, CARD 10 siRNA (m): sc-60327, CARD 10 shRNA Plasmid (h): sc-60326-SH, CARD 10 shRNA Plasmid (m): sc-60327-SH, CARD 10 shRNA (h) Lentiviral Particles: sc-60326-V and CARD 10 shRNA (m) Lentiviral Particles: sc-60327-V.

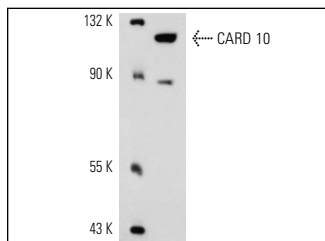
Molecular Weight of CARD 10: 116 kDa.

Positive Controls: NIH/3T3 whole cell lysate: sc-2210.

RECOMMENDED SECONDARY REAGENTS

To ensure optimal results, the following support (secondary) reagents are recommended: 1) Western Blotting: use donkey anti-goat IgG-HRP: sc-2020 (dilution range: 1:2000-1:100,000) or Cruz Marker™ compatible donkey anti-goat IgG-HRP: sc-2033 (dilution range: 1:2000-1:5000), Cruz Marker™ Molecular Weight Standards: sc-2035, TBS Blotto A Blocking Reagent: sc-2333 and Western Blotting Luminol Reagent: sc-2048. 2) Immunoprecipitation: use Protein A/G PLUS-Agarose: sc-2003 (0.5 ml agarose/2.0 ml). 3) Immunofluorescence: use donkey anti-goat IgG-FITC: sc-2024 (dilution range: 1:100-1:400) or donkey anti-goat IgG-TR: sc-2783 (dilution range: 1:100-1:400) with UltraCruz™ Mounting Medium: sc-24941.

DATA



CARD 10 (C-12): sc-47826. Western blot analysis of CARD 10 expression in NIH/3T3 whole cell lysate.

SELECT PRODUCT CITATIONS

1. Borthakur, A., et al. 2010. Platelet-activating factor-induced NF κ B activation and IL-8 production in intestinal epithelial cells are Bcl10-dependent. *Inflamm. Bowel Dis.* 16: 593-603.
2. Chang, Y.W., et al. 2015. CARMA3 represses metastasis-suppressor NME2 to promote lung cancer stemness and metastasis. *Am. J. Respir. Crit. Care Med.* E-published.

RESEARCH USE

For research use only, not for use in diagnostic procedures.

PROTOCOLS

See our web site at www.scbt.com or our catalog for detailed protocols and support products.



Try **CARD 10 (B-4): sc-271849**, our highly recommended monoclonal alternative to CARD 10 (C-12).