

CARD 10 (N-16): sc-47829

BACKGROUND

Membrane-associated guanylate kinase (MAGUK) family members function as molecular scaffolds for the assembly of multiprotein complexes localizing to the plasma membrane. Several mammalian proteins related to the *Drosophila* tumor suppressor discs-large (dlg) gene product belong to the MAGUK family, including the caspase recruitment domain (CARD) protein family with the exception of CARD9. The CARD domain consists of 6 or 7 antiparallel α helices. CARD family members participate in apoptosis signaling through highly specific protein-protein homophilic interactions. CARD 10 (also designated CARD-containing MAGUK protein 3 or Carma 3) interacts with BCL-10 to activate NF κ B. CARD10 is expressed in a variety of adult and fetal tissues, including heart, kidney and liver, and in multiple cancer cell lines.

REFERENCES

1. Dimitratos, S.D., Woods, D.F. and Bryant, P.J. 1997. Camguk, Lin-2, and CASK: novel membrane-associated guanylate kinase homologs that also contain CaM kinase domains. *Mech. Dev.* 63: 127-130.
2. Bredt, D.S. 2000. Reeling CASK into the nucleus. *Nature* 404: 241-242.

CHROMOSOMAL LOCATION

Genetic locus: CARD10 (human) mapping to 22q13.1; Card10 (mouse) mapping to 15 E1.

SOURCE

CARD 10 (N-16) is an affinity purified goat polyclonal antibody raised against a peptide mapping near the N-terminus of CARD 10 of human origin.

PRODUCT

Each vial contains 200 μ g IgG in 1.0 ml of PBS with < 0.1% sodium azide and 0.1% gelatin.

Blocking peptide available for competition studies, sc-47829 P, (100 μ g peptide in 0.5 ml PBS containing < 0.1% sodium azide and 0.2% BSA).

APPLICATIONS

CARD 10 (N-16) is recommended for detection of CARD 10 of mouse and human origin by Western Blotting (starting dilution 1:200, dilution range 1:100-1:1000), immunofluorescence (starting dilution 1:50, dilution range 1:50-1:500), immunohistochemistry (including paraffin-embedded sections) (starting dilution 1:50, dilution range 1:50-1:500) and solid phase ELISA (starting dilution 1:30, dilution range 1:30-1:3000).

CARD 10 (N-16) is also recommended for detection of CARD 10 in additional species, including equine, canine and bovine.

Suitable for use as control antibody for CARD 10 siRNA (h): sc-60326, CARD 10 siRNA (m): sc-60327, CARD 10 shRNA Plasmid (h): sc-60326-SH, CARD 10 shRNA Plasmid (m): sc-60327-SH, CARD 10 shRNA (h) Lentiviral Particles: sc-60326-V and CARD 10 shRNA (m) Lentiviral Particles: sc-60327-V.

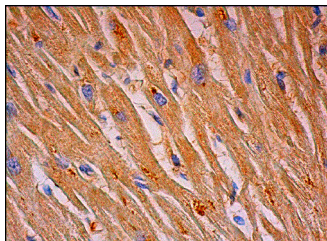
Molecular Weight of CARD 10: 116 kDa.

Positive Controls: NIH/3T3 whole cell lysate: sc-2210.

RECOMMENDED SECONDARY REAGENTS

To ensure optimal results, the following support (secondary) reagents are recommended: 1) Western Blotting: use donkey anti-goat IgG-HRP: sc-2020 (dilution range: 1:2000-1:100,000) or Cruz Marker[™] compatible donkey anti-goat IgG-HRP: sc-2033 (dilution range: 1:2000-1:5000), Cruz Marker[™] Molecular Weight Standards: sc-2035, TBS Blotto A Blocking Reagent: sc-2333 and Western Blotting Luminol Reagent: sc-2048. 2) Immunofluorescence: use donkey anti-goat IgG-FITC: sc-2024 (dilution range: 1:100-1:400) or donkey anti-goat IgG-TR: sc-2783 (dilution range: 1:100-1:400) with UltraCruz[™] Mounting Medium: sc-24941. 3) Immunohistochemistry: use ImmunoCruz[™]: sc-2053 or ABC: sc-2023 goat IgG Staining Systems.

DATA



CARD 10 (N-16): sc-47829. Immunoperoxidase staining of formalin fixed, paraffin-embedded human heart muscle tissue showing cytoplasmic staining of myocytes.

STORAGE

Store at 4° C, **DO NOT FREEZE**. Stable for one year from the date of shipment. Non-hazardous. No MSDS required.

RESEARCH USE

For research use only, not for use in diagnostic procedures.

PROTOCOLS

See our web site at www.scbt.com or our catalog for detailed protocols and support products.

MONOS
Satisfaction
Guaranteed

Try **CARD 10 (B-4): sc-271849**, our highly recommended monoclonal alternative to CARD 10 (N-16).