

CTMP (N-15): sc-47860

BACKGROUND

The Akt family of protein kinases (also designated PKB) play a role in Insulin signaling, cellular survival and transformation. Genetic alterations resulting in an aberrant activation of the phosphoinositol-3-kinase (PI3K)/Akt signaling pathway frequently occur in glioblastomas. Such factors include phosphatase and tensin homolog (PTEN) mutation, epidermal growth factor receptor (EGFR) amplification and rearrangement, and carboxy-terminal modulator protein (CTMP) hypermethylation. CTMP binds to the C-terminal regulatory domain of Akt and acts as a negative regulator. CTMP inhibits phosphorylation of Akt on serine 473 and threonine 308, thereby reducing its activity. Decreased expression of CTMP by hypermethylation of its promoter has been linked to the pathogenesis of glioblastomas.

REFERENCES

1. Maira, S.M., et al. 2001. Carboxyl-terminal modulator protein (CTMP), a negative regulator of PKB/Akt and v-Akt at the plasma membrane. *Science* 294: 374-380.
2. Knobbe, C.B., et al. 2004. Hypermethylation and transcriptional downregulation of the carboxyl-terminal modulator protein gene in glioblastomas. *J. Natl. Cancer Inst.* 96: 483-486.
3. Knobbe, C.B., et al. 2005. Genetic alteration and expression of the phosphoinositol-3-kinase/Akt pathway genes PIK3CA and PIKE in human glioblastomas. *Neuropathol. Appl. Neurobiol.* 31: 486-490.
4. Chae, K.S., et al. 2005. Akt activation is necessary for growth factor-induced trafficking of functional K(Ca) channels in developing parasympathetic neurons. *J. Neurophysiol.* 93: 1174-1182.
5. Williams, D.L., et al. 2006. Modulation of the phosphoinositide 3-kinase signaling pathway alters host response to sepsis, inflammation, and ischemia/reperfusion injury. *Shock* 25: 432-439.
6. Martelli, A.M., et al. 2006. Intracellular 3'-phosphoinositide metabolism and Akt signaling: new mechanisms for tumorigenesis and protection against apoptosis? *Cell. Signal.* 18: 1101-1107.

CHROMOSOMAL LOCATION

Genetic locus: THEM4 (human) mapping to 1q21.3.

SOURCE

CTMP (N-15) is an affinity purified goat polyclonal antibody raised against a peptide mapping near the N-terminus of CTMP of human origin.

PRODUCT

Each vial contains 200 µg IgG in 1.0 ml of PBS with < 0.1% sodium azide and 0.1% gelatin.

Blocking peptide available for competition studies, sc-47860 P, (100 µg peptide in 0.5 ml PBS containing < 0.1% sodium azide and 0.2% BSA).

STORAGE

Store at 4° C, ****DO NOT FREEZE****. Stable for one year from the date of shipment. Non-hazardous. No MSDS required.

APPLICATIONS

CTMP (N-15) is recommended for detection of CTMP isoforms a and b of human origin by Western Blotting (starting dilution 1:200, dilution range 1:100-1:1000), immunoprecipitation [1-2 µg per 100-500 µg of total protein (1 ml of cell lysate)], immunofluorescence (starting dilution 1:50, dilution range 1:50-1:500) and solid phase ELISA (starting dilution 1:30, dilution range 1:30-1:3000).

Suitable for use as control antibody for CTMP siRNA (h): sc-60469, CTMP shRNA Plasmid (h): sc-60469-SH and CTMP shRNA (h) Lentiviral Particles: sc-60469-V.

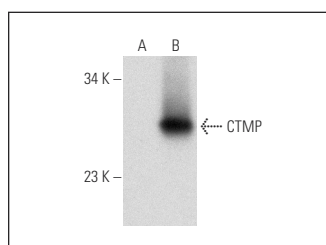
Molecular Weight of CTMP: 26 kDa.

Positive Controls: CTMP (h): 293T Lysate: sc-117060.

RECOMMENDED SECONDARY REAGENTS

To ensure optimal results, the following support (secondary) reagents are recommended: 1) Western Blotting: use donkey anti-goat IgG-HRP: sc-2020 (dilution range: 1:2000-1:100,000) or Cruz Marker™ compatible donkey anti-goat IgG-HRP: sc-2033 (dilution range: 1:2000-1:5000), Cruz Marker™ Molecular Weight Standards: sc-2035, TBS Blotto A Blocking Reagent: sc-2333 and Western Blotting Luminol Reagent: sc-2048. 2) Immunoprecipitation: use Protein A/G PLUS-Agarose: sc-2003 (0.5 ml agarose/2.0 ml). 3) Immunofluorescence: use donkey anti-goat IgG-FITC: sc-2024 (dilution range: 1:100-1:400) or donkey anti-goat IgG-TR: sc-2783 (dilution range: 1:100-1:400) with UltraCruz™ Mounting Medium: sc-24941.

DATA



CTMP (N-15): sc-47860. Western blot analysis of CTMP expression in non-transfected: sc-117752 (A) and human CTMP transfected: sc-117060 (B) 293T whole cell lysates.

RESEARCH USE

For research use only, not for use in diagnostic procedures.


 MONOS
Satisfaction
Guaranteed

Try **CTMP (H-10): sc-390353**, our highly recommended wmonoclonal alternative to CTMP (N-15).