

NUB1 (Y-14): sc-48062

BACKGROUND

NEDD8 is a ubiquitin-like protein that controls vital biological events through its conjugation to cullin proteins. NEDD8 ultimate buster-1 (NUB1), is a negative regulator of the NEDD8 system that recruits NEDD8 and its conjugates to the proteasome for degradation. It is, therefore, a cell growth regulator. The UBA domain of NUB1 is the specific acceptor for the linear ubiquitin precursor. NUB1 is composed of 601 amino acids. It is an interferon-inducible protein and predominantly localizes in the nucleus. NUB1 is specifically expressed in adult human testis, ovary, heart, and skeletal muscle tissues.

REFERENCES

1. Online Mendelian Inheritance in Man, OMIM™. 2002. Johns Hopkins University, Baltimore, MD. MIM Number: 607981. World Wide Web URL: <http://www.ncbi.nlm.nih.gov/omim/>
2. van der Spuy, J., et al. 2003. The expression of the Leber congenital amaurosis protein AIPL1 coincides with rod and cone photoreceptor development. *Invest. Ophthalmol. Vis. Sci.* 44: 5396-5403.
3. Hipp, M.S., Raasi, S., Groettrup, M. and Schmidtke, G. 2004. NEDD8 ultimate buster-1L interacts with the ubiquitin-like protein FAT10 and accelerates its degradation. *J. Biol. Chem.* 279: 16503-16510.
4. Kanaya, K., Sohocki, M.M. and Kamitani, T. 2004. Abolished interaction of NUB1 with mutant AIPL1 involved in Leber congenital amaurosis. *Biochem. Biophys. Res. Commun.* 317: 768-773.
5. Tanaka, T., Yeh, E.T. and Kamitani, T. 2004. NUB1-mediated targeting of the ubiquitin precursor UbC1 for its C-terminal hydrolysis. *Eur. J. Biochem.* 271: 972-982.
6. van der Spuy, J. and Cheetham, M.E. 2004. The Leber congenital amaurosis protein AIPL1 modulates the nuclear translocation of NUB1 and suppresses inclusion formation by NUB1 fragments. *J. Biol. Chem.* 279: 48038-48047.

CHROMOSOMAL LOCATION

Genetic locus: NUB1 (human) mapping to 7q36.1; Nub1 (mouse) mapping to 5 A3.

SOURCE

NUB1 (Y-14) is an affinity purified goat polyclonal antibody raised against a peptide mapping within an internal region of NUB1 of human origin.

PRODUCT

Each vial contains 200 µg IgG in 1.0 ml of PBS with < 0.1% sodium azide and 0.1% gelatin.

Blocking peptide available for competition studies, ready P, (100 µg peptide in 0.5 ml PBS containing < 0.1% sodium azide and 0.2% BSA).

STORAGE

Store at 4° C, ****DO NOT FREEZE****. Stable for one year from the date of shipment. Non-hazardous. No MSDS required.

APPLICATIONS

NUB1 (Y-14) is recommended for detection of NUB1 of mouse, rat and human origin by Western Blotting (starting dilution 1:200, dilution range 1:100-1:1000), immunoprecipitation [1-2 µg per 100-500 µg of total protein (1 ml of cell lysate)], immunofluorescence (starting dilution 1:50, dilution range 1:50-1:500) and solid phase ELISA (starting dilution 1:30, dilution range 1:30-1:3000).

NUB1 (Y-14) is also recommended for detection of NUB1 in additional species, including equine, bovine, porcine and avian.

Suitable for use as control antibody for NUB1 siRNA (h): sc-61237, NUB1 siRNA (m): sc-61238, NUB1 shRNA Plasmid (h): sc-61237-SH, NUB1 shRNA Plasmid (m): sc-61238-SH, NUB1 shRNA (h) Lentiviral Particles: sc-61237-V and NUB1 shRNA (m) Lentiviral Particles: sc-61238-V.

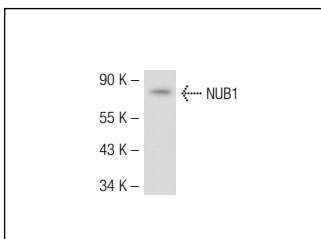
Molecular Weight of NUB1: 69.1 kDa.

Positive Controls: Ramos cell lysate: sc-2216.

RECOMMENDED SECONDARY REAGENTS

To ensure optimal results, the following support (secondary) reagents are recommended: 1) Western Blotting: use donkey anti-goat IgG-HRP: sc-2020 (dilution range: 1:2000-1:100,000) or Cruz Marker™ compatible donkey anti-goat IgG-HRP: sc-2033 (dilution range: 1:2000-1:5000), Cruz Marker™ Molecular Weight Standards: sc-2035, TBS Blotto A Blocking Reagent: sc-2333 and Western Blotting Luminol Reagent: sc-2048. 2) Immunoprecipitation: use Protein A/G PLUS-Agarose: sc-2003 (0.5 ml agarose/2.0 ml). 3) Immunofluorescence: use donkey anti-goat IgG-FITC: sc-2024 (dilution range: 1:100-1:400) or donkey anti-goat IgG-TR: sc-2783 (dilution range: 1:100-1:400) with UltraCruz™ Mounting Medium: sc-24941.

DATA



NUB1 (Y-14): sc-48062. Western blot analysis of NUB1 expression in Ramos whole cell lysate.

RESEARCH USE

For research use only, not for use in diagnostic procedures.

MONOS
Satisfaction
Guaranteed

Try **NUB1 (F-10): sc-377003**, our highly recommended monoclonal alternative to NUB1 (Y-14).