

# KIF2A (C-20): sc-48230

## BACKGROUND

Kinesin is a cytoskeletal motor protein involved in axonal transport and cell division. The kinesin superfamily proteins (KIFs) are motor proteins that transport vesicles important for axonal extension in developing neurons, such as macromolecules and membranous organelles, along microtubules. KIFs are involved in neuronal function and development. Kinesin heavy chain member 2A (KIF2A), also designated KNS2, is a microtubule-associated central type motor protein and belongs to the kinesin-like protein family. KIF2A is abundantly present in developing axons. The synthetic retinoid N-(4-hydroxyphenyl)-all-*trans*-retinamide HPR, a cancer chemopreventive agent *in vivo* and an apoptotic cell death inducer *in vitro*, regulates KIF2A.

## REFERENCES

- Debernardi, S., Fontanella, E., De Gregorio, L., Pierotti, M.A. and Delia, D. 1997. Identification of a novel human kinesin-related gene (HK2) by the cDNA display technique. *Genomics* 42: 67-73.
- Morfini, G., Quiroga, S., Rosa, A., Kosik, K. and Cáceres, A. 1997. Suppression of KIF2 in PC12 cells alters the distribution of a growth cone nonsynaptic membrane receptor and inhibits neurite extension. *The J. Cell Sci.* 138: 657-69.
- Online Mendelian Inheritance in Man, OMIM™. 2002. Johns Hopkins University, Baltimore, MD. MIM Number: 602591. World Wide Web URL: <http://www.ncbi.nlm.nih.gov/omim/>
- Homma, N., Takei, Y., Tanaka, Y., Nakata, T., Terada, S., Kikkawa, M., Noda, Y. and Hirokawa, N. 2003. Kinesin superfamily protein 2A (KIF2A) functions in suppression of collateral branch extension. *Cell* 114: 229-239.

## CHROMOSOMAL LOCATION

Genetic locus: KIF2A (human) mapping to 5q12.1; Kif2a (mouse) mapping to 13 D2.1.

## SOURCE

KIF2A (C-20) is an affinity purified goat polyclonal antibody raised against a peptide mapping near the C-terminus of KIF2A of human origin.

## PRODUCT

Each vial contains 200 µg IgG in 1.0 ml of PBS with < 0.1% sodium azide and 0.1% gelatin.

Blocking peptide available for competition studies, sc-48230 P, (100 µg peptide in 0.5 ml PBS containing < 0.1% sodium azide and 0.2% BSA).

## STORAGE

Store at 4° C, **\*\*DO NOT FREEZE\*\***. Stable for one year from the date of shipment. Non-hazardous. No MSDS required.

## PROTOCOLS

See our web site at [www.scbt.com](http://www.scbt.com) or our catalog for detailed protocols and support products.

## APPLICATIONS

KIF2A (C-20) is recommended for detection of KIF2A of mouse and human origin by Western Blotting (starting dilution 1:200, dilution range 1:100-1:1000), immunoprecipitation [1-2 µg per 100-500 µg of total protein (1 ml of cell lysate)], immunofluorescence (starting dilution 1:50, dilution range 1:50-1:500) and solid phase ELISA (starting dilution 1:30, dilution range 1:30-1:3000).

KIF2A (C-20) is also recommended for detection of KIF2A in additional species, including equine, canine, bovine, porcine and avian.

Suitable for use as control antibody for KIF2A siRNA (h): sc-60884, KIF2A siRNA (m): sc-60885, KIF2A shRNA Plasmid (h): sc-60884-SH, KIF2A shRNA Plasmid (m): sc-60885-SH, KIF2A shRNA (h) Lentiviral Particles: sc-60884-V and KIF2A shRNA (m) Lentiviral Particles: sc-60885-V.

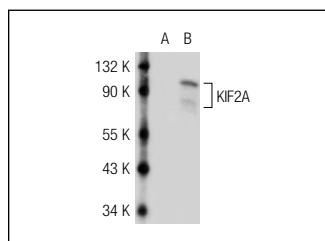
Molecular Weight of KIF2A: 80 kDa.

Positive Controls: KIF2A (m): 293T Lysate: sc-121213.

## RECOMMENDED SECONDARY REAGENTS

To ensure optimal results, the following support (secondary) reagents are recommended: 1) Western Blotting: use donkey anti-goat IgG-HRP: sc-2020 (dilution range: 1:2000-1:100,000) or Cruz Marker™ compatible donkey anti-goat IgG-HRP: sc-2033 (dilution range: 1:2000-1:5000), Cruz Marker™ Molecular Weight Standards: sc-2035, TBS Blotto A Blocking Reagent: sc-2333 and Western Blotting Luminol Reagent: sc-2048. 2) Immunoprecipitation: use Protein A/G PLUS-Agarose: sc-2003 (0.5 ml agarose/2.0 ml). 3) Immunofluorescence: use donkey anti-goat IgG-FITC: sc-2024 (dilution range: 1:100-1:400) or donkey anti-goat IgG-TR: sc-2783 (dilution range: 1:100-1:400) with UltraCruz™ Mounting Medium: sc-24941.

## DATA



KIF2A (C-20): sc-48230. Western blot analysis of KIF2A expression in non-transfected: sc-117752 (A) and mouse KIF2A transfected: sc-121213 (B) 293T whole cell lysates.

## RESEARCH USE

For research use only, not for use in diagnostic procedures.

**MONOS**  
Satisfaction  
Guaranteed

Try **KIF2A (D-7): sc-271471** or **KIF2A (F-2): sc-271027**, our highly recommended monoclonal alternatives to KIF2A (C-20).