

RGS17 (W-15): sc-48286

BACKGROUND

The regulators of G protein signaling (RGS) proteins inhibit heterotrimeric G protein signaling. RGS proteins work by functioning as GTPase-activating proteins (which increase the GTPase activity of G protein α subunits) thereby driving G proteins into their inactive GDP-bound form. The human gene that encodes RGS17 (regulator of G protein signaling 17, RGSZ2) contains four exons, spans more than 33 kb and maps to chromosome 6q25.2; the mouse RGS17 gene maps to chromosome 10 A1 as determined by interspecific backcross mapping. RGS17 is a member of the RZ/A protein family. RZ/A proteins have a simple structure that consists of a conserved N-terminal cysteine string motif, RGS box and short C-terminal, which confer GAP activity and the ability to undergo covalent modification and associate with other proteins at their N-termini.

REFERENCES

1. Sierra, D.A., Gilbert, D.J., Householder, D., Grishin, N.V., Yu, K., Ukidwe, P., Barker, S.A., He, W., Wensel, T.G., Otero, G., Brown, G., Copeland, N.G., Jenkins, N.A. and Wilkie, T.M. 2002. Evolution of the regulators of G protein signaling multigene family in mouse and human. *Genomics* 79: 177-185.
2. Online Mendelian Inheritance in Man, OMIM™. 2002. Johns Hopkins University, Baltimore, MD. MIM Number: 607190. World Wide Web URL: <http://www.ncbi.nlm.nih.gov/omim/>
3. Mao, H., Zhao, Q., Daigle, M., Ghahremani, M.H., Chidiac, P. and Albert, P.R. 2004. RGS17/RGSZ2, a novel regulator of $G_{i/o}$, G_z and G_q signaling. *J. Biol. Chem.* 279: 26314-26322.
4. Garzón, J., Rodríguez-Muñoz, M., López-Fando, A. and Sánchez-Blázquez, P. 2005. The RGSZ2 protein exists in a complex with μ -opioid receptors and regulates the desensitizing capacity of G_z proteins. *Neuropsychopharmacology* 30: 1632-1648.
5. Nunn, C., Mao, H., Chidiac, P. and Albert, P.R. 2006. RGS17/RGSZ2 and the RZ/A family of regulators of G protein signaling. *Semin. Cell Dev. Biol.* 17: 390-399.

CHROMOSOMAL LOCATION

Genetic locus: RGS17 (human) mapping to 6q25.2; Rgs17 (mouse) mapping to 10 A1.

SOURCE

RGS17 (W-15) is an affinity purified goat polyclonal antibody raised against a peptide mapping within an internal region of RGS17 of human origin.

PRODUCT

Each vial contains 200 μ g IgG in 1.0 ml of PBS with < 0.1% sodium azide and 0.1% gelatin.

Blocking peptide available for competition studies, sc-48286 P, (100 μ g peptide in 0.5 ml PBS containing < 0.1% sodium azide and 0.2% BSA).

RESEARCH USE

For research use only, not for use in diagnostic procedures.

APPLICATIONS

RGS17 (W-15) is recommended for detection of RGS17 of mouse and human origin by Western Blotting (starting dilution 1:200, dilution range 1:100-1:1000), immunoprecipitation [1-2 μ g per 100-500 μ g of total protein (1 ml of cell lysate)], immunofluorescence (starting dilution 1:50, dilution range 1:50-1:500) and solid phase ELISA (starting dilution 1:30, dilution range 1:30-1:3000).

RGS17 (W-15) is also recommended for detection of RGS17 in additional species, including equine, canine, bovine, porcine and avian.

Suitable for use as control antibody for RGS17 siRNA (h): sc-61466, RGS17 siRNA (m): sc-61467, RGS17 shRNA Plasmid (h): sc-61466-SH, RGS17 shRNA Plasmid (m): sc-61467-SH, RGS17 shRNA (h) Lentiviral Particles: sc-61466-V and RGS17 shRNA (m) Lentiviral Particles: sc-61467-V.

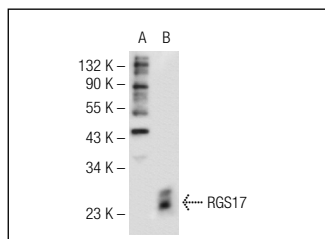
Molecular Weight of RGS17: 24 kDa.

Positive Controls: RGS17 (h): 293T Lysate: sc-113106.

RECOMMENDED SECONDARY REAGENTS

To ensure optimal results, the following support (secondary) reagents are recommended: 1) Western Blotting: use donkey anti-goat IgG-HRP: sc-2020 (dilution range: 1:2000-1:100,000) or Cruz Marker™ compatible donkey anti-goat IgG-HRP: sc-2033 (dilution range: 1:2000-1:5000), Cruz Marker™ Molecular Weight Standards: sc-2035, TBS Blotto A Blocking Reagent: sc-2333 and Western Blotting Luminol Reagent: sc-2048. 2) Immunoprecipitation: use Protein A/G PLUS-Agarose: sc-2003 (0.5 ml agarose/2.0 ml). 3) Immunofluorescence: use donkey anti-goat IgG-FITC: sc-2024 (dilution range: 1:100-1:400) or donkey anti-goat IgG-TR: sc-2783 (dilution range: 1:100-1:400) with UltraCruz™ Mounting Medium: sc-24941.

DATA



RGS17 (W-15): sc-48286. Western blot analysis of RGS17 expression in non-transfected: sc-110760 (A) and human RGS17 transfected: sc-113106 (B) 293 whole cell lysates.

STORAGE

Store at 4° C, **DO NOT FREEZE**. Stable for one year from the date of shipment. Non-hazardous. No MSDS required.

PROTOCOLS

See our web site at www.scbt.com or our catalog for detailed protocols and support products.