

# Mammaglobin A (E-17): sc-48330

## BACKGROUND

Secretoglobins (also called lipophilins or mammaglobins) are small secreted proteins of endocrine-responsive organs and mucosal epithelia that form multimeric complexes and correlate with the development of various human cancers. Lipophilin A and Lipophilin B are orthologs of prostatein (estramustine-binding protein), the major secretory glycoprotein of the rat ventral prostate gland. Lipophilin A, also designated LIPA, LPHA and secretoglobin, family 1D, member 1 (SCGB1D1), is a component of a heterodimeric molecule present in human tears. Lipophilin B, also designated LIPB, LPHB and secretoglobin, family 1D, member 2 (SCGB1D2), mRNA can be overexpressed in breast tumors and shows a high degree of correlation with the mRNA expression profile of mammaglobin. Histological detection in breast tissue of Mammaglobin A, also designated MGB1 and secretoglobin, family 2A, member 2 (SCGB2A2) and Mammaglobin B (also designated MGB2, lipophilin C, LPHC, UGB3 and SCGB2A2) is a reliable diagnostic marker for breast tumors.

## REFERENCES

1. Wood, D.D., et al. 1984. Interaction between human Myelin basic protein and Lipophilin. *Neurochem. Res.* 9: 1523-1531.
2. Gow, A. 1997. Redefining the Lipophilin family of proteolipid proteins. *J. Neurosci. Res.* 50: 659-664.
3. Lehrer, R.I., et al. 1998. Lipophilin, a novel heterodimeric protein of human tears. *FEBS Lett.* 432: 163-167.
4. Carter, D., et al. 2002. Purification and characterization of the Mammaglobin/Lipophilin B complex, a promising diagnostic marker for breast cancer. *Biochemistry* 41: 6714-6722.
5. Carter, D., et al. 2003. Serum antibodies to Lipophilin B detected in late stage breast cancer patients. *Clin. Cancer Res.* 9: 749-754.

## CHROMOSOMAL LOCATION

Genetic locus: SCGB2A2 (human) mapping to 11q12.3.

## SOURCE

Mammaglobin A (E-17) is an affinity purified goat polyclonal antibody raised against a peptide mapping within an internal region of Mammaglobin A of human origin.

## PRODUCT

Each vial contains 200 µg IgG in 1.0 ml of PBS with < 0.1% sodium azide and 0.1% gelatin.

Blocking peptide available for competition studies, sc-48330 P, (100 µg peptide in 0.5 ml PBS containing < 0.1% sodium azide and 0.2% BSA).

## STORAGE

Store at 4° C, \*\*DO NOT FREEZE\*\*. Stable for one year from the date of shipment. Non-hazardous. No MSDS required.

## RESEARCH USE

For research use only, not for use in diagnostic procedures.

## APPLICATIONS

Mammaglobin A (E-17) is recommended for detection of Mammaglobin A of human origin by Western Blotting (starting dilution 1:200, dilution range 1:100-1:1000), immunoprecipitation [1-2 µg per 100-500 µg of total protein (1 ml of cell lysate)], immunofluorescence (starting dilution 1:50, dilution range 1:50-1:500) and solid phase ELISA (starting dilution 1:30, dilution range 1:30-1:3000).

Suitable for use as control antibody for Mammaglobin A siRNA (h): sc-45747, Mammaglobin A shRNA Plasmid (h): sc-45747-SH and Mammaglobin A shRNA (h) Lentiviral Particles: sc-45747-V.

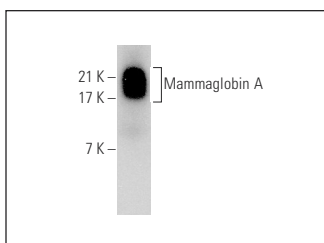
Molecular Weight of Mammaglobin A: 18 kDa.

Positive Controls: ZR-75-1 cell lysate: sc-2241 or human breast extract: sc-363753.

## RECOMMENDED SECONDARY REAGENTS

To ensure optimal results, the following support (secondary) reagents are recommended: 1) Western Blotting: use donkey anti-goat IgG-HRP: sc-2020 (dilution range: 1:2000-1:100,000) or Cruz Marker™ compatible donkey anti-goat IgG-HRP: sc-2033 (dilution range: 1:2000-1:5000), Cruz Marker™ Molecular Weight Standards: sc-2035, TBS Blotto A Blocking Reagent: sc-2333 and Western Blotting Luminol Reagent: sc-2048. 2) Immunoprecipitation: use Protein A/G PLUS-Agarose: sc-2003 (0.5 ml agarose/2.0 ml). 3) Immunofluorescence: use donkey anti-goat IgG-FITC: sc-2024 (dilution range: 1:100-1:400) or donkey anti-goat IgG-TR: sc-2783 (dilution range: 1:100-1:400) with UltraCruz™ Mounting Medium: sc-24941.

## DATA



Mammaglobin A (E-17): sc-48330. Western blot analysis of Mammaglobin A expression in human breast tissue extract.

## PROTOCOLS

See our web site at [www.scbt.com](http://www.scbt.com) or our catalog for detailed protocols and support products.

**MONOS**  
Satisfaction  
Guaranteed

Try **Mammaglobin A (F-5): sc-515195** or **Mammaglobin A (D-7): sc-398405**, our highly recommended monoclonal alternatives to Mammaglobin A (E-17).