

# ALS2CL (C-15): sc-48445

## BACKGROUND

Mutations in the ALS2 gene result in a number of juvenile recessive motor neuron diseases (MNDs), including juvenile primary lateral sclerosis (JPLS), a recessive form of amyotrophic lateral sclerosis (ALS2), infantile onset ascending hereditary spastic paralysis (IAHSP) and a form of complicated hereditary spastic paraplegia (cHSP). The ALS2 gene encodes the alsin protein. Alsin acts as a guanine nucleotide exchange factor for Rab5, a modulator of the endocytic pathway. Alsin is a cytosolic protein, which is associated with small, punctate membrane structures. Therefore alsin may mediate membrane transport events, potentially linking endocytic processes and actin cytoskeleton remodeling. The ALS2 C-terminal-like protein (ALS2CL) also modulates Rab5 activity.

## REFERENCES

1. Yang, Y., Hentati, A., Deng, H.X., Dabbagh, O., Sasaki, T., Hirano, M., Hung, W.Y., Ouahchi, K., Yan, J., Azim, A.C., Cole, N., Gascon, G., Yagmour, A., Ben-Hamida, M., Pericak-Vance, M., Hentati, F. and Siddique, T. 2001. The gene encoding alsin, a protein with three guanine nucleotide exchange factor domains, is mutated in a form of recessive amyotrophic lateral sclerosis. *Nat. Genet.* 29: 160-165.
2. Topp, J.D., Gray, N.W., Gerard, R.D. and Horzodovsky, B.F. 2004. Alsin is a Rab5 and Rac1 guanine nucleotide exchange factor. *J. Biol. Chem.* 279: 24612-24623.
3. Hadano, S., Otomo, A., Suzuki-Utsunomiya, K., Kunita, R., Yanagisawa, Y., Showguchi-Miyata, J., Mizumura, H. and Ikeda, J.E. 2004. ALS2CL, the novel protein highly homologous to the carboxy-terminal half of ALS2, binds to Rab5 and modulates endosome dynamics. *FEBS Lett.* 575: 64-70.
4. Devon, R.S., Schwab, C., Topp, J.D., Orban, P.C., Yang, Y.Z., Pape, T.D., Helm, J.R., Davidson, T.L., Rogers, D.A., Gros-Louis, F., Rouleau, G., Horzodovsky, B.F., Leavitt, B.R. and Hayden, M.R. 2005. Cross-species characterization of the ALS2 gene and analysis of its pattern of expression in development and adulthood. *Neurobiol. Dis.* 18: 243-257.
5. Panzeri, C., De Palma, C., Martinuzzi, A., Daga, A., De Polo, G., Bresolin, N., Miller, C.C., Tudor, E.L., Clementi, E. and Bassi, M.T. 2006. The first ALS2 missense mutation associated with JPLS reveals new aspects of alsin biological function. *Brain* 129: 1710-1719.

## CHROMOSOMAL LOCATION

Genetic locus: ALS2CL (human) mapping to 3p21.31; Als2cl (mouse) mapping to 9 F3.

## SOURCE

ALS2CL (C-15) is an affinity purified goat polyclonal antibody raised against a peptide mapping near the C-terminus of ALS2CL of human origin.

## PRODUCT

Each vial contains 200 µg IgG in 1.0 ml of PBS with < 0.1% sodium azide and 0.1% gelatin.

Blocking peptide available for competition studies, sc-48445 P, (100 µg peptide in 0.5 ml PBS containing < 0.1% sodium azide and 0.2% BSA).

## APPLICATIONS

ALS2CL (C-15) is recommended for detection of ALS2CL of mouse and human origin by Western Blotting (starting dilution 1:200, dilution range 1:100-1:1000), immunofluorescence (starting dilution 1:50, dilution range 1:50-1:500), immunohistochemistry (including paraffin-embedded sections) (starting dilution 1:50, dilution range 1:50-1:500) and solid phase ELISA (starting dilution 1:30, dilution range 1:30-1:3000).

ALS2CL (C-15) is also recommended for detection of ALS2CL in additional species, including equine, canine and porcine.

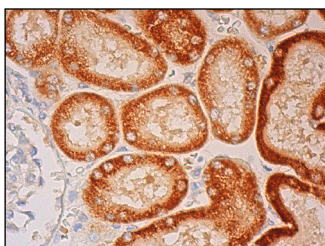
Suitable for use as control antibody for ALS2CL siRNA (h): sc-60156, ALS2CL siRNA (m): sc-60157, ALS2CL shRNA Plasmid (h): sc-60156-SH, ALS2CL shRNA Plasmid (m): sc-60157-SH, ALS2CL shRNA (h) Lentiviral Particles: sc-60156-V and ALS2CL shRNA (m) Lentiviral Particles: sc-60157-V.

Molecular Weight of ALS2CL: 108 kDa.

## RECOMMENDED SECONDARY REAGENTS

To ensure optimal results, the following support (secondary) reagents are recommended: 1) Western Blotting: use donkey anti-goat IgG-HRP: sc-2020 (dilution range: 1:2000-1:100,000) or Cruz Marker™ compatible donkey anti-goat IgG-HRP: sc-2033 (dilution range: 1:2000-1:5000), Cruz Marker™ Molecular Weight Standards: sc-2035, TBS Blotto A Blocking Reagent: sc-2333 and Western Blotting Luminol Reagent: sc-2048. 2) Immunofluorescence: use donkey anti-goat IgG-FITC: sc-2024 (dilution range: 1:100-1:400) or donkey anti-goat IgG-TR: sc-2783 (dilution range: 1:100-1:400) with UltraCruz™ Mounting Medium: sc-24941. 3) Immunohistochemistry: use ImmunoCruz™: sc-2053 or ABC: sc-2023 goat IgG Staining Systems.

## DATA



ALS2CL (C-15): sc-48445. Immunoperoxidase staining of formalin fixed, paraffin-embedded human kidney tissue showing cytoplasmic staining of cells in tubules.

## STORAGE

Store at 4° C, \*\*DO NOT FREEZE\*\*. Stable for one year from the date of shipment. Non-hazardous. No MSDS required.

## RESEARCH USE

For research use only, not for use in diagnostic procedures.

## PROTOCOLS

See our web site at [www.scbt.com](http://www.scbt.com) or our catalog for detailed protocols and support products.