

# PRDM5 (N-18): sc-48656

## BACKGROUND

A cDNA of PRDM5 was isolated based upon its homology to the PR domain of PRDM2. The gene encodes an open reading frame of 630 amino acids and contains a PR domain in the NH-terminal region followed by 16 zinc finger motifs. Through radiation hybrid analysis, PRDM5 was mapped to human chromosome 4q27, a region thought to contain tumor suppressor genes for ovarian, breast, lung, liver, colon and other cancers. The gene has a CpG island promoter and is silenced in human breast, ovarian and liver cancers. Upon infection of tumor cells, a recombinant adenovirus expressing PRDM5 causes G<sub>2</sub>/M arrest and apoptosis, suggesting that inhibition of PRDM5 may be involved in carcinogenesis.

## CHROMOSOMAL LOCATION

Genetic locus: PRDM5 (human) mapping to 4q27; Prdm5 (mouse) mapping to 6 C1.

## SOURCE

PRDM5 (N-18) is an affinity purified goat polyclonal antibody raised against a peptide mapping at the N-terminus of PRDM5 of human origin.

## PRODUCT

Each vial contains 200 µg IgG in 1.0 ml of PBS with < 0.1% sodium azide and 0.1% gelatin.

Blocking peptide available for competition studies, sc-48656 P, (100 µg peptide in 0.5 ml PBS containing < 0.1% sodium azide and 0.2% BSA).

Available as TransCruz reagent for Gel Supershift and ChIP applications, sc-48656 X, 200 µg/0.1 ml.

## APPLICATIONS

PRDM5 (N-18) is recommended for detection of PRDM5 of mouse, rat and human origin by Western Blotting (starting dilution 1:200, dilution range 1:100-1:1000), immunoprecipitation [1-2 µg per 100-500 µg of total protein (1 ml of cell lysate)], immunofluorescence (starting dilution 1:50, dilution range 1:50-1:500), immunohistochemistry (including paraffin-embedded sections) (starting dilution 1:50, dilution range 1:50-1:500) and solid phase ELISA (starting dilution 1:30, dilution range 1:30-1:3000).

RDM5 (N-18) is also recommended for detection of PRDM5 in additional species, including canine, bovine, porcine and avian.

Suitable for use as control antibody for PRDM5 siRNA (h): sc-61397, PRDM5 siRNA (m): sc-61398, PRDM5 shRNA Plasmid (h): sc-61397-SH, PRDM5 shRNA Plasmid (m): sc-61398-SH, PRDM5 shRNA (h) Lentiviral Particles: sc-61397-V and PRDM5 shRNA (m) Lentiviral Particles: sc-61398-V.

PRDM5 (N-18) X TransCruz antibody is recommended for Gel Supershift and ChIP applications.

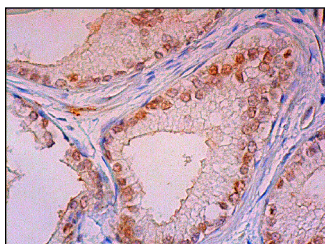
Molecular Weight of PRDM5: 70 kDa.

Positive Controls: NIH/3T3 nuclear extract: sc-2138, SW480 cell lysate: sc-2219 or HL-60 whole cell lysate: sc-2209.

## RECOMMENDED SECONDARY REAGENTS

To ensure optimal results, the following support (secondary) reagents are recommended: 1) Western Blotting: use donkey anti-goat IgG-HRP: sc-2020 (dilution range: 1:2000-1:100,000) or Cruz Marker™ compatible donkey anti-goat IgG-HRP: sc-2033 (dilution range: 1:2000-1:5000), Cruz Marker™ Molecular Weight Standards: sc-2035, TBS Blotto A Blocking Reagent: sc-2333 and Western Blotting Luminol Reagent: sc-2048. 2) Immunoprecipitation: use Protein A/G PLUS-Agarose: sc-2003 (0.5 ml agarose/2.0 ml). 3) Immunofluorescence: use donkey anti-goat IgG-FITC: sc-2024 (dilution range: 1:100-1:400) or donkey anti-goat IgG-TR: sc-2783 (dilution range: 1:100-1:400) with UltraCruz™ Mounting Medium: sc-24941. 4) Immunohistochemistry: use ImmunoCruz™: sc-2053 or ABC: sc-2023 goat IgG Staining Systems.

## DATA



PRDM5 (N-18): sc-48656. Immunoperoxidase staining of formalin fixed, paraffin-embedded human prostate tissue showing nuclear staining of glandular cells.

## STORAGE

Store at 4° C, \*\*DO NOT FREEZE\*\*. Stable for one year from the date of shipment. Non-hazardous. No MSDS required.

## RESEARCH USE

For research use only, not for use in diagnostic procedures.

## PROTOCOLS

See our web site at [www.scbt.com](http://www.scbt.com) or our catalog for detailed protocols and support products.

**MONOS**  
Satisfaction  
Guaranteed

Try **PRDM5 (A-12): sc-376277**, our highly recommended monoclonal alternative to PRDM5 (N-18).