

syntenin-1 (H-48): sc-48742

BACKGROUND

Syntenin-1 (also known as syntenin, syndecan binding protein, melanoma differentiation-associated protein 9 or proTGF α cytoplasmic domain-interacting protein 18) is a protein that binds to the cytoplasmic domains of the syndecans in yeast 2-hybrid screens and other assays. Syntenin-1 contains a tandem repeat of PDZ domains that reacts with the FYA (phe-tyr-ala) carboxy-terminal amino acid sequence of the syndecans. It may function as an adaptor that couples syndecans to cytoskeletal proteins or cytosolic downstream signal-effectors. Syntenin-1 co-localizes and interacts specifically with immature, intracellular forms of proTGF α . It is a human γ interferon responsive protein. Syntenin-1 contains PSD-95/Discs large/zO-1 (PDZ) domains and associates with the cytoplasmic tail of the IL-5R α . It directly associates with the transcription factor Sox4. The PDZ proteins PICK1, GRIP, ABP and syntenin-1 bind multiple glutamate receptor subtypes.

CHROMOSOMAL LOCATION

Genetic locus: SDCBP (human) mapping to 8q12.1; Sdcbp (mouse) mapping to 4 A1.

SOURCE

syntenin-1 (H-48) is a rabbit polyclonal antibody raised against amino acids 251-298 mapping at the C-terminus of syntenin-1 of human origin.

PRODUCT

Each vial contains 200 μ g IgG in 1.0 ml of PBS with < 0.1% sodium azide and 0.1% gelatin.

STORAGE

Store at 4° C, ****DO NOT FREEZE****. Stable for one year from the date of shipment. Non-hazardous. No MSDS required.

RESEARCH USE

For research use only, not for use in diagnostic procedures.

APPLICATIONS

syntenin-1 (H-48) is recommended for detection of syntenin-1 of mouse, rat and human origin by Western Blotting (starting dilution 1:200, dilution range 1:100-1:1000), immunoprecipitation [1-2 μ g per 100-500 μ g of total protein (1 ml of cell lysate)], immunofluorescence (starting dilution 1:50, dilution range 1:50-1:500), immunohistochemistry (including paraffin-embedded sections) (starting dilution 1:50, dilution range 1:50-1:500) and solid phase ELISA (starting dilution 1:30, dilution range 1:30-1:3000).

Suitable for use as control antibody for syntenin-1 siRNA (h): sc-42164, syntenin-1 siRNA (m): sc-42165, syntenin-1 shRNA Plasmid (h): sc-42164-SH, syntenin-1 shRNA Plasmid (m): sc-42165-SH, syntenin-1 shRNA (h) Lentiviral Particles: sc-42164-V and syntenin-1 shRNA (m) Lentiviral Particles: sc-42165-V.

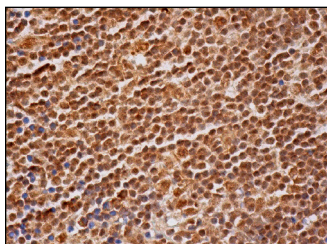
Molecular Weight of syntenin: 33 kDa.

Positive Controls: MCF7 whole cell lysate: sc-2206.

RECOMMENDED SECONDARY REAGENTS

To ensure optimal results, the following support (secondary) reagents are recommended: 1) Western Blotting: use goat anti-rabbit IgG-HRP: sc-2004 (dilution range: 1:2000-1:100,000) or Cruz Marker™ compatible goat anti-rabbit IgG-HRP: sc-2030 (dilution range: 1:2000-1:5000), Cruz Marker™ Molecular Weight Standards: sc-2035, TBS Blotto A Blocking Reagent: sc-2333 and Western Blotting Luminol Reagent: sc-2048. 2) Immunoprecipitation: use Protein A/G PLUS-Agarose: sc-2003 (0.5 ml agarose/2.0 ml). 3) Immunofluorescence: use goat anti-rabbit IgG-FITC: sc-2012 (dilution range: 1:100-1:400) or goat anti-rabbit IgG-TR: sc-2780 (dilution range: 1:100-1:400) with UltraCruz™ Mounting Medium: sc-24941. 4) Immunohistochemistry: use ImmunoCruz™: sc-2051 or ABC: sc-2018 rabbit IgG Staining Systems.

DATA



syntenin-1 (H-48): sc-48742. Immunoperoxidase staining of formalin fixed, paraffin-embedded human lymph node tissue showing nuclear and cytoplasmic staining of cells in germinal and non-germinal centers.

SELECT PRODUCT CITATIONS

1. Sira, M.M., et al. 2009. A novel immunoregulatory protein in human colostrum, syntenin-1, for promoting the development of IgA-producing cells from cord blood B cells. *Int. Immunol.* 21: 1013-1023.

PROTOCOLS

See our web site at www.scbt.com or our catalog for detailed protocols and support products.

MONOS
Satisfaction
Guaranteed

Try **syntenin-1 (C-3): sc-515538** or **syntenin-1 (E-3): sc-515507**, our highly recommended monoclonal alternatives to syntenin-1 (H-48).