

TRAP150 (H-300): sc-48779

BACKGROUND

In mammalian cells, transcription is regulated in part by high molecular weight coactivating complexes that mediate signaling between transcriptional activators and initiation factors. These complexes include the thyroid hormone receptor-associated protein (TRAP) complex, which interacts with thyroid receptors (TR), vitamin D receptors and other steroid receptors to facilitate hormone-induced transcriptional activation. The TRAP complex consists of numerous proteins ranging in size, including TRAP95, TRAP100, TRAP150, TRAP220 and TRAP230, that are characterized by the presence of a nuclear receptor recognition motif which mediates the ligand-dependent binding of TRAP proteins to the nuclear receptors. TRAP220 and TRAP100 are widely expressed and most abundantly detected in skeletal muscle, heart and placenta. TRAP95, TRAP150 and TRAP230 facilitate TR-induced transcription by associating with an additional transcriptional coactivating complex SMCC (SRB and MED protein cofactor complex), which consists of various subunits that share homology with several components of the yeast transcriptional mediator complexes.

CHROMOSOMAL LOCATION

Genetic locus: THRAP3 (human) mapping to 1p34.3; Thrap3 (mouse) mapping to 4 D2.2.

SOURCE

TRAP150 (H-300) is a rabbit polyclonal antibody raised against amino acids 191-490 mapping within an internal region of TRAP150 of human origin.

PRODUCT

Each vial contains 200 µg IgG in 1.0 ml of PBS with < 0.1% sodium azide and 0.1% gelatin. Also available as TransCruz reagent for Gel Supershift and ChIP applications, sc-48779 X, 200 µg/0.1 ml.

APPLICATIONS

TRAP150 (H-300) is recommended for detection of TRAP150 of mouse, rat and human origin by Western Blotting (starting dilution 1:200, dilution range 1:100-1:1000), immunoprecipitation [1-2 µg per 100-500 µg of total protein (1 ml of cell lysate)], immunofluorescence (starting dilution 1:50, dilution range 1:50-1:500), immunohistochemistry (including paraffin-embedded sections) (starting dilution 1:50, dilution range 1:50-1:500) and solid phase ELISA (starting dilution 1:30, dilution range 1:30-1:3000).

Suitable for use as control antibody for TRAP150 siRNA (h): sc-38591, TRAP150 siRNA (m): sc-38592, TRAP150 shRNA Plasmid (h): sc-38591-SH, TRAP150 shRNA Plasmid (m): sc-38592-SH, TRAP150 shRNA (h) Lentiviral Particles: sc-38591-V and TRAP150 shRNA (m) Lentiviral Particles: sc-38592-V.

TRAP150 (H-300) X TransCruz antibody is recommended for Gel Supershift and ChIP applications.

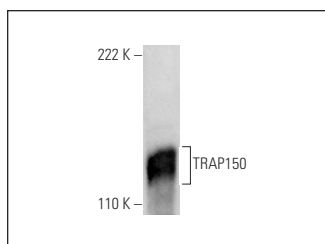
Molecular Weight of TRAP150: 150 kDa.

Positive Controls: HeLa nuclear extract: sc-2120 or K-562 nuclear extract: sc-2130.

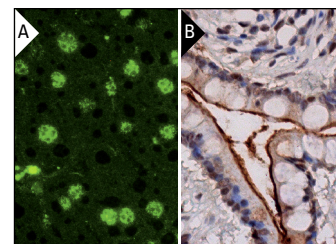
RECOMMENDED SECONDARY REAGENTS

To ensure optimal results, the following support (secondary) reagents are recommended: 1) Western Blotting: use goat anti-rabbit IgG-HRP: sc-2004 (dilution range: 1:2000-1:100,000) or Cruz Marker™ compatible goat anti-rabbit IgG-HRP: sc-2030 (dilution range: 1:2000-1:5000), Cruz Marker™ Molecular Weight Standards: sc-2035, TBS Blotto A Blocking Reagent: sc-2333 and Western Blotting Luminol Reagent: sc-2048. 2) Immunoprecipitation: use Protein A/G PLUS-Agarose: sc-2003 (0.5 ml agarose/2.0 ml). 3) Immunofluorescence: use goat anti-rabbit IgG-FITC: sc-2012 (dilution range: 1:100-1:400) or goat anti-rabbit IgG-TR: sc-2780 (dilution range: 1:100-1:400) with UltraCruz™ Mounting Medium: sc-24941. 4) Immunohistochemistry: use ImmunoCruz™: sc-2051 or ABC: sc-2018 rabbit IgG Staining Systems.

DATA



TRAP150 (H-300): sc-48779. Western blot analysis of TRAP150 expression in HeLa nuclear extract.



TRAP150 (H-300): sc-48779. Immunofluorescence staining of normal mouse liver frozen section showing nuclear staining (A). Immunoperoxidase staining of formalin fixed, paraffin-embedded human small intestine tissue showing nuclear and apical membrane staining of glandular cells (B).

STORAGE

Store at 4° C, ****DO NOT FREEZE****. Stable for one year from the date of shipment. Non-hazardous. No MSDS required.

RESEARCH USE

For research use only, not for use in diagnostic procedures.

PROTOCOLS

See our web site at www.scbt.com or our catalog for detailed protocols and support products.


 MONOS
Satisfaction
Guaranteed

Try **TRAP150 (F-10): sc-133250** or **TRAP150 (A-11): sc-133249**, our highly recommended monoclonal alternatives to TRAP150 (H-300).