

TFEB (H-125): sc-48784

BACKGROUND

The DNA-binding factor TFE3 contains adjacent helix-loop-helix (HLH) and leucine zipper (LZ) domains flanked by an upstream basic region. These protein motifs are frequently observed in other transcription factors and are particularly common to members of the Myc family. TFE3 is ubiquitously expressed and can directly associate with DNA as either a homodimer or a heterodimer formed with two related proteins, TFEB or TFEC. TFE3 binds to and activates the microE3 motif of the immunoglobulin heavy-chain enhancer to induce B cell-specific gene transcription and DNA recombination. TFEB binds to the major late promoter of adenovirus and specifically associates with DNA as both a homodimer and a heterodimer with TFE3. TFEB is expressed at low levels in the embryo but at high levels in the trophoblast cells of the placenta, where it plays a critical role in regulating normal vascularization of the placenta. TFEC shares a bHLH/LZ structure with TFE3 and a closely related protein microphthalmia-associated transcription factor (MITF), which is critically involved in melanocyte differentiation. Unlike TFE3, the expression of TFEC is largely restricted to fibroblasts, myoblasts, chondrosarcoma cells and myeloma cells.

CHROMOSOMAL LOCATION

Genetic locus: TFEB (human) mapping to 6p21.1; Tcfef (mouse) mapping to 17 C.

SOURCE

TFEB (H-125) is a rabbit polyclonal antibody raised against amino acids 326-450 mapping near the C-terminus of TFEB of human origin.

PRODUCT

Each vial contains 200 µg IgG in 1.0 ml of PBS with < 0.1% sodium azide and 0.1% gelatin. Also available as TransCruz reagent for Gel Supershift and ChIP applications, sc-48784 X, 200 µg/0.1 ml.

APPLICATIONS

TFEB (H-125) is recommended for detection of TFEB of mouse, rat and human origin by Western Blotting (starting dilution 1:200, dilution range 1:100-1:1000), immunoprecipitation [1-2 µg per 100-500 µg of total protein (1 ml of cell lysate)], immunofluorescence (starting dilution 1:50, dilution range 1:50-1:500) and solid phase ELISA (starting dilution 1:30, dilution range 1:30-1:3000).

Suitable for use as control antibody for TFEB siRNA (h): sc-38509, TFEB siRNA (m): sc-38510, TFEB shRNA Plasmid (h): sc-38509-SH, TFEB shRNA Plasmid (m): sc-38510-SH, TFEB shRNA (h) Lentiviral Particles: sc-38509-V and TFEB shRNA (m) Lentiviral Particles: sc-38510-V.

TFEB (H-125) X TransCruz antibody is recommended for Gel Supershift and ChIP applications.

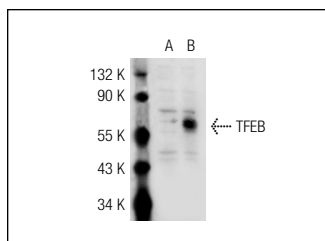
Molecular Weight of TFEB: 65 kDa.

Positive Controls: TFEB (h2): 293T Lysate: sc-114904, Jurkat whole cell lysate: sc-2204 or HeLa whole cell lysate: sc-2200.

RECOMMENDED SECONDARY REAGENTS

To ensure optimal results, the following support (secondary) reagents are recommended: 1) Western Blotting: use goat anti-rabbit IgG-HRP: sc-2004 (dilution range: 1:2000-1:100,000) or Cruz Marker™ compatible goat anti-rabbit IgG-HRP: sc-2030 (dilution range: 1:2000-1:5000), Cruz Marker™ Molecular Weight Standards: sc-2035, TBS Blotto A Blocking Reagent: sc-2333 and Western Blotting Luminol Reagent: sc-2048. 2) Immunoprecipitation: use Protein A/G PLUS-Agarose: sc-2003 (0.5 ml agarose/2.0 ml). 3) Immunofluorescence: use goat anti-rabbit IgG-FITC: sc-2012 (dilution range: 1:100-1:400) or goat anti-rabbit IgG-TR: sc-2780 (dilution range: 1:100-1:400) with UltraCruz™ Mounting Medium: sc-24941.

DATA



TFEB (H-125): sc-48784. Western blot analysis of TFEB expression in non-transfected: sc-117752 (A) and human TFEB transfected: sc-114904 (B) 293T whole cell lysates.

SELECT PRODUCT CITATIONS

- Adam, J., et al. 2011. Clear-cell papillary renal cell carcinoma: 24 cases of a distinct low-grade renal tumour and a comparative genomic hybridization array study of seven cases. *Histopathology* 58: 1064-1071.

STORAGE

Store at 4° C, ****DO NOT FREEZE****. Stable for one year from the date of shipment. Non-hazardous. No MSDS required.

RESEARCH USE

For research use only, not for use in diagnostic procedures.

PROTOCOLS

See our web site at www.scbt.com or our catalog for detailed protocols and support products.



Try **TFEB (C-6): sc-166736** or **TFEB (17): sc-101532**, our highly recommended monoclonal alternatives to TFEB (H-125).