

DNA pol ζ (H-220): sc-48814

BACKGROUND

DNA replication, recombination and repair, all of which are necessary for genomic stability, require the presence of exonucleases. In DNA replication, these enzymes are involved in the processing of okazaki fragments, whereas in DNA repair, they function to excise damaged DNA fragments and correct recombinational mismatches. These exonucleases include the family of DNA polymerases. DNA pol α , β , δ , and ϵ are involved in DNA replication and repair. DNA pol δ and DNA pol ϵ are multisubunit enzymes, with DNA pol δ consisting of two subunits—p125, which interacts with the sliding DNA clamp protein PCNA, and p50. The nuclear-encoded DNA pol γ is the only DNA polymerase required for the replication of the mitochondrial DNA. DNA pol ζ is ubiquitously expressed in various tissues and mediates the cellular mechanism of damage-induced mutagenesis. DNA pol θ is a DNA polymerase-helicase that binds ATP and is involved in the repair of interstrand crosslinks.

REFERENCES

- Bambara, R.A. and Jessee, C.B. 1991. Properties of DNA polymerases δ and ϵ , and their roles in eukaryotic DNA replication. *Biochem. Biophys. Acta* 1088: 11-24.
- Li, J.J. and Alberts, B.M. 1992. DNA replication. Eukaryotic initiation rites. *Nature* 357: 114-115.
- Ropp, P.A. and Copeland, W.C. 1996. Cloning and characterization of the human mitochondrial DNA polymerase, DNA polymerase γ . *Genomics* 36: 449-458.
- Diede, S.J. and Gottschling, D.E. 1999. Telomerase-mediated telomere addition *in vivo* requires DNA primase and DNA polymerases α and δ . *Cell* 99: 723-733
- Kolodner, R.D. and Marsischky, G.T. 1999. Eukaryotic DNA mismatch repair. *Curr. Opin. Genet. Dev.* 9: 89-96.
- Lin, W., Wu, X. and Wang, Z. 1999. A full-length cDNA of hREV3 is predicted to encode DNA polymerase ζ for damage-induced mutagenesis in humans. *Mutat. Res.* 433: 89-98.
- Sharief, F.S., Vojta, P.J., Ropp, P.A. and Copeland, W.C. 1999. Cloning and chromosomal mapping of the human DNA polymerase θ (POLQ), the eighth human DNA polymerase. *Genomics* 59: 90-96.
- Wood, R.D. 1999. DNA repair: Variants on a theme. *Nature* 399: 639-640.

CHROMOSOMAL LOCATION

Genetic locus: REV3L (human) mapping to 6q21; Rev3l (mouse) mapping to 10 B1.

SOURCE

DNA pol ζ (H-220) is a rabbit polyclonal antibody raised against amino acids 22-220 mapping near the N-terminus of DNA Pol ζ of human origin.

PRODUCT

Each vial contains 200 μ g IgG in 1.0 ml of PBS with < 0.1% sodium azide and 0.1% gelatin.

APPLICATIONS

DNA pol ζ (H-220) is recommended for detection of DNA Pol ζ of mouse, rat and human origin by Western Blotting (starting dilution 1:200, dilution range 1:100-1:1000), immunoprecipitation [1-2 μ g per 100-500 μ g of total protein (1 ml of cell lysate)], immunofluorescence (starting dilution 1:50, dilution range 1:50-1:500) and solid phase ELISA (starting dilution 1:30, dilution range 1:30-1:3000).

DNA pol ζ (H-220) is also recommended for detection of DNA Pol ζ in additional species, including canine and bovine.

Suitable for use as control antibody for DNA pol ζ siRNA (h): sc-37790, DNA pol ζ siRNA (m): sc-37791, DNA pol ζ shRNA Plasmid (h): sc-37790-SH, DNA pol ζ shRNA Plasmid (m): sc-37791-SH, DNA pol ζ shRNA (h) Lentiviral Particles: sc-37790-V AND DNA pol ζ shRNA (m) Lentiviral Particles: sc-37791-V.

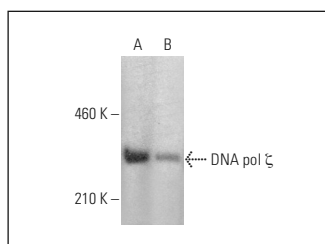
Molecular Weight of DNA pol ζ : 353 kDa.

Positive Controls: K-562 nuclear extract: sc-2130, HeLa whole cell lysate: sc-2200 or HEK293 whole cell lysate: sc-45136.

RECOMMENDED SECONDARY REAGENTS

To ensure optimal results, the following support (secondary) reagents are recommended: 1) Western Blotting: use goat anti-rabbit IgG-HRP: sc-2004 (dilution range: 1:2000-1:100,000) or Cruz Marker™ compatible goat anti-rabbit IgG-HRP: sc-2030 (dilution range: 1:2000-1:5000), Cruz Marker™ Molecular Weight Standards: sc-2035, TBS Blotto A Blocking Reagent: sc-2333 and Western Blotting Luminol Reagent: sc-2048. 2) Immunoprecipitation: use Protein A/G PLUS-Agarose: sc-2003 (0.5 ml agarose/2.0 ml). 3) Immunofluorescence: use goat anti-rabbit IgG-FITC: sc-2012 (dilution range: 1:100-1:400) or goat anti-rabbit IgG-TR: sc-2780 (dilution range: 1:100-1:400) with UltraCruz™ Mounting Medium: sc-24941.

DATA



DNA pol ζ (H-220): sc-48814. Western blot analysis of DNA pol ζ expression in HeLa (A) and HEK293 (B) whole cell lysates.

STORAGE

Store at 4° C, **DO NOT FREEZE**. Stable for one year from the date of shipment. Non-hazardous. No MSDS required.

RESEARCH USE

For research use only, not for use in diagnostic procedures.