

# MKP-4 (H-45): sc-48832

## BACKGROUND

Mitogen-activated protein (MAP) kinases are a large class of proteins involved in signal transduction pathways that are activated by a range of stimuli and mediate a number of physiological and pathological changes in the cell. Dual specificity phosphatases (DSPs) are a subclass of the protein tyrosine phosphatase (PTP) gene superfamily, which are selective for dephosphorylating critical phosphothreonine and phosphotyrosine residues within MAP kinases. DSP gene expression is induced by a host of growth factors and/or cellular stresses, thereby negatively regulating MAP kinase superfamily members, including MAPK/ERK, SAPK/JNK and p38. The members of the dual-specificity phosphatase protein family include MKP-1/CL100 (3CH134), VHR, PAC1, MKP-2, hVH-3 (B23), hVH-5, MKP-3, MKP-X and MKP-4. Human MKP-4 maps to chromosome Xq28 and encodes a 384 amino acid protein that selectively inhibits members of the ERK family of MAP kinases and is expressed only in placenta, kidney and fetal liver.

## REFERENCES

1. Keyse, S.M. 1995. An emerging family of dual specificity MAP kinase phosphatases. *Biochim. Biophys. Acta* 1265: 152-160.
2. Muda, M., et al. 1997. Molecular cloning and functional characterization of a novel mitogen-activated protein kinase phosphatase, MKP-4. *J. Biol. Chem.* 272: 5141-5151.
3. Sun, H. 1998. Functional studies of dual specificity phosphatases. *Methods Mol. Biol.* 84: 307-318.
4. Online Mendelian Inheritance in Man, OMIM™. 1998. Johns Hopkins University, Baltimore, MD. MIM Number: 300134. World Wide Web URL: <http://www.ncbi.nlm.nih.gov/omim/>
5. Camps, M., et al. 2000. Dual specificity phosphatases: a gene family for control of MAP kinase function. *FASEB J.* 14: 6-16.

## CHROMOSOMAL LOCATION

Genetic locus: DUSP9 (human) mapping to Xq28.

## SOURCE

MKP-4 (H-45) is a rabbit polyclonal antibody raised against amino acids 340-384 mapping at the C-terminus of MKP-4 of human origin.

## PRODUCT

Each vial contains 200 µg IgG in 1.0 ml of PBS with < 0.1% sodium azide and 0.1% gelatin.

## STORAGE

Store at 4° C, **\*\*DO NOT FREEZE\*\***. Stable for one year from the date of shipment. Non-hazardous. No MSDS required.

## PROTOCOLS

See our web site at [www.scbt.com](http://www.scbt.com) or our catalog for detailed protocols and support products.

## APPLICATIONS

MKP-4 (H-45) is recommended for detection of MKP-4 of human origin by Western Blotting (starting dilution 1:200, dilution range 1:100-1:1000), immunoprecipitation [1-2 µg per 100-500 µg of total protein (1 ml of cell lysate)], immunofluorescence (starting dilution 1:50, dilution range 1:50-1:500) and solid phase ELISA (starting dilution 1:30, dilution range 1:30-1:3000).

Suitable for use as control antibody for MKP-4 siRNA (h): sc-39002, MKP-4 shRNA Plasmid (h): sc-39002-SH and MKP-4 shRNA (h) Lentiviral Particles: sc-39002-V.

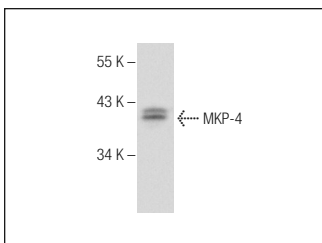
Molecular Weight of MKP-4: 42 kDa.

Positive Controls: JAR cell lysate: sc-2276, Hep G2 cell lysate: sc-2227 or HeLa whole cell lysate: sc-2200.

## RECOMMENDED SECONDARY REAGENTS

To ensure optimal results, the following support (secondary) reagents are recommended: 1) Western Blotting: use goat anti-rabbit IgG-HRP: sc-2004 (dilution range: 1:2000-1:100,000) or Cruz Marker™ compatible goat anti-rabbit IgG-HRP: sc-2030 (dilution range: 1:2000-1:5000), Cruz Marker™ Molecular Weight Standards: sc-2035, TBS Blotto A Blocking Reagent: sc-2333 and Western Blotting Luminol Reagent: sc-2048. 2) Immunoprecipitation: use Protein A/G PLUS-Agarose: sc-2003 (0.5 ml agarose/2.0 ml). 3) Immunofluorescence: use goat anti-rabbit IgG-FITC: sc-2012 (dilution range: 1:100-1:400) or goat anti-rabbit IgG-TR: sc-2780 (dilution range: 1:100-1:400) with UltraCruz™ Mounting Medium: sc-24941.

## DATA



MKP-4 (H-45): sc-48832. Western blot analysis of MKP-4 expression in JAR whole cell lysate.

## RESEARCH USE

For research use only, not for use in diagnostic procedures.

**MONOS**  
Satisfaction  
Guaranteed

Try **MKP-4 (D-3): sc-137010**, our highly recommended monoclonal alternative to MKP-4 (H-45).