

NCKX1 (E-18): sc-48892

BACKGROUND

NCKX1, also designated solute carrier family 24, member 1 (SLC24A1) or sodium/calcium/potassium exchanger 1, belongs to a family of potassium-dependent sodium/calcium exchangers. Members of this group of proteins contain two large hydrophilic loops and two sets of multiple transmembrane-spanning segments. One intron in the 5' untranslated region and 8 within the coding region of the NCKX1 gene have been identified; exon length varies from 54 to 2,037 bp. Human NCKX1 encodes a protein of 1,081 amino acids that shows 64% overall identity with the bovine protein. The two sets of presumed transmembrane domains and their short connecting loops show 94% identity with that of the cow, while the extracellular loop at the amino terminus is only 59% identical.

CHROMOSOMAL LOCATION

Genetic locus: SLC24A1 (human) mapping to 15q22.31; Slc24a1 (mouse) mapping to 9 C.

SOURCE

NCKX1 (E-18) is an affinity purified goat polyclonal antibody raised against a peptide mapping within a cytoplasmic domain of NCKX1 of human origin.

PRODUCT

Each vial contains 200 µg IgG in 1.0 ml of PBS with < 0.1% sodium azide and 0.1% gelatin.

Blocking peptide available for competition studies, sc-48892 P, (100 µg peptide in 0.5 ml PBS containing < 0.1% sodium azide and 0.2% BSA).

STORAGE

Store at 4° C, ****DO NOT FREEZE****. Stable for one year from the date of shipment. Non-hazardous. No MSDS required.

APPLICATIONS

NCKX1 (E-18) is recommended for detection of NCKX1 of mouse, rat and human origin by Western Blotting (starting dilution 1:200, dilution range 1:100-1:1000), immunoprecipitation [1-2 µg per 100-500 µg of total protein (1 ml of cell lysate)], immunofluorescence (starting dilution 1:50, dilution range 1:50-1:500) and solid phase ELISA (starting dilution 1:30, dilution range 1:30-1:3000).

NCKX1 (E-18) is also recommended for detection of NCKX1 in additional species, including equine, canine, bovine, porcine and avian.

Suitable for use as control antibody for NCKX1 siRNA (h): sc-61158, NCKX1 siRNA (m): sc-61159, NCKX1 shRNA Plasmid (h): sc-61158-SH, NCKX1 shRNA Plasmid (m): sc-61159-SH, NCKX1 shRNA (h) Lentiviral Particles: sc-61158-V and NCKX1 shRNA (m) Lentiviral Particles: sc-61159-V.

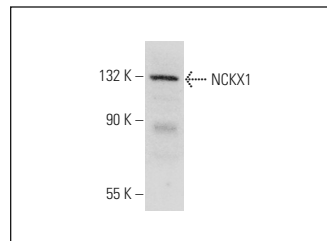
Molecular Weight of NCKX1: 130 kDa.

Positive Controls: HEK293 whole cell lysate: sc-45136 or SK-N-SH cell lysate: sc-2410.

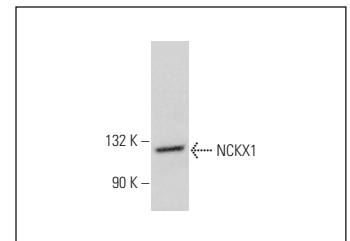
RECOMMENDED SECONDARY REAGENTS

To ensure optimal results, the following support (secondary) reagents are recommended: 1) Western Blotting: use donkey anti-goat IgG-HRP: sc-2020 (dilution range: 1:2000-1:100,000) or Cruz Marker™ compatible donkey anti-goat IgG-HRP: sc-2033 (dilution range: 1:2000-1:5000), Cruz Marker™ Molecular Weight Standards: sc-2035, TBS Blotto A Blocking Reagent: sc-2333 and Western Blotting Luminol Reagent: sc-2048. 2) Immunoprecipitation: use Protein A/G PLUS-Agarose: sc-2003 (0.5 ml agarose/2.0 ml). 3) Immunofluorescence: use donkey anti-goat IgG-FITC: sc-2024 (dilution range: 1:100-1:400) or donkey anti-goat IgG-TR: sc-2783 (dilution range: 1:100-1:400) with UltraCruz™ Mounting Medium: sc-24941.

DATA



NCKX1 (E-18): sc-48892. Western blot analysis of NCKX1 expression in HEK293 whole cell lysate.



NCKX1 (E-18): sc-48892. Western blot analysis of NCKX1 expression in SK-N-SH whole cell lysate.

RESEARCH USE

For research use only, not for use in diagnostic procedures.

PROTOCOLS

See our web site at www.scbt.com or our catalog for detailed protocols and support products.



Try **NCKX1 (E-6): sc-393400**, our highly recommended monoclonal alternative to NCKX1 (E-18).