

Cytokeratin 16 (C-12): sc-49176

BACKGROUND

Cytokeratins comprise a diverse group of intermediate filament proteins that are expressed as pairs in both keratinized and non-keratinized epithelial tissue. The Cytokeratin proteins play a critical role in differentiation, as well as tissue specialization and function, to maintain the overall structural integrity of epithelial cells. Cytokeratins are also useful markers in identifying the origin of metastatic tumors. Cytokeratin 16 is expressed in benign stratified squamous epithelium and squamous cell carcinoma of the head and neck, as well as luminal cells of mammary gland and sweat ducts. It is absent in noninvasive breast carcinomas and normal breast tissue. Mutations in the Cytokeratin 16 gene cause various diseases, including pachyonychia congenita type 1 (PC1), nonepidermolytic palmoplantar keratoderma (NEPPK) and unilateral palmoplantar verrucous nevus (UPVN).

REFERENCES

1. Wetzels, R.H., Kuijpers, H.J., Lane, E.B., Leigh, I.M., Troyanovsky, S.M., Holland, R., van Haelst, U.J. and Ramaekers, F.C. 1991. Basal cell-specific and hyperproliferation-related keratins in human breast cancer. *Am. J. Pathol.* 138: 751-763.
2. Online Mendelian Inheritance in Man, OMIM[™]. 2002. Johns Hopkins University, Baltimore, MD. MIM Number: 600962. World Wide Web URL: <http://www.ncbi.nlm.nih.gov/omim/>
3. Leon, J.E., Mata, G.M., Fregnani, E.R., Carlos-Bregni, R., de Almeida, O.P., Mosqueda-Taylor, A. and Vargas, P.A. 2005. Clinicopathological and immunohistochemical study of 39 cases of adenomatoid odontogenic tumor: a multicentric study. *Oral Oncol.* 41: 835-842.
4. Sesterhenn, A.M., Mandic, R., Dunne, A.A. and Werner, J.A. 2005. Cytokeratins 6 and 16 are frequently expressed in head and neck squamous cell carcinoma cell lines and fresh biopsies. *Anticancer Res.* 25: 2675-2680.
5. Shen, J., Chen, X.M., Wang, S.Z., Wang, L. and Xiong, S.C. 2005. Clinicopathological and immunohistochemical study of oral teratoid cyst. *Zhonghua Kou Qiang Yi Xue Za Zhi* 40: 62-66.

CHROMOSOMAL LOCATION

Genetic locus: KRT16 (human) mapping to 17q21.2.

SOURCE

Cytokeratin 16 (C-12) is an affinity purified goat polyclonal antibody raised against a peptide mapping at the C-terminus of Cytokeratin 16 of human origin.

PRODUCT

Each vial contains 200 µg IgG in 1.0 ml of PBS with < 0.1% sodium azide and 0.1% gelatin.

Blocking peptide available for competition studies, sc-49176 P, (100 µg peptide in 0.5 ml PBS containing < 0.1% sodium azide and 0.2% BSA).

RESEARCH USE

For research use only, not for use in diagnostic procedures.

APPLICATIONS

Cytokeratin 16 (C-12) is recommended for detection of Cytokeratin 16 of human origin by Western Blotting (starting dilution 1:200, dilution range 1:100-1:1000), immunoprecipitation [1-2 µg per 100-500 µg of total protein (1 ml of cell lysate)], immunofluorescence (starting dilution 1:50, dilution range 1:50-1:500) and solid phase ELISA (starting dilution 1:30, dilution range 1:30-1:3000).

Suitable for use as control antibody for Cytokeratin 16 siRNA (h): sc-60498, Cytokeratin 16 shRNA Plasmid (h): sc-60498-SH and Cytokeratin 16 shRNA (h) Lentiviral Particles: sc-60498-V.

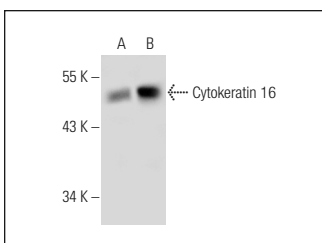
Molecular Weight of Cytokeratin 16: 48 kDa.

Positive Controls: Cytokeratin 16 (h): 293T Lysate: sc-113846 or HeLa whole cell lysate: sc-2200.

RECOMMENDED SECONDARY REAGENTS

To ensure optimal results, the following support (secondary) reagents are recommended: 1) Western Blotting: use donkey anti-goat IgG-HRP: sc-2020 (dilution range: 1:2000-1:100,000) or Cruz Marker[™] compatible donkey anti-goat IgG-HRP: sc-2033 (dilution range: 1:2000-1:5000), Cruz Marker[™] Molecular Weight Standards: sc-2035, TBS Blotto A Blocking Reagent: sc-2333 and Western Blotting Luminol Reagent: sc-2048. 2) Immunoprecipitation: use Protein A/G PLUS-Agarose: sc-2003 (0.5 ml agarose/2.0 ml). 3) Immunofluorescence: use donkey anti-goat IgG-FITC: sc-2024 (dilution range: 1:100-1:400) or donkey anti-goat IgG-TR: sc-2783 (dilution range: 1:100-1:400) with UltraCruz[™] Mounting Medium: sc-24941

DATA



Cytokeratin 16 (C-12): sc-49176. Western blot analysis of Cytokeratin 16 expression in non-transfected: sc-117752 (A) and human Cytokeratin 16 transfected: sc-113846 (B) 293T whole cell lysates.

STORAGE

Store at 4° C, **DO NOT FREEZE**. Stable for one year from the date of shipment. Non-hazardous. No MSDS required.

MONOS
Satisfaction
Guaranteed

Try **Cytokeratin 16 (E-10): sc-377224** or **Cytokeratin 16 (LL025): sc-53255**, our highly recommended monoclonal alternatives to Cytokeratin 16 (C-12).