

CLEC-1 (D-15): sc-49414

BACKGROUND

The human β -glucan protein (Dectin-1) is a small, type II transmembrane receptor that enables β -glucan dependent, nonopsonic recognition of zymosan and other yeast-derived particles by primary macrophages. Dectin-1 is the human homolog of the C-type (calcium dependent) lectin-like receptor (CLEC) family that play an important role in regulating innate immunity. CLEC-1 is a 280 amino acid single-pass type II transmembrane protein expressed in dendritic and endothelial cells. It accumulates in perinuclear compartments and requires an associated chain to reach the cell surface. CLEC-1 is involved in antigen uptake and is homologous to the natural killer (NK) cell receptors, NKG2s and CD94, that interact with major histocompatibility complex class I molecules and either inhibit or activate cytotoxicity and cytokine secretion. It has a single carbohydrate recognition domain with six conserved and two additional cysteine residues. Additionally, CLEC-1 has a cytoplasmic immunoreceptor tyrosine-based motif and many potential phosphorylation sites.

REFERENCES

- Colonna, M., et al. 2000. Molecular characterization of two novel C-type lectin-like receptors, one of which is selectively expressed in human dendritic cells. *Eur. J. Immunol.* 30: 697-704.
- Sobanov, Y., et al. 2001. A novel cluster of lectin-like receptor genes expressed in monocytic, dendritic and endothelial cells maps close to the NK receptor genes in the human NK gene complex. *Eur. J. Immunol.* 31: 3493-3503.
- Online Mendelian Inheritance in Man, OMIM[™]. 2002. Johns Hopkins University, Baltimore, MD. MIM Number: 606782. World Wide Web URL: <http://www.ncbi.nlm.nih.gov/omim/>
- Lu, Q., et al. 2005. Snake venom C-type lectins interacting with platelet receptors. Structure-function relationships and effects on haemostasis. *Toxicon* 45: 1089-1098.
- Rosen, D.B., et al. 2005. Cutting edge: lectin-like transcript-1 is a ligand for the inhibitory human NKR-P1A receptor. *J. Immunol.* 175: 7796-7799.

CHROMOSOMAL LOCATION

Genetic locus: CLEC1A (human) mapping to 12p13.2; Clec1a (mouse) mapping to 6 F3.

SOURCE

CLEC-1 (D-15) is an affinity purified goat polyclonal antibody raised against a peptide mapping near the C-terminus of CLEC-1 of mouse origin.

PRODUCT

Each vial contains 200 μ g IgG in 1.0 ml of PBS with < 0.1% sodium azide and 0.1% gelatin.

Blocking peptide available for competition studies, sc-49414 P, (100 μ g peptide in 0.5 ml PBS containing < 0.1% sodium azide and 0.2% BSA).

RESEARCH USE

For research use only, not for use in diagnostic procedures.

APPLICATIONS

CLEC-1 (D-15) is recommended for detection of CLEC-1 of mouse, rat and human origin by Western Blotting (starting dilution 1:200, dilution range 1:100-1:1000), immunoprecipitation [1-2 μ g per 100-500 μ g of total protein (1 ml of cell lysate)], immunofluorescence (starting dilution 1:50, dilution range 1:50-1:500) and solid phase ELISA (starting dilution 1:30, dilution range 1:30-1:3000).

Suitable for use as control antibody for CLEC-1 siRNA (h): sc-60396, CLEC-1 siRNA (m): sc-60397, CLEC-1 shRNA Plasmid (h): sc-60396-SH, CLEC-1 shRNA Plasmid (m): sc-60397-SH, CLEC-1 shRNA (h) Lentiviral Particles: sc-60396-V and CLEC-1 shRNA (m) Lentiviral Particles: sc-60397-V.

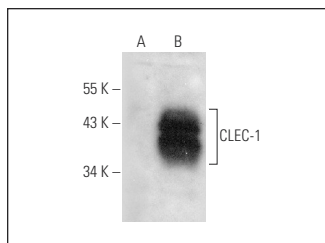
Molecular Weight of CLEC-1: 32 kDa.

Positive Controls: CLEC-1 (h2): 293T Lysate: sc-176617.

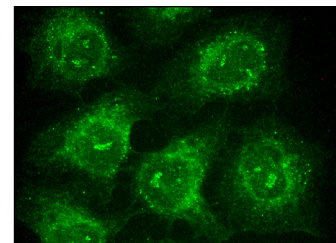
RECOMMENDED SECONDARY REAGENTS

To ensure optimal results, the following support (secondary) reagents are recommended: 1) Western Blotting: use donkey anti-goat IgG-HRP: sc-2020 (dilution range: 1:2000-1:100,000) or Cruz Marker[™] compatible donkey anti-goat IgG-HRP: sc-2033 (dilution range: 1:2000-1:5000), Cruz Marker[™] Molecular Weight Standards: sc-2035, TBS Blotto A Blocking Reagent: sc-2333 and Western Blotting Luminol Reagent: sc-2048. 2) Immunoprecipitation: use Protein A/G PLUS-Agarose: sc-2003 (0.5 ml agarose/2.0 ml). 3) Immunofluorescence: use donkey anti-goat IgG-FITC: sc-2024 (dilution range: 1:100-1:400) or donkey anti-goat IgG-TR: sc-2783 (dilution range: 1:100-1:400) with UltraCruz[™] Mounting Medium: sc-24941.

DATA



CLEC-1 (D-15): sc-49414. Western blot analysis of CLEC-1 expression in non-transfected: sc-117752 (A) and human CLEC-1 transfected: sc-176617 (B) 293T whole cell lysates.



CLEC-1 (D-15): sc-49414. Immunofluorescence staining of methanol-fixed HeLa cells showing cytoplasmic localization.

STORAGE

Store at 4° C, ****DO NOT FREEZE****. Stable for one year from the date of shipment. Non-hazardous. No MSDS required.

MONOS
Satisfaction
Guaranteed

Try **CLEC-1 (D-6): sc-393134** or **CLEC-1 (E-1): sc-390005**, our highly recommended monoclonal alternatives to CLEC-1 (D-15).