

MetAP-2 (C-15): sc-49450

BACKGROUND

Methionine aminopeptidases (MetAP), also designated peptidase M proteins, are members of the M24 family of proteins. Both MetAP-1 and MetAP-2 release N-terminal amino acids, usually methionine, from nascent peptides and arylamines. Eukaryotes contain both MetAP-1 and MetAP-2, whereas prokaryotes possess only the MetAP-1 enzyme. MetAP-1 and MetAP-2 control cell proliferation in mammalian cells. MetAP-2 is highly conserved between human and *Saccharomyces cerevisiae*. Neurofibromin (NF1) regulates MetAP-2 and increased expression of MetAP-2 correlates with several forms of cancer. Inhibitors of MetAP-2 are potential targets in cancer therapeutics, particularly in NF1-associated tumor proliferation. Chemotherapeutic drugs such as ovalicin and fumagillin bind to the active site of and inhibit MetAP-2.

CHROMOSOMAL LOCATION

Genetic locus: METAP2 (human) mapping to 12q22; Metap2 (mouse) mapping to 10 C2.

SOURCE

MetAP-2 (C-15) is an affinity purified goat polyclonal antibody raised against a peptide mapping near the C-terminus of MetAP-2 of human origin.

PRODUCT

Each vial contains 200 µg IgG in 1.0 ml of PBS with < 0.1% sodium azide and 0.1% gelatin.

Blocking peptide available for competition studies, sc-49450 P, (100 µg peptide in 0.5 ml PBS containing < 0.1% sodium azide and 0.2% BSA).

STORAGE

Store at 4° C, ****DO NOT FREEZE****. Stable for one year from the date of shipment. Non-hazardous. No MSDS required.

APPLICATIONS

MetAP-2 (C-15) is recommended for detection of MetAP-2 of mouse, rat and human origin by Western Blotting (starting dilution 1:200, dilution range 1:100-1:1000), immunoprecipitation [1-2 µg per 100-500 µg of total protein (1 ml of cell lysate)], immunofluorescence (starting dilution 1:50, dilution range 1:50-1:500) and solid phase ELISA (starting dilution 1:30, dilution range 1:30-1:3000).

MetAP-2 (C-15) is also recommended for detection of MetAP-2 in additional species, including equine, canine, bovine, porcine and avian.

Suitable for use as control antibody for MetAP-2 siRNA (h): sc-61024, MetAP-2 siRNA (m): sc-61025, MetAP-2 shRNA Plasmid (h): sc-61024-SH, MetAP-2 shRNA Plasmid (m): sc-61025-SH, MetAP-2 shRNA (h) Lentiviral Particles: sc-61024-V and MetAP-2 shRNA (m) Lentiviral Particles: sc-61025-V.

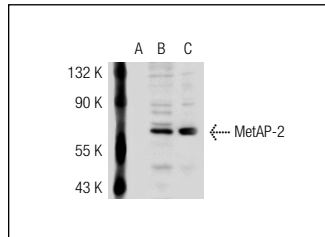
Molecular Weight of MetAP-2: 67 kDa.

Positive Controls: MetAP-2 (h): 293T Lysate: sc-113324, MetAP-2 (m): 293T Lysate: sc-121610 or HeLa whole cell lysate: sc-2200.

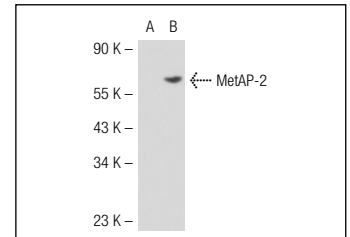
RECOMMENDED SECONDARY REAGENTS

To ensure optimal results, the following support (secondary) reagents are recommended: 1) Western Blotting: use donkey anti-goat IgG-HRP: sc-2020 (dilution range: 1:2000-1:100,000) or Cruz Marker™ compatible donkey anti-goat IgG-HRP: sc-2033 (dilution range: 1:2000-1:5000), Cruz Marker™ Molecular Weight Standards: sc-2035, TBS Blotto A Blocking Reagent: sc-2333 and Western Blotting Luminol Reagent: sc-2048. 2) Immunoprecipitation: use Protein A/G PLUS-Agarose: sc-2003 (0.5 ml agarose/2.0 ml). 3) Immunofluorescence: use donkey anti-goat IgG-FITC: sc-2024 (dilution range: 1:100-1:400) or donkey anti-goat IgG-TR: sc-2783 (dilution range: 1:100-1:400) with UltraCruz™ Mounting Medium: sc-24941.

DATA



MetAP-2 (C-15): sc-49450. Western blot analysis of MetAP-2 expression in non-transfected 293T: sc-117752 (A), human MetAP-2 transfected 293T: sc-113324 (B) and HeLa (C) whole cell lysates.



MetAP-2 (C-15): sc-49450. Western blot analysis of MetAP-2 expression in non-transfected: sc-117752 (A) and mouse MetAP-2 transfected: sc-121610 (B) 293T whole cell lysates.

RESEARCH USE

For research use only, not for use in diagnostic procedures.

PROTOCOLS

See our web site at www.scbt.com or our catalog for detailed protocols and support products.



Try **MetAP-2 (F-7): sc-365637** or **MetAP-2 (D-7): sc-166773**, our highly recommended monoclonal alternatives to MetAP-2 (C-15).